

歯科保健基礎調査集計内容

- 市町村・性別調査人数 -

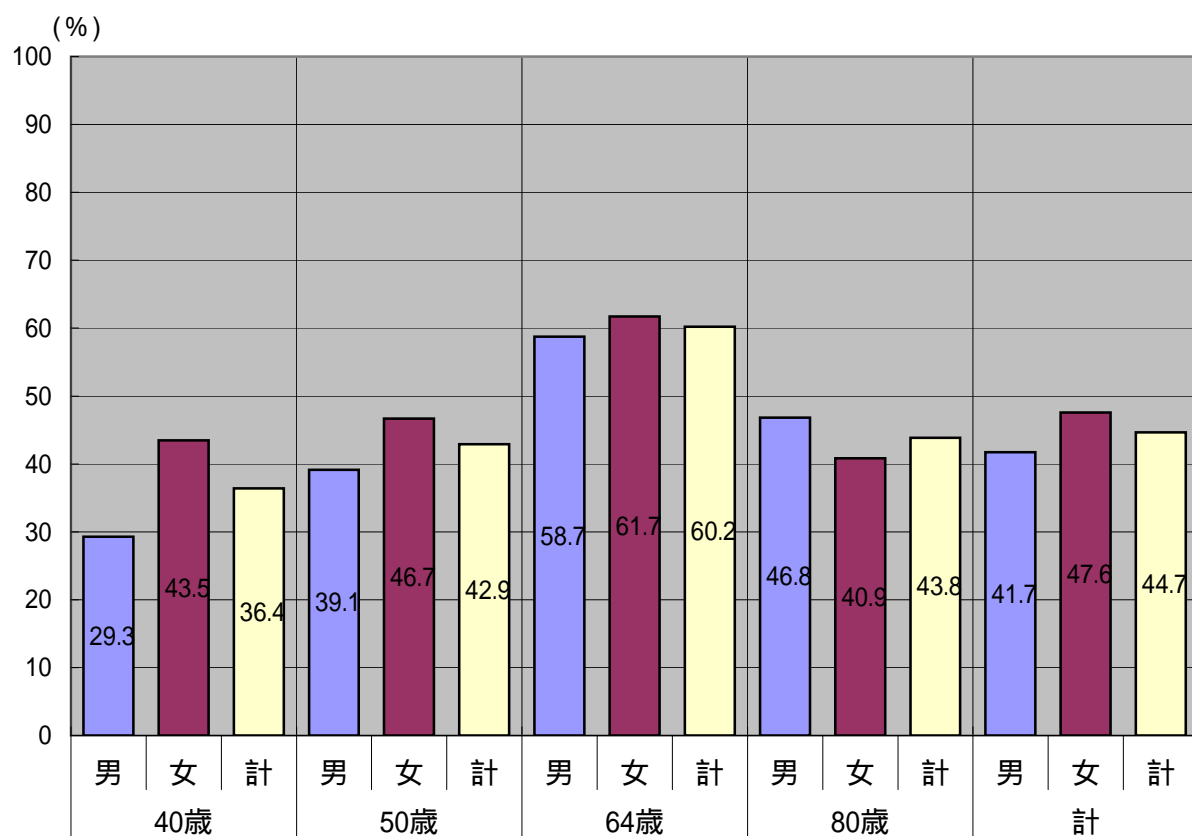
	計	男性	女性
全県	1,036人 (100.0%)	484人 (46.7%)	552人 (53.3%)
水戸医療圏			
茨城県	121人 (100.0%)	56人 (46.3%)	65人 (53.7%)
常陸太田・ひたちなか医療圏			
常陸大宮市	172人 (100.0%)	83人 (48.3%)	89人 (51.7%)
日立医療圏			
日立市	165人 (100.0%)	71人 (43.0%)	94人 (57.0%)
鹿行医療圏			
鹿嶋市	155人 (100.0%)	77人 (49.7%)	78人 (50.3%)
土浦医療圏			
土浦	142人 (100.0%)	63人 (44.4%)	79人 (55.6%)
下館・下妻医療圏			
結城市	147人 (100.0%)	73人 (49.7%)	74人 (50.3%)
古河・岩井医療圏			
坂東市	134人 (100.0%)	61人 (45.5%)	73人 (54.5%)

齒科保健基礎調査集計内容

性別・年齢別回収率

年代	性別	調査人数	回収人数	回収率(%)
40歳	男	345	101	29.3
	女	345	150	43.5
	計	690	251	36.4
50歳	男	345	135	39.1
	女	345	161	46.7
	計	690	296	42.9
64歳	男	235	138	58.7
	女	235	145	61.7
	計	470	283	60.2
80歳	男	235	110	46.8
	女	235	96	40.9
	計	470	206	43.8
計	男	1,160	484	41.7
	女	1,160	552	47.6
	計	2,320	1,036	44.7

性別・年齢別回収率



歯科保健基礎調査集計内容

[全県]

リスク低減指標基礎調査内容

問1 茨城県の歯科保健目標を知っていますか。

性別	年齢	はい	いいえ	無回答	計
男	40歳	13 (12.9%)	88 (87.1%)	0 (0.0%)	101 (100.0%)
	50歳	18 (13.3%)	115 (85.2%)	2 (1.5%)	135 (100.0%)
	64歳	28 (20.3%)	104 (75.4%)	6 (4.3%)	138 (100.0%)
	80歳	17 (15.5%)	83 (75.5%)	10 (9.1%)	110 (100.0%)
	計	76 (15.7%)	390 (80.6%)	18 (3.7%)	484 (100.0%)
女	40歳	38 (25.3%)	108 (72.0%)	4 (2.7%)	150 (100.0%)
	50歳	49 (30.4%)	104 (64.6%)	8 (5.0%)	161 (100.0%)
	64歳	34 (23.4%)	107 (73.8%)	4 (2.8%)	145 (100.0%)
	80歳	9 (9.4%)	82 (85.4%)	5 (5.2%)	96 (100.0%)
	計	130 (23.6%)	401 (72.6%)	21 (3.8%)	552 (100.0%)
計	40歳	51 (20.3%)	196 (78.1%)	4 (1.6%)	251 (100.0%)
	50歳	67 (22.6%)	219 (74.0%)	10 (3.4%)	296 (100.0%)
	64歳	62 (21.9%)	211 (74.6%)	10 (3.5%)	283 (100.0%)
	80歳	26 (12.6%)	165 (80.1%)	15 (7.3%)	206 (100.0%)
	計	206 (19.9%)	791 (76.4%)	39 (3.8%)	1,036 (100.0%)

問2 歯科医院で歯石をとってもらったり、清掃をしてもらったりすることは、むし歯や歯周病の予防効果があると思いますか。

性別	年齢	はい	いいえ	無回答	計
男	40歳	95 (94.1%)	6 (5.9%)	0 (0.0%)	101 (100.0%)
	50歳	126 (93.3%)	8 (5.9%)	1 (0.7%)	135 (100.0%)
	64歳	122 (88.4%)	13 (9.4%)	3 (2.2%)	138 (100.0%)
	80歳	87 (79.1%)	14 (12.7%)	9 (8.2%)	110 (100.0%)
	計	430 (88.8%)	41 (8.5%)	13 (2.7%)	484 (100.0%)
女	40歳	145 (96.7%)	5 (3.3%)	0 (0.0%)	150 (100.0%)
	50歳	150 (93.2%)	8 (5.0%)	3 (1.9%)	161 (100.0%)
	64歳	132 (91.0%)	9 (6.2%)	4 (2.8%)	145 (100.0%)
	80歳	85 (88.5%)	8 (8.3%)	3 (3.1%)	96 (100.0%)
	計	512 (92.8%)	30 (5.4%)	10 (1.8%)	552 (100.0%)
計	40歳	240 (95.6%)	11 (4.4%)	0 (0.0%)	251 (100.0%)
	50歳	276 (93.2%)	16 (5.4%)	4 (1.4%)	296 (100.0%)
	64歳	254 (89.8%)	22 (7.8%)	7 (2.5%)	283 (100.0%)
	80歳	172 (83.5%)	22 (10.7%)	12 (5.8%)	206 (100.0%)
	計	942 (90.9%)	71 (6.9%)	23 (2.2%)	1,036 (100.0%)

歯科保健基礎調査集計内容

[全県]

問3 フッ素添付やフッ素配合の歯みがき剤などがむし歯予防に効果があると思いますか。

性別	年齢	はい	いいえ	無回答	計
男	40歳	84 (83.2%)	17 (16.8%)	0 (0.0%)	101 (100.0%)
	50歳	108 (80.0%)	24 (17.8%)	3 (2.2%)	135 (100.0%)
	64歳	98 (71.0%)	35 (25.4%)	5 (3.6%)	138 (100.0%)
	80歳	73 (66.4%)	25 (22.7%)	12 (10.9%)	110 (100.0%)
	計	363 (75.0%)	101 (20.9%)	20 (4.1%)	484 (100.0%)
女	40歳	128 (85.3%)	21 (14.0%)	1 (0.7%)	150 (100.0%)
	50歳	126 (78.3%)	30 (18.6%)	5 (3.1%)	161 (100.0%)
	64歳	102 (70.3%)	31 (21.4%)	12 (8.3%)	145 (100.0%)
	80歳	63 (65.6%)	19 (19.8%)	14 (14.6%)	96 (100.0%)
	計	419 (75.9%)	101 (18.3%)	32 (5.8%)	552 (100.0%)
計	40歳	212 (84.5%)	38 (15.1%)	1 (0.4%)	251 (100.0%)
	50歳	234 (79.1%)	54 (18.2%)	8 (2.7%)	296 (100.0%)
	64歳	200 (70.7%)	66 (23.3%)	17 (6.0%)	283 (100.0%)
	80歳	136 (66.0%)	44 (21.4%)	26 (12.6%)	206 (100.0%)
	計	782 (75.5%)	202 (19.5%)	52 (5.0%)	1,036 (100.0%)

問4 寝る前に甘い食べ物や飲み物を飲食することがありますか。

性別	年齢	はい	いいえ	無回答	計
男	40歳	57 (56.4%)	44 (43.6%)	0 (0.0%)	101 (100.0%)
	50歳	84 (62.2%)	50 (37.0%)	1 (0.7%)	135 (100.0%)
	64歳	55 (39.9%)	81 (58.7%)	2 (1.4%)	138 (100.0%)
	80歳	36 (32.7%)	67 (60.9%)	7 (6.4%)	110 (100.0%)
	計	232 (47.9%)	242 (50.0%)	10 (2.1%)	484 (100.0%)
女	40歳	60 (40.0%)	89 (59.3%)	1 (0.7%)	150 (100.0%)
	50歳	70 (43.5%)	90 (55.9%)	1 (0.6%)	161 (100.0%)
	64歳	45 (31.0%)	99 (68.3%)	1 (0.7%)	145 (100.0%)
	80歳	19 (19.8%)	73 (76.0%)	4 (4.2%)	96 (100.0%)
	計	194 (35.1%)	351 (63.6%)	7 (1.3%)	552 (100.0%)
計	40歳	117 (46.6%)	133 (53.0%)	1 (0.4%)	251 (100.0%)
	50歳	154 (52.0%)	140 (47.3%)	2 (0.7%)	296 (100.0%)
	64歳	100 (35.3%)	180 (63.6%)	3 (1.1%)	283 (100.0%)
	80歳	55 (26.7%)	140 (68.0%)	11 (5.3%)	206 (100.0%)
	計	426 (41.1%)	593 (57.2%)	17 (1.6%)	1,036 (100.0%)

歯科保健基礎調査集計内容

[全県]

問5 糸楊枝(デンタルフロス)や歯間ブラシを使用することは歯周病の予防に効果的だと思いますか。

性別	年齢	はい	いいえ	無回答	計
男	40歳	79 (78.2%)	22 (21.8%)	0 (0.0%)	101 (100.0%)
	50歳	108 (80.0%)	21 (15.6%)	6 (4.4%)	135 (100.0%)
	64歳	98 (71.0%)	35 (25.4%)	5 (3.6%)	138 (100.0%)
	80歳	70 (63.6%)	28 (25.5%)	12 (10.9%)	110 (100.0%)
	計	355 (73.3%)	106 (21.9%)	23 (4.8%)	484 (100.0%)
女	40歳	127 (84.7%)	21 (14.0%)	2 (1.3%)	150 (100.0%)
	50歳	127 (78.9%)	29 (18.0%)	5 (3.1%)	161 (100.0%)
	64歳	111 (76.6%)	30 (20.7%)	4 (2.8%)	145 (100.0%)
	80歳	64 (66.7%)	19 (19.8%)	13 (13.5%)	96 (100.0%)
	計	429 (77.7%)	99 (17.9%)	24 (4.3%)	552 (100.0%)
計	40歳	206 (82.1%)	43 (17.1%)	2 (0.8%)	251 (100.0%)
	50歳	235 (79.4%)	50 (16.9%)	11 (3.7%)	296 (100.0%)
	64歳	209 (73.9%)	65 (23.0%)	9 (3.2%)	283 (100.0%)
	80歳	134 (65.0%)	47 (22.8%)	25 (12.1%)	206 (100.0%)
	計	784 (75.7%)	205 (19.8%)	47 (4.5%)	1,036 (100.0%)

問6 喫煙と関係のあると思う疾患に をつけてください。

性別	年齢	がん	脳卒中	心疾患	ぜんそく	気管支炎	胃潰瘍	歯周病	計
男	40歳	88 (24.9%)	51 (14.4%)	46 (13.0%)	49 (13.9%)	67 (19.0%)	16 (4.5%)	36 (10.2%)	353 (100.0%)
	50歳	111 (22.2%)	72 (14.4%)	60 (12.0%)	86 (17.2%)	99 (19.8%)	29 (5.8%)	42 (8.4%)	499 (100.0%)
	64歳	102 (22.5%)	61 (13.5%)	43 (9.5%)	91 (20.1%)	97 (21.4%)	26 (5.7%)	33 (7.3%)	453 (100.0%)
	80歳	65 (22.4%)	34 (11.7%)	28 (9.7%)	66 (22.8%)	62 (21.4%)	17 (5.9%)	18 (6.2%)	290 (100.0%)
	計	366 (22.9%)	218 (13.7%)	177 (11.1%)	292 (18.3%)	325 (20.4%)	88 (5.5%)	129 (8.1%)	1,595 (100.0%)
女	40歳	130 (22.0%)	77 (13.0%)	66 (11.1%)	106 (17.9%)	120 (20.3%)	28 (4.7%)	65 (11.0%)	592 (100.0%)
	50歳	132 (22.8%)	72 (12.4%)	67 (11.6%)	100 (17.3%)	119 (20.6%)	31 (5.4%)	58 (10.0%)	579 (100.0%)
	64歳	93 (21.6%)	47 (10.9%)	49 (11.4%)	102 (23.7%)	91 (21.2%)	20 (4.7%)	28 (6.5%)	430 (100.0%)
	80歳	68 (23.4%)	30 (10.3%)	29 (10.0%)	57 (19.6%)	62 (21.3%)	19 (6.5%)	26 (8.9%)	291 (100.0%)
	計	423 (22.4%)	226 (11.9%)	211 (11.2%)	365 (19.3%)	392 (20.7%)	98 (5.2%)	177 (9.4%)	1,892 (100.0%)
計	40歳	218 (23.1%)	128 (13.5%)	112 (11.9%)	155 (16.4%)	187 (19.8%)	44 (4.7%)	101 (10.7%)	945 (100.0%)
	50歳	243 (22.5%)	144 (13.4%)	127 (11.8%)	186 (17.3%)	218 (20.2%)	60 (5.6%)	100 (9.3%)	1,078 (100.0%)
	64歳	195 (22.1%)	108 (12.2%)	92 (10.4%)	193 (21.9%)	188 (21.3%)	46 (5.2%)	61 (6.9%)	883 (100.0%)
	80歳	133 (22.9%)	64 (11.0%)	57 (9.8%)	123 (21.2%)	124 (21.3%)	36 (6.2%)	44 (7.6%)	581 (100.0%)
	計	789 (22.6%)	444 (12.7%)	388 (11.1%)	657 (18.8%)	717 (20.6%)	186 (5.3%)	306 (8.8%)	3,487 (100.0%)

歯科保健基礎調査集計内容

[全県]

問7 歯科医師や歯科衛生士からの歯の磨き方の指導を受けましたことがありますか。

性別	年齢	はい	いいえ	無回答	計
男	40歳	67 (66.3%)	33 (32.7%)	1 (1.0%)	101 (100.0%)
	50歳	80 (59.3%)	53 (39.3%)	2 (1.5%)	135 (100.0%)
	64歳	90 (65.2%)	45 (32.6%)	3 (2.2%)	138 (100.0%)
	80歳	50 (45.5%)	53 (48.2%)	7 (6.4%)	110 (100.0%)
	計	287 (59.3%)	184 (38.0%)	13 (2.7%)	484 (100.0%)
女	40歳	116 (77.3%)	32 (21.3%)	2 (1.3%)	150 (100.0%)
	50歳	108 (67.1%)	51 (31.7%)	2 (1.2%)	161 (100.0%)
	64歳	97 (66.9%)	46 (31.7%)	2 (1.4%)	145 (100.0%)
	80歳	40 (41.7%)	52 (54.2%)	4 (4.2%)	96 (100.0%)
	計	361 (65.4%)	181 (32.8%)	10 (1.8%)	552 (100.0%)
計	40歳	183 (72.9%)	65 (25.9%)	3 (1.2%)	251 (100.0%)
	50歳	188 (63.5%)	104 (35.1%)	4 (1.4%)	296 (100.0%)
	64歳	187 (66.1%)	91 (32.2%)	5 (1.8%)	283 (100.0%)
	80歳	90 (43.7%)	105 (51.0%)	11 (5.3%)	206 (100.0%)
	計	648 (62.5%)	365 (35.2%)	23 (2.2%)	1,036 (100.0%)

問8 口の中には現在何本の歯が残っている歯の数(平均歯数)

性別	年齢	平均	人数	総本数
男	40歳	26.9	101	2,716
	50歳	25.7	133	3,419
	64歳	22.9	135	3,097
	80歳	15.7	102	1,598
	計	23.0	471	10,830
女	40歳	28.1	150	4,212
	50歳	26.3	160	4,206
	64歳	22.4	143	3,206
	80歳	9.9	83	818
	計	23.2	536	
計	40歳	27.6	251	6,928
	50歳	26.0	293	7,625
	64歳	22.7	278	6,303
	80歳	13.1	185	2,416
	計	23.1	1,007	23,272

歯科保健基礎調査集計内容

[全県]

問8 口の中には現在何本の歯が残っている歯の数(平均歯数)										
性別	年齢	3本以下	4～7本	8～11本	12～15本	16～19本	20～23本	24～27本	28本以上	計
男	40歳	2 (2.0%)	4 (4.0%)		1 (1.0%)	2 (2.0%)	3 (3.0%)	19 (18.8%)	70 (69.3%)	101 (100.0%)
	50歳	2 (1.5%)	4 (3.0%)	2 (1.5%)		3 (2.3%)	12 (9.0%)	46 (34.6%)	64 (48.1%)	133 (100.0%)
	64歳	6 (4.4%)	5 (3.7%)	4 (3.0%)	13 (9.6%)	8 (5.9%)	13 (9.6%)	30 (22.2%)	56 (41.5%)	135 (100.0%)
	80歳	19 (18.6%)	9 (8.8%)	13 (12.7%)	5 (4.9%)	14 (13.7%)	12 (11.8%)	12 (11.8%)	18 (17.6%)	102 (100.0%)
	計	29 (6.2%)	22 (4.7%)	19 (4.0%)	19 (4.0%)	27 (5.7%)	40 (8.5%)	107 (22.7%)	208 (44.2%)	471 (100.0%)
女	40歳	1 (0.7%)		1 (0.7%)		1 (0.7%)	6 (4.0%)	32 (21.3%)	109 (72.7%)	150 (100.0%)
	50歳	1 (0.6%)	1 (0.6%)		5 (3.1%)	3 (1.9%)	16 (10.0%)	54 (33.8%)	80 (50.0%)	160 (100.0%)
	64歳	4 (2.8%)	8 (5.6%)	9 (6.3%)	7 (4.9%)	10 (7.0%)	15 (10.5%)	43 (30.1%)	47 (32.9%)	143 (100.0%)
	80歳	35 (42.2%)	13 (15.7%)	5 (6.0%)	3 (3.6%)	9 (10.8%)	2 (2.4%)	7 (8.4%)	9 (10.8%)	83 (100.0%)
	計	41 (7.6%)	22 (4.1%)	15 (2.8%)	15 (2.8%)	23 (4.3%)	39 (7.3%)	136 (25.4%)	245 (45.7%)	536 (100.0%)
計	40歳	3 (1.2%)	4 (1.6%)	1 (0.4%)	1 (0.4%)	3 (1.2%)	9 (3.6%)	51 (20.3%)	179 (71.3%)	251 (100.0%)
	50歳	3 (1.0%)	5 (1.7%)	2 (0.7%)	5 (1.7%)	6 (2.0%)	28 (9.6%)	100 (34.1%)	144 (49.1%)	293 (100.0%)
	64歳	10 (3.6%)	13 (4.7%)	13 (4.7%)	20 (7.2%)	18 (6.5%)	28 (10.1%)	73 (26.3%)	103 (37.1%)	278 (100.0%)
	80歳	54 (29.2%)	22 (11.9%)	18 (9.7%)	8 (4.3%)	23 (12.4%)	14 (7.6%)	19 (10.3%)	27 (14.6%)	185 (100.0%)
	計	70 (7.0%)	44 (4.4%)	34 (3.4%)	34 (3.4%)	50 (5.0%)	79 (7.8%)	243 (24.1%)	453 (45.0%)	1,007 (100.0%)

歯科保健基礎調査集計内容

[全県]

歯周病の状況基礎調査内容

問1 歯をみがいたとき歯ぐきから血が出ることがありますか。

性別	年齢	ある	時々ある	ほとんどない	ない	無回答	計
男	40歳	14 (13.9%)	47 (46.5%)	28 (27.7%)	12 (11.9%)	(0.0%)	101 (100.0%)
	50歳	20 (14.8%)	54 (40.0%)	42 (31.1%)	19 (14.1%)	(0.0%)	135 (100.0%)
	64歳	18 (13.0%)	42 (30.4%)	31 (22.5%)	46 (33.3%)	1 (0.7%)	138 (100.0%)
	80歳	4 (3.6%)	25 (22.7%)	28 (25.5%)	47 (42.7%)	6 (5.5%)	110 (100.0%)
	計	56 (11.6%)	168 (34.7%)	129 (26.7%)	124 (25.6%)	7 (1.4%)	484 (100.0%)
女	40歳	10 (6.7%)	68 (45.3%)	42 (28.0%)	30 (20.0%)	(0.0%)	150 (100.0%)
	50歳	20 (12.4%)	68 (42.2%)	43 (26.7%)	30 (18.6%)	(0.0%)	161 (100.0%)
	64歳	18 (12.4%)	43 (29.7%)	39 (26.9%)	44 (30.3%)	1 (0.7%)	145 (100.0%)
	80歳	4 (4.2%)	7 (7.3%)	12 (12.5%)	65 (67.7%)	8 (8.3%)	96 (100.0%)
	計	52 (9.4%)	186 (33.7%)	136 (24.6%)	169 (30.6%)	9 (1.6%)	552 (100.0%)
計	40歳	24 (9.6%)	115 (45.8%)	70 (27.9%)	42 (16.7%)	0 (0.0%)	251 (100.0%)
	50歳	40 (13.5%)	122 (41.2%)	85 (28.7%)	49 (16.6%)	0 (0.0%)	296 (100.0%)
	64歳	36 (12.7%)	85 (30.0%)	70 (24.7%)	90 (31.8%)	2 (0.7%)	283 (100.0%)
	80歳	8 (3.9%)	32 (15.5%)	40 (19.4%)	112 (54.4%)	14 (6.8%)	206 (100.0%)
	計	108 (10.4%)	354 (34.2%)	265 (25.6%)	293 (28.3%)	16 (1.5%)	1,036 (100.0%)

問2 歯ぐきが腫れることがありますか。

性別	年齢	ある	時々ある	ほとんどない	ない	無回答	計
男	40歳	11 (10.9%)	32 (31.7%)	43 (42.6%)	15 (14.9%)	(0.0%)	101 (100.0%)
	50歳	18 (13.3%)	46 (34.1%)	46 (34.1%)	25 (18.5%)	(0.0%)	135 (100.0%)
	64歳	20 (14.5%)	39 (28.3%)	32 (23.2%)	46 (33.3%)	1 (0.7%)	138 (100.0%)
	80歳	10 (9.1%)	23 (20.9%)	26 (23.6%)	44 (40.0%)	7 (6.4%)	110 (100.0%)
	計	59 (12.2%)	140 (28.9%)	147 (30.4%)	130 (26.9%)	8 (1.7%)	484 (100.0%)
女	40歳	11 (7.3%)	48 (32.0%)	55 (36.7%)	36 (24.0%)	(0.0%)	150 (100.0%)
	50歳	18 (11.2%)	61 (37.9%)	51 (31.7%)	29 (18.0%)	2 (1.2%)	161 (100.0%)
	64歳	17 (11.7%)	36 (24.8%)	35 (24.1%)	53 (36.6%)	4 (2.8%)	145 (100.0%)
	80歳	12 (12.5%)	11 (11.5%)	10 (10.4%)	53 (55.2%)	10 (10.4%)	96 (100.0%)
	計	58 (10.5%)	156 (28.3%)	151 (27.4%)	171 (31.0%)	16 (2.9%)	552 (100.0%)
計	40歳	22 (8.8%)	80 (31.9%)	98 (39.0%)	51 (20.3%)	0 (0.0%)	251 (100.0%)
	50歳	36 (12.2%)	107 (36.1%)	97 (32.8%)	54 (18.2%)	2 (0.7%)	296 (100.0%)
	64歳	37 (13.1%)	75 (26.5%)	67 (23.7%)	99 (35.0%)	5 (1.8%)	283 (100.0%)
	80歳	22 (10.7%)	34 (16.5%)	36 (17.5%)	97 (47.1%)	17 (8.3%)	206 (100.0%)
	計	117 (11.3%)	296 (28.6%)	298 (28.8%)	301 (29.1%)	24 (2.3%)	1,036 (100.0%)

歯科保健基礎調査集計内容

[全県]

問3 歯ぐきの色は、赤または赤紫色をしていますか。

性別	年齢	している	少している	ほとんどしていない	していない	無回答	計
男	40歳	29 (28.7%)	29 (28.7%)	30 (29.7%)	11 (10.9%)	2 (2.0%)	101 (100.0%)
	50歳	42 (31.1%)	43 (31.9%)	24 (17.8%)	23 (17.0%)	3 (2.2%)	135 (100.0%)
	64歳	36 (26.1%)	40 (29.0%)	21 (15.2%)	37 (26.8%)	4 (2.9%)	138 (100.0%)
	80歳	31 (28.2%)	19 (17.3%)	13 (11.8%)	37 (33.6%)	10 (9.1%)	110 (100.0%)
	計	138 (28.5%)	131 (27.1%)	88 (18.2%)	108 (22.3%)	19 (3.9%)	484 (100.0%)
女	40歳	30 (20.0%)	39 (26.0%)	33 (22.0%)	44 (29.3%)	4 (2.7%)	150 (100.0%)
	50歳	36 (22.4%)	32 (19.9%)	41 (25.5%)	45 (28.0%)	7 (4.3%)	161 (100.0%)
	64歳	24 (16.6%)	30 (20.7%)	25 (17.2%)	59 (40.7%)	7 (4.8%)	145 (100.0%)
	80歳	20 (20.8%)	11 (11.5%)	15 (15.6%)	38 (39.6%)	12 (12.5%)	96 (100.0%)
	計	110 (19.9%)	112 (20.3%)	114 (20.7%)	186 (33.7%)	30 (5.4%)	552 (100.0%)
計	40歳	59 (23.5%)	68 (27.1%)	63 (25.1%)	55 (21.9%)	6 (2.4%)	251 (100.0%)
	50歳	78 (26.4%)	75 (25.3%)	65 (22.0%)	68 (23.0%)	10 (3.4%)	296 (100.0%)
	64歳	60 (21.2%)	70 (24.7%)	46 (16.3%)	96 (33.9%)	11 (3.9%)	283 (100.0%)
	80歳	51 (24.8%)	30 (14.6%)	28 (13.6%)	75 (36.4%)	22 (10.7%)	206 (100.0%)
	計	248 (23.9%)	243 (23.5%)	202 (19.5%)	294 (28.4%)	49 (4.7%)	1,036 (100.0%)

問4 歯ぐきがブヨブヨとやわらかくなっていますか。

性別	年齢	なっている	少しなっている	ほとんどなっていない	なっていない	無回答	計
男	40歳	1 (1.0%)	12 (11.9%)	41 (40.6%)	46 (45.5%)	1 (1.0%)	101 (100.0%)
	50歳	2 (1.5%)	24 (17.8%)	52 (38.5%)	56 (41.5%)	1 (0.7%)	135 (100.0%)
	64歳	6 (4.3%)	24 (17.4%)	36 (26.1%)	69 (50.0%)	3 (2.2%)	138 (100.0%)
	80歳	2 (1.8%)	12 (10.9%)	24 (21.8%)	64 (58.2%)	8 (7.3%)	110 (100.0%)
	計	11 (2.3%)	72 (14.9%)	153 (31.6%)	235 (48.6%)	13 (2.7%)	484 (100.0%)
女	40歳	1 (0.7%)	17 (11.3%)	51 (34.0%)	80 (53.3%)	1 (0.7%)	150 (100.0%)
	50歳	3 (1.9%)	31 (19.3%)	57 (35.4%)	68 (42.2%)	2 (1.2%)	161 (100.0%)
	64歳	4 (2.8%)	24 (16.6%)	31 (21.4%)	82 (56.6%)	4 (2.8%)	145 (100.0%)
	80歳	2 (2.1%)	5 (5.2%)	15 (15.6%)	64 (66.7%)	10 (10.4%)	96 (100.0%)
	計	10 (1.8%)	77 (13.9%)	154 (27.9%)	294 (53.3%)	17 (3.1%)	552 (100.0%)
計	40歳	2 (0.8%)	29 (11.6%)	92 (36.7%)	126 (50.2%)	2 (0.8%)	251 (100.0%)
	50歳	5 (1.7%)	55 (18.6%)	109 (36.8%)	124 (41.9%)	3 (1.0%)	296 (100.0%)
	64歳	10 (3.5%)	48 (17.0%)	67 (23.7%)	151 (53.4%)	7 (2.5%)	283 (100.0%)
	80歳	4 (1.9%)	17 (8.3%)	39 (18.9%)	128 (62.1%)	18 (8.7%)	206 (100.0%)
	計	21 (2.0%)	149 (14.4%)	307 (29.6%)	529 (51.1%)	30 (2.9%)	1,036 (100.0%)

歯科保健基礎調査集計内容

[全県]

問5 口臭がありますか。

性別	年齢	ある	時々ある	ほとんどない	ない	無回答	計
男	40歳	12 (11.9%)	45 (44.6%)	35 (34.7%)	9 (8.9%)	0 (0.0%)	101 (100.0%)
	50歳	18 (13.3%)	62 (45.9%)	43 (31.9%)	10 (7.4%)	2 (1.5%)	135 (100.0%)
	64歳	13 (9.4%)	50 (36.2%)	36 (26.1%)	37 (26.8%)	2 (1.4%)	138 (100.0%)
	80歳	11 (10.0%)	24 (21.8%)	16 (14.5%)	51 (46.4%)	8 (7.3%)	110 (100.0%)
	計	54 (11.2%)	181 (37.4%)	130 (26.9%)	107 (22.1%)	12 (2.5%)	484 (100.0%)
女	40歳	6 (4.0%)	75 (50.0%)	47 (31.3%)	19 (12.7%)	3 (2.0%)	150 (100.0%)
	50歳	15 (9.3%)	75 (46.6%)	48 (29.8%)	21 (13.0%)	2 (1.2%)	161 (100.0%)
	64歳	7 (4.8%)	51 (35.2%)	47 (32.4%)	39 (26.9%)	1 (0.7%)	145 (100.0%)
	80歳	8 (8.3%)	14 (14.6%)	16 (16.7%)	47 (49.0%)	11 (11.5%)	96 (100.0%)
	計	36 (6.5%)	215 (38.9%)	158 (28.6%)	126 (22.8%)	17 (3.1%)	552 (100.0%)
計	40歳	18 (7.2%)	120 (47.8%)	82 (32.7%)	28 (11.2%)	3 (1.2%)	251 (100.0%)
	50歳	33 (11.1%)	137 (46.3%)	91 (30.7%)	31 (10.5%)	4 (1.4%)	296 (100.0%)
	64歳	20 (7.1%)	101 (35.7%)	83 (29.3%)	76 (26.9%)	3 (1.1%)	283 (100.0%)
	80歳	19 (9.2%)	38 (18.4%)	32 (15.5%)	98 (47.6%)	19 (9.2%)	206 (100.0%)
	計	90 (8.7%)	396 (38.2%)	288 (27.8%)	233 (22.5%)	29 (2.8%)	1,036 (100.0%)

問6 歯並びが気になりますか。

性別	年齢	気になる	少し気になる	ほとんど気にならない	気にならない	無回答	計
男	40歳	21 (20.8%)	32 (31.7%)	21 (20.8%)	27 (26.7%)	0 (0.0%)	101 (100.0%)
	50歳	22 (16.3%)	33 (24.4%)	44 (32.6%)	36 (26.7%)	0 (0.0%)	135 (100.0%)
	64歳	20 (14.5%)	32 (23.2%)	26 (18.8%)	56 (40.6%)	4 (2.9%)	138 (100.0%)
	80歳	5 (4.5%)	18 (16.4%)	18 (16.4%)	56 (50.9%)	13 (11.8%)	110 (100.0%)
	計	68 (14.0%)	115 (23.8%)	109 (22.5%)	175 (36.2%)	17 (3.5%)	484 (100.0%)
女	40歳	43 (28.7%)	49 (32.7%)	31 (20.7%)	27 (18.0%)	0 (0.0%)	150 (100.0%)
	50歳	34 (21.1%)	44 (27.3%)	41 (25.5%)	42 (26.1%)	0 (0.0%)	161 (100.0%)
	64歳	21 (14.5%)	35 (24.1%)	24 (16.6%)	61 (42.1%)	4 (2.8%)	145 (100.0%)
	80歳	7 (7.3%)	13 (13.5%)	6 (6.3%)	54 (56.3%)	16 (16.7%)	96 (100.0%)
	計	105 (19.0%)	141 (25.5%)	102 (18.5%)	184 (33.3%)	20 (3.6%)	552 (100.0%)
計	40歳	64 (25.5%)	81 (32.3%)	52 (20.7%)	54 (21.5%)	0 (0.0%)	251 (100.0%)
	50歳	56 (18.9%)	77 (26.0%)	85 (28.7%)	78 (26.4%)	0 (0.0%)	296 (100.0%)
	64歳	41 (14.5%)	67 (23.7%)	50 (17.7%)	117 (41.3%)	8 (2.8%)	283 (100.0%)
	80歳	12 (5.8%)	31 (15.0%)	24 (11.7%)	110 (53.4%)	29 (14.1%)	206 (100.0%)
	計	173 (16.7%)	256 (24.7%)	211 (20.4%)	359 (34.7%)	37 (3.6%)	1,036 (100.0%)

歯科保健基礎調査集計内容

[全県]

問7 歯がぐらつくことがありますか。

性別	年齢	ある	時々ある	ほとんどない	ない	無回答	計
男	40歳	9 (8.9%)	15 (14.9%)	40 (39.6%)	37 (36.6%)	(0.0%)	101 (100.0%)
	50歳	13 (9.6%)	29 (21.5%)	50 (37.0%)	42 (31.1%)	1 (0.7%)	135 (100.0%)
	64歳	27 (19.6%)	25 (18.1%)	32 (23.2%)	50 (36.2%)	4 (2.9%)	138 (100.0%)
	80歳	17 (15.5%)	22 (20.0%)	16 (14.5%)	38 (34.5%)	17 (15.5%)	110 (100.0%)
	計	66 (13.6%)	91 (18.8%)	138 (28.5%)	167 (34.5%)	22 (4.5%)	484 (100.0%)
女	40歳	9 (6.0%)	9 (6.0%)	53 (35.3%)	79 (52.7%)	(0.0%)	150 (100.0%)
	50歳	14 (8.7%)	25 (15.5%)	48 (29.8%)	73 (45.3%)	1 (0.6%)	161 (100.0%)
	64歳	19 (13.1%)	22 (15.2%)	28 (19.3%)	73 (50.3%)	3 (2.1%)	145 (100.0%)
	80歳	11 (11.5%)	6 (6.3%)	10 (10.4%)	54 (56.3%)	15 (15.6%)	96 (100.0%)
	計	53 (9.6%)	62 (11.2%)	139 (25.2%)	279 (50.5%)	19 (3.4%)	552 (100.0%)
計	40歳	18 (7.2%)	24 (9.6%)	93 (37.1%)	116 (46.2%)	0 (0.0%)	251 (100.0%)
	50歳	27 (9.1%)	54 (18.2%)	98 (33.1%)	115 (38.9%)	2 (0.7%)	296 (100.0%)
	64歳	46 (16.3%)	47 (16.6%)	60 (21.2%)	123 (43.5%)	7 (2.5%)	283 (100.0%)
	80歳	28 (13.6%)	28 (13.6%)	26 (12.6%)	92 (44.7%)	32 (15.5%)	206 (100.0%)
	計	119 (11.5%)	153 (14.8%)	277 (26.7%)	446 (43.1%)	41 (4.0%)	1,036 (100.0%)

問8 朝起きたとき、口が粘ったりすることがありますか。

性別	年齢	ある	時々ある	ほとんどない	ない	無回答	計
男	40歳	13 (12.9%)	28 (27.7%)	41 (40.6%)	18 (17.8%)	1 (1.0%)	101 (100.0%)
	50歳	15 (11.1%)	49 (36.3%)	42 (31.1%)	29 (21.5%)	(0.0%)	135 (100.0%)
	64歳	18 (13.0%)	36 (26.1%)	42 (30.4%)	40 (29.0%)	2 (1.4%)	138 (100.0%)
	80歳	17 (15.5%)	32 (29.1%)	20 (18.2%)	34 (30.9%)	7 (6.4%)	110 (100.0%)
	計	63 (13.0%)	145 (30.0%)	145 (30.0%)	121 (25.0%)	10 (2.1%)	484 (100.0%)
女	40歳	8 (5.3%)	51 (34.0%)	58 (38.7%)	33 (22.0%)	(0.0%)	150 (100.0%)
	50歳	20 (12.4%)	47 (29.2%)	61 (37.9%)	32 (19.9%)	1 (0.6%)	161 (100.0%)
	64歳	10 (6.9%)	35 (24.1%)	37 (25.5%)	61 (42.1%)	2 (1.4%)	145 (100.0%)
	80歳	12 (12.5%)	7 (7.3%)	24 (25.0%)	45 (46.9%)	8 (8.3%)	96 (100.0%)
	計	50 (9.1%)	140 (25.4%)	180 (32.6%)	171 (31.0%)	11 (2.0%)	552 (100.0%)
計	40歳	21 (8.4%)	79 (31.5%)	99 (39.4%)	51 (20.3%)	1 (0.4%)	251 (100.0%)
	50歳	35 (11.8%)	96 (32.4%)	103 (34.8%)	61 (20.6%)	1 (0.3%)	296 (100.0%)
	64歳	28 (9.9%)	71 (25.1%)	79 (27.9%)	101 (35.7%)	4 (1.4%)	283 (100.0%)
	80歳	29 (14.1%)	39 (18.9%)	44 (21.4%)	79 (38.3%)	15 (7.3%)	206 (100.0%)
	計	113 (10.9%)	285 (27.5%)	325 (31.4%)	292 (28.2%)	21 (2.0%)	1,036 (100.0%)

歯科保健基礎調査集計内容

[全県]

問9 むし歯もないのに、歯がしみることがありますか。

性別	年齢	ある	時々ある	ほとんどない	ない	無回答	計
男	40歳	13 (12.9%)	41 (40.6%)	28 (27.7%)	19 (18.8%)	0 (0.0%)	101 (100.0%)
	50歳	12 (8.9%)	50 (37.0%)	36 (26.7%)	37 (27.4%)	0 (0.0%)	135 (100.0%)
	64歳	19 (13.8%)	37 (26.8%)	26 (18.8%)	50 (36.2%)	6 (4.3%)	138 (100.0%)
	80歳	3 (2.7%)	18 (16.4%)	21 (19.1%)	57 (51.8%)	11 (10.0%)	110 (100.0%)
	計	47 (9.7%)	146 (30.2%)	111 (22.9%)	163 (33.7%)	17 (3.5%)	484 (100.0%)
女	40歳	20 (13.3%)	68 (45.3%)	31 (20.7%)	30 (20.0%)	1 (0.7%)	150 (100.0%)
	50歳	21 (13.0%)	55 (34.2%)	48 (29.8%)	34 (21.1%)	3 (1.9%)	161 (100.0%)
	64歳	19 (13.1%)	45 (31.0%)	31 (21.4%)	46 (31.7%)	4 (2.8%)	145 (100.0%)
	80歳	6 (6.3%)	8 (8.3%)	9 (9.4%)	58 (60.4%)	15 (15.6%)	96 (100.0%)
	計	66 (12.0%)	176 (31.9%)	119 (21.6%)	168 (30.4%)	23 (4.2%)	552 (100.0%)
計	40歳	33 (13.1%)	109 (43.4%)	59 (23.5%)	49 (19.5%)	1 (0.4%)	251 (100.0%)
	50歳	33 (11.1%)	105 (35.5%)	84 (28.4%)	71 (24.0%)	3 (1.0%)	296 (100.0%)
	64歳	38 (13.4%)	82 (29.0%)	57 (20.1%)	96 (33.9%)	10 (3.5%)	283 (100.0%)
	80歳	9 (4.4%)	26 (12.6%)	30 (14.6%)	115 (55.8%)	26 (12.6%)	206 (100.0%)
	計	113 (10.9%)	322 (31.1%)	230 (22.2%)	331 (31.9%)	40 (3.9%)	1,036 (100.0%)

問10 むし歯もないのに、硬い食べ物がかみにくいことがありますか。

性別	年齢	ある	時々ある	ほとんどない	ない	無回答	計
男	40歳	7 (6.9%)	21 (20.8%)	30 (29.7%)	43 (42.6%)	0 (0.0%)	101 (100.0%)
	50歳	12 (8.9%)	25 (18.5%)	53 (39.3%)	45 (33.3%)	0 (0.0%)	135 (100.0%)
	64歳	26 (18.8%)	30 (21.7%)	28 (20.3%)	47 (34.1%)	7 (5.1%)	138 (100.0%)
	80歳	16 (14.5%)	18 (16.4%)	25 (22.7%)	39 (35.5%)	12 (10.9%)	110 (100.0%)
	計	61 (12.6%)	94 (19.4%)	136 (28.1%)	174 (36.0%)	19 (3.9%)	484 (100.0%)
女	40歳	10 (6.7%)	28 (18.7%)	50 (33.3%)	62 (41.3%)	0 (0.0%)	150 (100.0%)
	50歳	21 (13.0%)	39 (24.2%)	46 (28.6%)	50 (31.1%)	5 (3.1%)	161 (100.0%)
	64歳	13 (9.0%)	33 (22.8%)	32 (22.1%)	62 (42.8%)	5 (3.4%)	145 (100.0%)
	80歳	19 (19.8%)	14 (14.6%)	11 (11.5%)	35 (36.5%)	17 (17.7%)	96 (100.0%)
	計	63 (11.4%)	114 (20.7%)	139 (25.2%)	209 (37.9%)	27 (4.9%)	552 (100.0%)
計	40歳	17 (6.8%)	49 (19.5%)	80 (31.9%)	105 (41.8%)	0 (0.0%)	251 (100.0%)
	50歳	33 (11.1%)	64 (21.6%)	99 (33.4%)	95 (32.1%)	5 (1.7%)	296 (100.0%)
	64歳	39 (13.8%)	63 (22.3%)	60 (21.2%)	109 (38.5%)	12 (4.2%)	283 (100.0%)
	80歳	35 (17.0%)	32 (15.5%)	36 (17.5%)	74 (35.9%)	29 (14.1%)	206 (100.0%)
	計	124 (12.0%)	208 (20.1%)	275 (26.5%)	383 (37.0%)	46 (4.4%)	1,036 (100.0%)

歯科保健基礎調査集計内容

[全県]

問11 歯ぐきがむずむずして不快を感じることがありますか。

性別	年齢	ある	時々ある	ほとんどない	ない	無回答	計
男	40歳	2 (2.0%)	10 (9.9%)	33 (32.7%)	56 (55.4%)	0 (0.0%)	101 (100.0%)
	50歳	5 (3.7%)	24 (17.8%)	47 (34.8%)	59 (43.7%)	0 (0.0%)	135 (100.0%)
	64歳	4 (2.9%)	25 (18.1%)	35 (25.4%)	70 (50.7%)	4 (2.9%)	138 (100.0%)
	80歳	5 (4.5%)	13 (11.8%)	23 (20.9%)	58 (52.7%)	11 (10.0%)	110 (100.0%)
	計	16 (3.3%)	72 (14.9%)	138 (28.5%)	243 (50.2%)	15 (3.1%)	484 (100.0%)
女	40歳	4 (2.7%)	21 (14.0%)	45 (30.0%)	79 (52.7%)	1 (0.7%)	150 (100.0%)
	50歳	1 (0.6%)	26 (16.1%)	56 (34.8%)	77 (47.8%)	1 (0.6%)	161 (100.0%)
	64歳	5 (3.4%)	21 (14.5%)	25 (17.2%)	90 (62.1%)	4 (2.8%)	145 (100.0%)
	80歳	3 (3.1%)	5 (5.2%)	12 (12.5%)	62 (64.6%)	14 (14.6%)	96 (100.0%)
	計	13 (2.4%)	73 (13.2%)	138 (25.0%)	308 (55.8%)	20 (3.6%)	552 (100.0%)
計	40歳	6 (2.4%)	31 (12.4%)	78 (31.1%)	135 (53.8%)	1 (0.4%)	251 (100.0%)
	50歳	6 (2.0%)	50 (16.9%)	103 (34.8%)	136 (45.9%)	1 (0.3%)	296 (100.0%)
	64歳	9 (3.2%)	46 (16.3%)	60 (21.2%)	160 (56.5%)	8 (2.8%)	283 (100.0%)
	80歳	8 (3.9%)	18 (8.7%)	35 (17.0%)	120 (58.3%)	25 (12.1%)	206 (100.0%)
	計	29 (2.8%)	145 (14.0%)	276 (26.6%)	551 (53.2%)	35 (3.4%)	1,036 (100.0%)

問12 食べ物が歯と歯の間にはさまりやすいことがありますか。

性別	年齢	ある	時々ある	ほとんどない	ない	無回答	計
男	40歳	36 (35.6%)	51 (50.5%)	9 (8.9%)	5 (5.0%)	0 (0.0%)	101 (100.0%)
	50歳	49 (36.3%)	61 (45.2%)	19 (14.1%)	6 (4.4%)	0 (0.0%)	135 (100.0%)
	64歳	64 (46.4%)	51 (37.0%)	10 (7.2%)	9 (6.5%)	4 (2.9%)	138 (100.0%)
	80歳	32 (29.1%)	39 (35.5%)	10 (9.1%)	18 (16.4%)	11 (10.0%)	110 (100.0%)
	計	181 (37.4%)	202 (41.7%)	48 (9.9%)	38 (7.9%)	15 (3.1%)	484 (100.0%)
女	40歳	47 (31.3%)	77 (51.3%)	17 (11.3%)	9 (6.0%)	0 (0.0%)	150 (100.0%)
	50歳	65 (40.4%)	77 (47.8%)	16 (9.9%)	3 (1.9%)	0 (0.0%)	161 (100.0%)
	64歳	40 (27.6%)	69 (47.6%)	16 (11.0%)	16 (11.0%)	4 (2.8%)	145 (100.0%)
	80歳	21 (21.9%)	22 (22.9%)	11 (11.5%)	30 (31.3%)	12 (12.5%)	96 (100.0%)
	計	173 (31.3%)	245 (44.4%)	60 (10.9%)	58 (10.5%)	16 (2.9%)	552 (100.0%)
計	40歳	83 (33.1%)	128 (51.0%)	26 (10.4%)	14 (5.6%)	0 (0.0%)	251 (100.0%)
	50歳	114 (38.5%)	138 (46.6%)	35 (11.8%)	9 (3.0%)	0 (0.0%)	296 (100.0%)
	64歳	104 (36.7%)	120 (42.4%)	26 (9.2%)	25 (8.8%)	8 (2.8%)	283 (100.0%)
	80歳	53 (25.7%)	61 (29.6%)	21 (10.2%)	48 (23.3%)	23 (11.2%)	206 (100.0%)
	計	354 (34.2%)	447 (43.1%)	108 (10.4%)	96 (9.3%)	31 (3.0%)	1,036 (100.0%)

歯科保健基礎調査集計内容

[全県]

問13 歯石がついていますか。

性別	年齢	ついている	少しついている	ほとんどついていない	ついていない	無回答	計
男	40歳	23 (22.8%)	45 (44.6%)	26 (25.7%)	7 (6.9%)	0 (0.0%)	101 (100.0%)
	50歳	20 (14.8%)	87 (64.4%)	21 (15.6%)	6 (4.4%)	1 (0.7%)	135 (100.0%)
	64歳	21 (15.2%)	79 (57.2%)	24 (17.4%)	11 (8.0%)	3 (2.2%)	138 (100.0%)
	80歳	9 (8.2%)	42 (38.2%)	20 (18.2%)	28 (25.5%)	11 (10.0%)	110 (100.0%)
	計	73 (15.1%)	253 (52.3%)	91 (18.8%)	52 (10.7%)	15 (3.1%)	484 (100.0%)
女	40歳	17 (11.3%)	69 (46.0%)	48 (32.0%)	16 (10.7%)	0 (0.0%)	150 (100.0%)
	50歳	22 (13.7%)	89 (55.3%)	40 (24.8%)	7 (4.3%)	3 (1.9%)	161 (100.0%)
	64歳	10 (6.9%)	69 (47.6%)	35 (24.1%)	27 (18.6%)	4 (2.8%)	145 (100.0%)
	80歳	10 (10.4%)	18 (18.8%)	14 (14.6%)	39 (40.6%)	15 (15.6%)	96 (100.0%)
	計	59 (10.7%)	245 (44.4%)	137 (24.8%)	89 (16.1%)	22 (4.0%)	552 (100.0%)
計	40歳	40 (15.9%)	114 (45.4%)	74 (29.5%)	23 (9.2%)	0 (0.0%)	251 (100.0%)
	50歳	42 (14.2%)	176 (59.5%)	61 (20.6%)	13 (4.4%)	4 (1.4%)	296 (100.0%)
	64歳	31 (11.0%)	148 (52.3%)	59 (20.8%)	38 (13.4%)	7 (2.5%)	283 (100.0%)
	80歳	19 (9.2%)	60 (29.1%)	34 (16.5%)	67 (32.5%)	26 (12.6%)	206 (100.0%)
	計	132 (12.7%)	498 (48.1%)	228 (22.0%)	141 (13.6%)	37 (3.6%)	1,036 (100.0%)

問14 歯ぐきからウミができることがありますか。

性別	年齢	ある	時々ある	ほとんどない	ない	無回答	計
男	40歳	2 (2.0%)	6 (5.9%)	29 (28.7%)	64 (63.4%)	0 (0.0%)	101 (100.0%)
	50歳	3 (2.2%)	12 (8.9%)	47 (34.8%)	73 (54.1%)	0 (0.0%)	135 (100.0%)
	64歳	3 (2.2%)	11 (8.0%)	25 (18.1%)	96 (69.6%)	3 (2.2%)	138 (100.0%)
	80歳	2 (1.8%)	6 (5.5%)	14 (12.7%)	80 (72.7%)	8 (7.3%)	110 (100.0%)
	計	10 (2.1%)	35 (7.2%)	115 (23.8%)	313 (64.7%)	11 (2.3%)	484 (100.0%)
女	40歳	3 (2.0%)	7 (4.7%)	35 (23.3%)	105 (70.0%)	0 (0.0%)	150 (100.0%)
	50歳	2 (1.2%)	9 (5.6%)	39 (24.2%)	111 (68.9%)	0 (0.0%)	161 (100.0%)
	64歳	3 (2.1%)	11 (7.6%)	22 (15.2%)	107 (73.8%)	2 (1.4%)	145 (100.0%)
	80歳	1 (1.0%)	4 (4.2%)	8 (8.3%)	75 (78.1%)	8 (8.3%)	96 (100.0%)
	計	9 (1.6%)	31 (5.6%)	104 (18.8%)	398 (72.1%)	10 (1.8%)	552 (100.0%)
計	40歳	5 (2.0%)	13 (5.2%)	64 (25.5%)	169 (67.3%)	0 (0.0%)	251 (100.0%)
	50歳	5 (1.7%)	21 (7.1%)	86 (29.1%)	184 (62.2%)	0 (0.0%)	296 (100.0%)
	64歳	6 (2.1%)	22 (7.8%)	47 (16.6%)	203 (71.7%)	5 (1.8%)	283 (100.0%)
	80歳	3 (1.5%)	10 (4.9%)	22 (10.7%)	155 (75.2%)	16 (7.8%)	206 (100.0%)
	計	19 (1.8%)	66 (6.4%)	219 (21.1%)	711 (68.6%)	21 (2.0%)	1,036 (100.0%)

歯科保健基礎調査集計内容

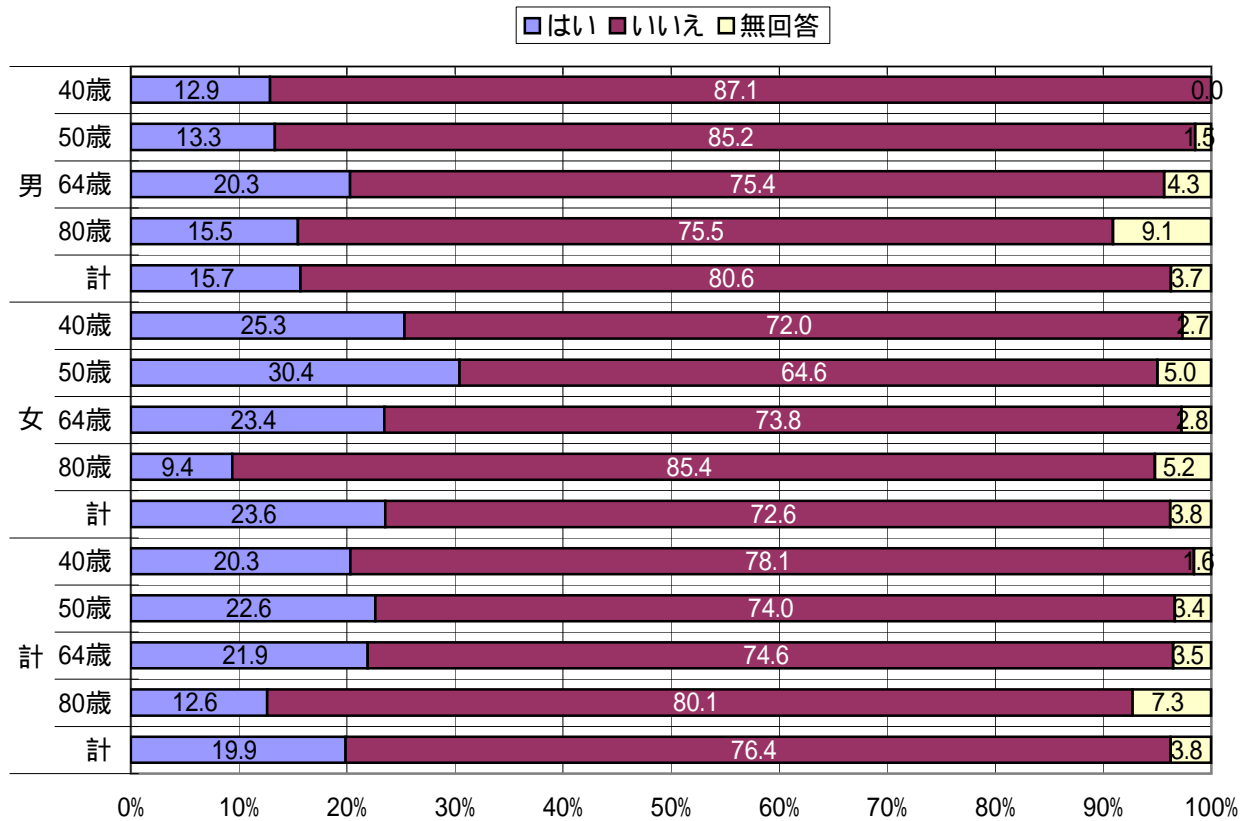
[全県]

問15 たばこを吸いますか。

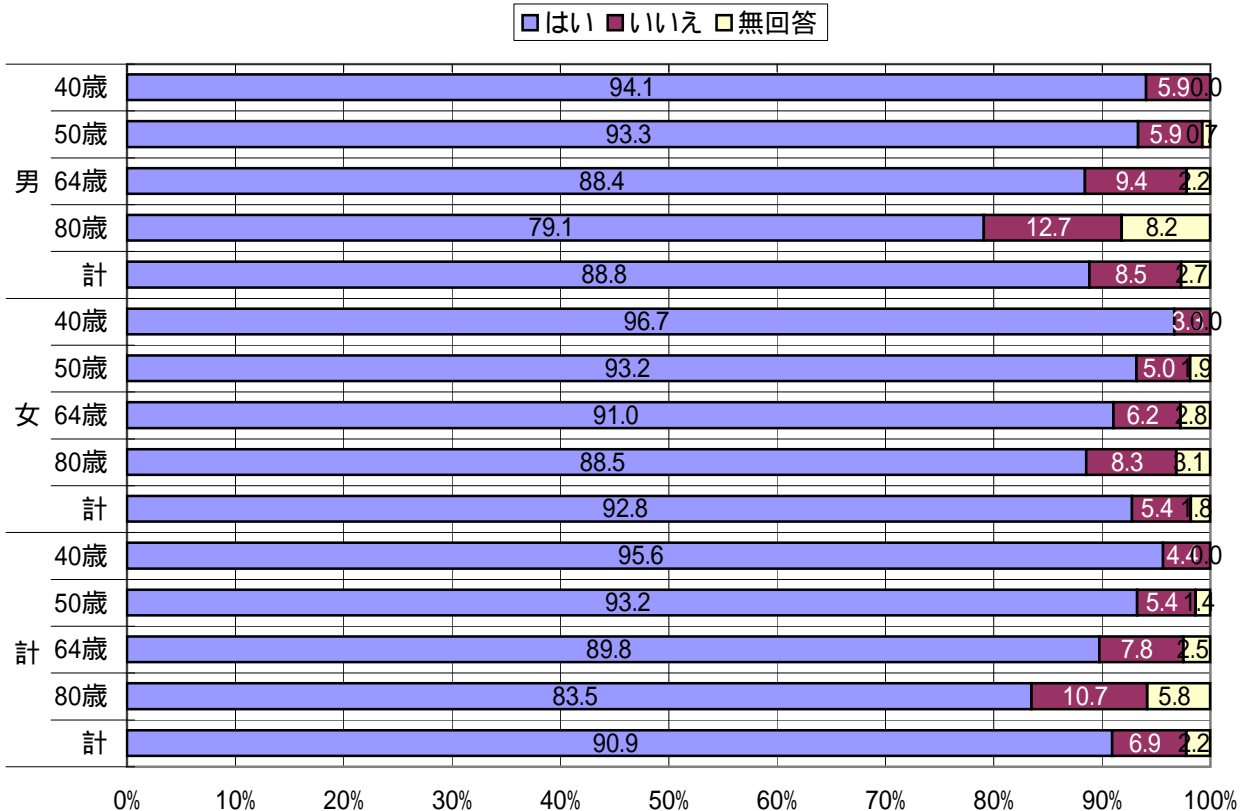
性別	年齢	吸っている	以前は吸っていた	吸ったことはない	無回答	計
男	40歳	48 (47.5%)	26 (25.7%)	27 (26.7%)	(0.0%)	101 (100.0%)
	50歳	62 (45.9%)	45 (33.3%)	28 (20.7%)	(0.0%)	135 (100.0%)
	64歳	42 (30.4%)	70 (50.7%)	25 (18.1%)	1 (0.7%)	138 (100.0%)
	80歳	26 (23.6%)	62 (56.4%)	20 (18.2%)	2 (1.8%)	110 (100.0%)
	計	178 (36.8%)	203 (41.9%)	100 (20.7%)	3 (0.6%)	484 (100.0%)
女	40歳	18 (12.0%)	10 (6.7%)	122 (81.3%)	(0.0%)	150 (100.0%)
	50歳	19 (11.8%)	8 (5.0%)	133 (82.6%)	1 (0.6%)	161 (100.0%)
	64歳	6 (4.1%)	10 (6.9%)	128 (88.3%)	1 (0.7%)	145 (100.0%)
	80歳	1 (1.0%)	3 (3.1%)	88 (91.7%)	4 (4.2%)	96 (100.0%)
	計	44 (8.0%)	31 (5.6%)	471 (85.3%)	6 (1.1%)	552 (100.0%)
計	40歳	66 (26.3%)	36 (14.3%)	149 (59.4%)	0 (0.0%)	251 (100.0%)
	50歳	81 (27.4%)	53 (17.9%)	161 (54.4%)	1 (0.3%)	296 (100.0%)
	64歳	48 (17.0%)	80 (28.3%)	153 (54.1%)	2 (0.7%)	283 (100.0%)
	80歳	27 (13.1%)	65 (31.6%)	108 (52.4%)	6 (2.9%)	206 (100.0%)
	計	222 (21.4%)	234 (22.6%)	571 (55.1%)	9 (0.9%)	1,036 (100.0%)

リスク低減指標基礎調査分集計結果

問1 茨城県の歯科保健目標を知っていますか。

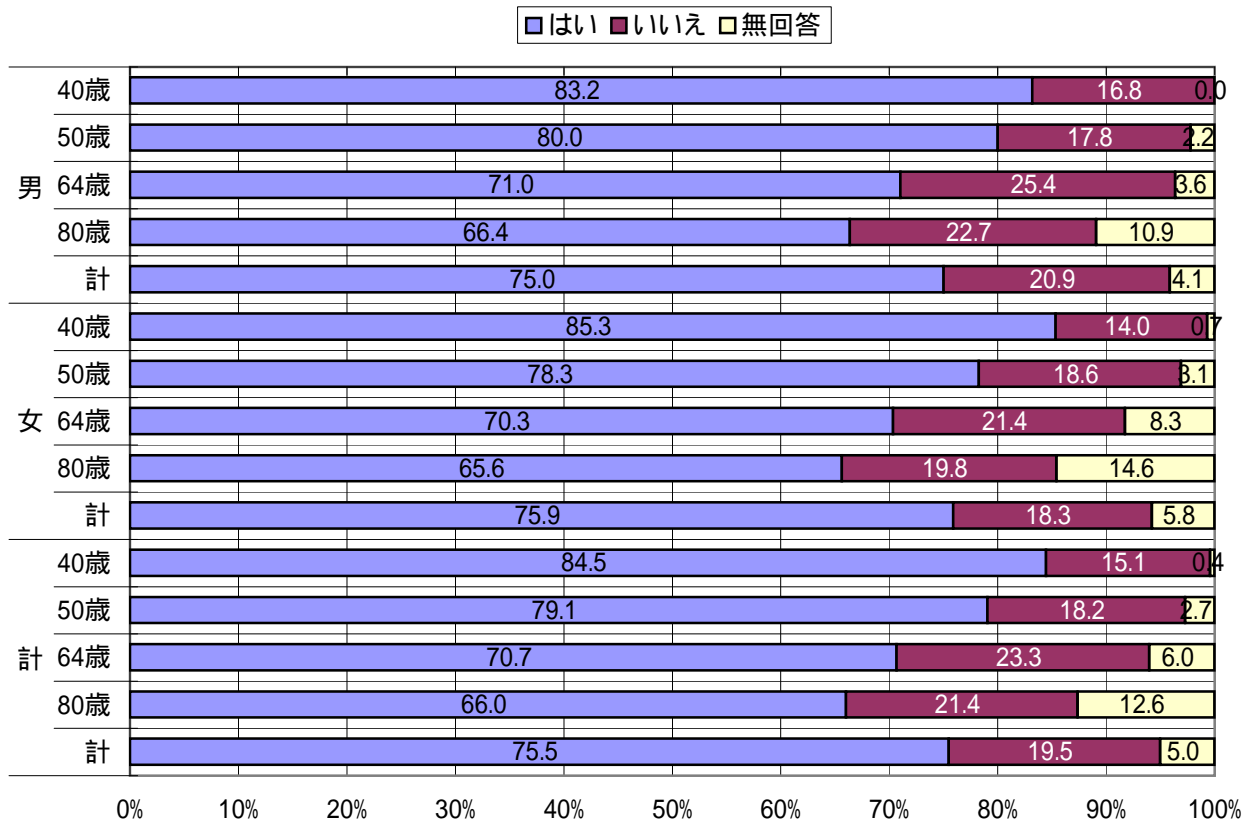


問2 歯科医院で歯石をとってもらったり、清掃をしてもらったりすることは、むし歯や歯周病の予防効果があると思いますか。

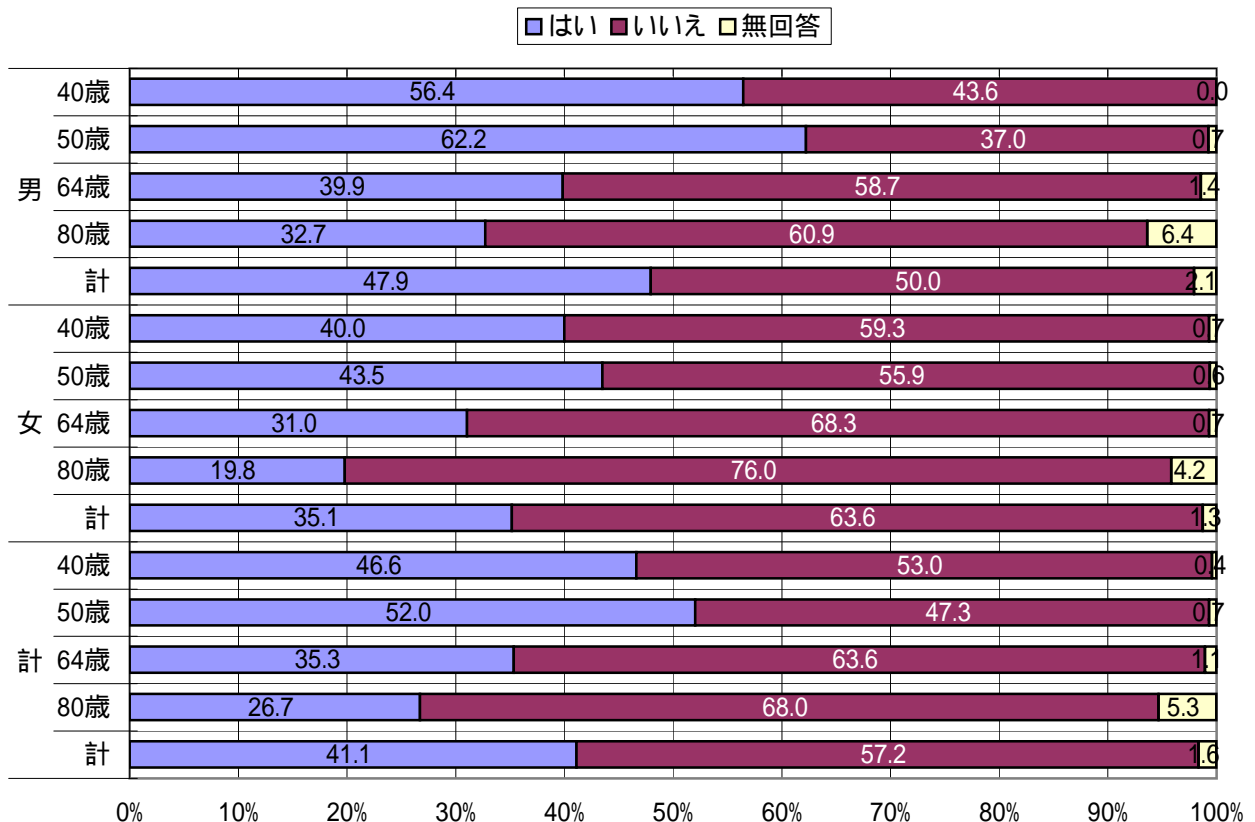


リスク低減指標基礎調査分集計結果

問3 フッ素添付やフッ素配合の歯みがき剤などがむし歯予防に効果があると思いますか。



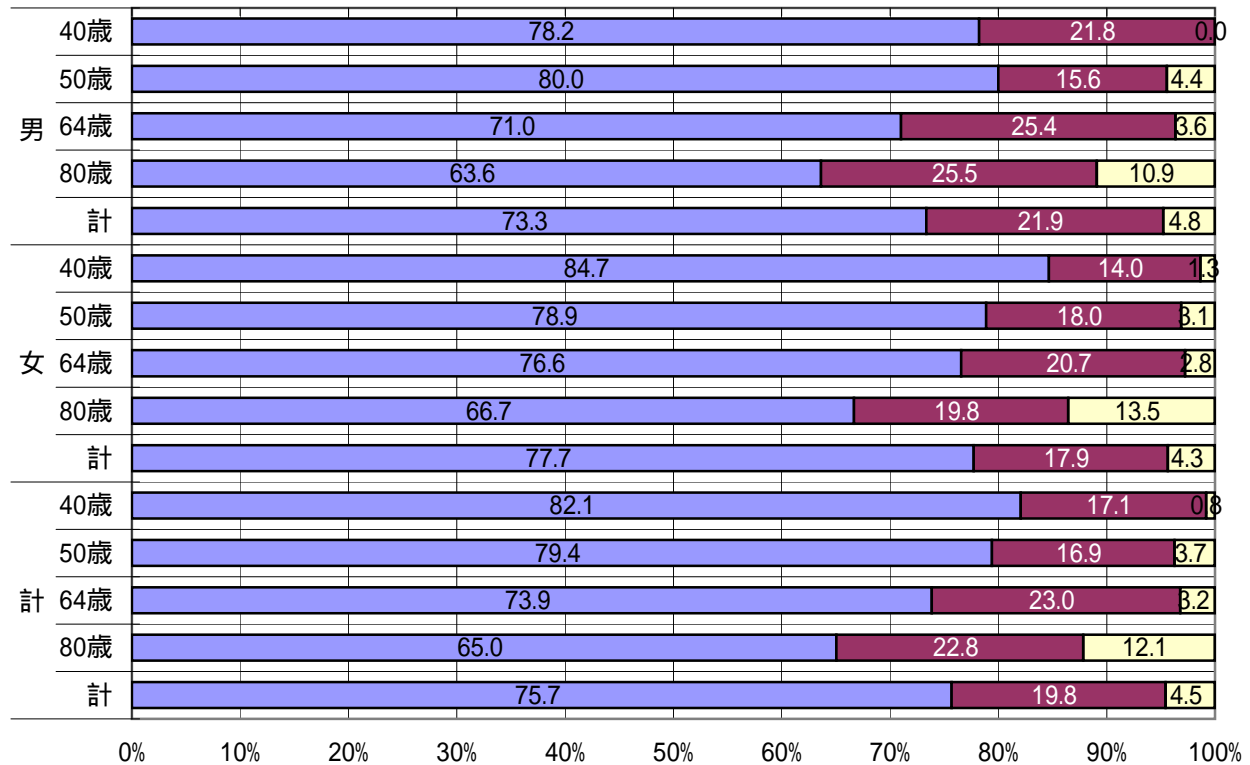
問4 寝る前に甘い食べ物や飲み物を飲食することがありますか。



リスク低減指標基礎調査分集計結果

問5 糸楊枝(デンタルフロス)や歯間ブラシを使用することは歯周病の予防に効果的であると思いますか。

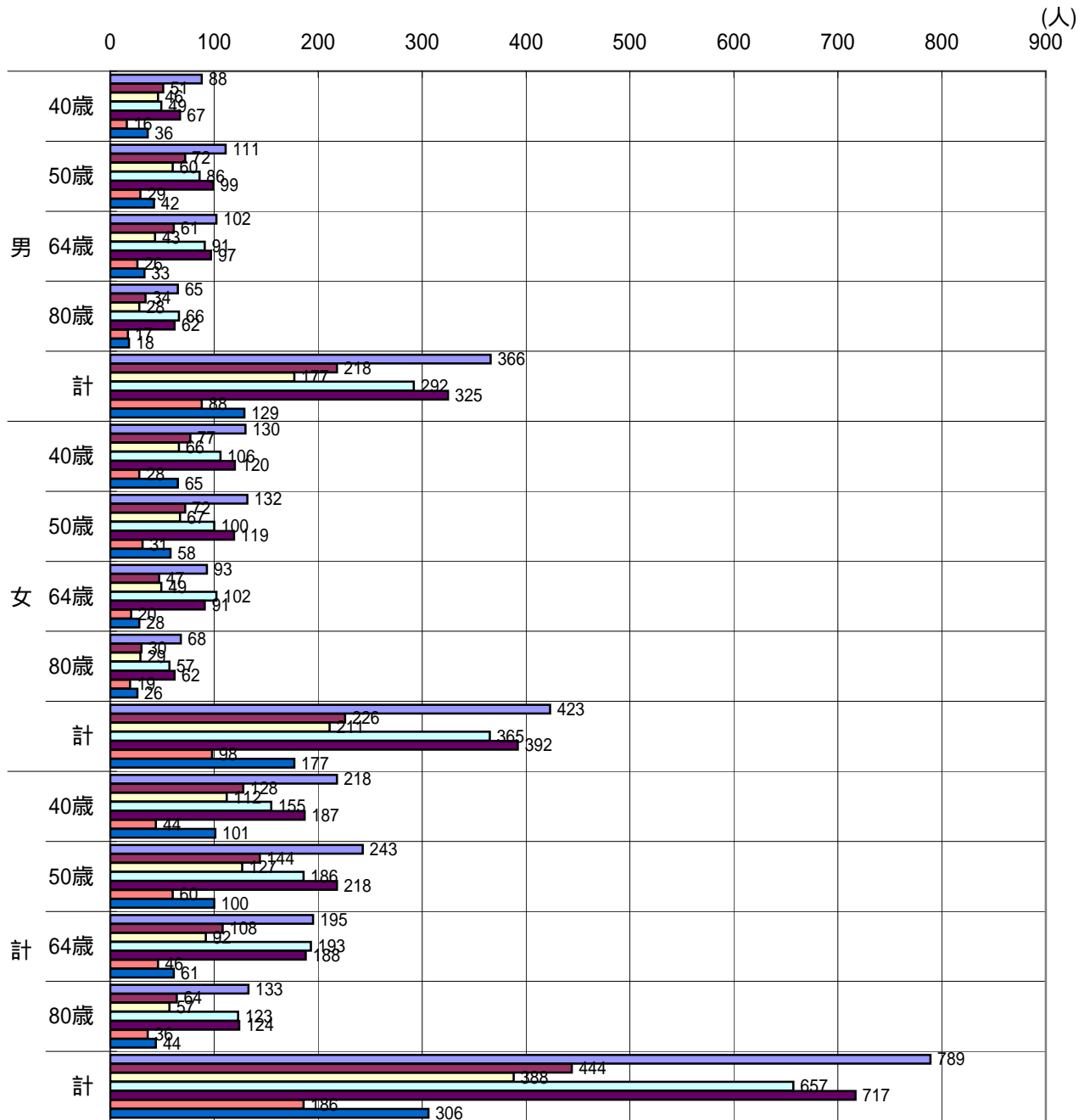
□はい ■いいえ □無回答



リスク低減指標基礎調査分集計結果

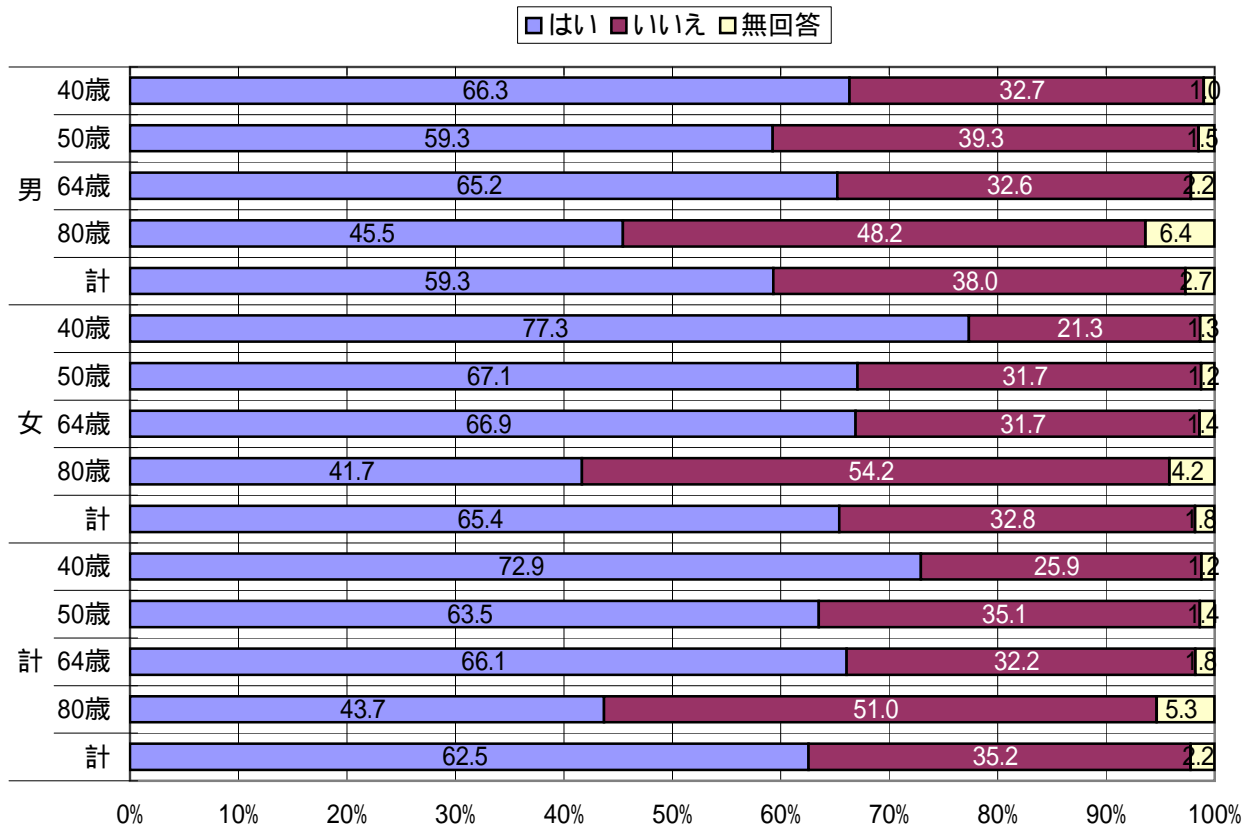
問6 喫煙と関係のあると思う疾患に をつけてください。

■ がん
 ■ 脳卒中
 ■ 心疾患
 ■ ぜんそく
 ■ 気管支炎
 ■ 胃潰瘍
 ■ 歯周病

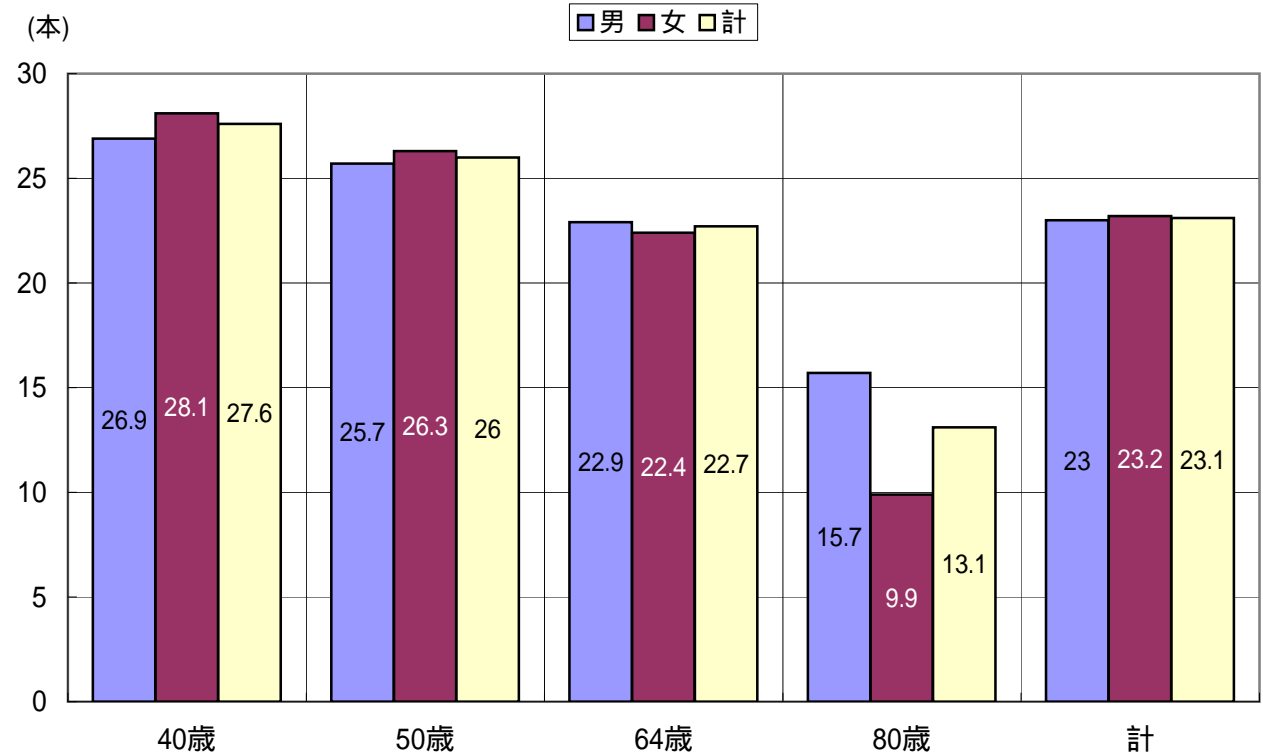


リスク低減指標基礎調査分集計結果

問7 歯科医師や歯科衛生士からの歯の磨き方の指導を受けたことがありますか。



問8 口の中には現在何本の歯が残っていますか。
1人平均歯数



リスク低減指標基礎調査分集計結果

問8 口の中には現在何本の歯が残っていますか。
歯数のカテゴリー別状況

