

A wide-angle photograph of a vast field of bright red flowers, likely Japanese Anemone, stretching across a hillside. The sky is a deep blue with scattered white clouds. In the distance, a line of green trees and a body of water are visible. A few people can be seen walking on a path through the flowers.

# TRIP IBARAKI

IN JAPAN

Feel Japan in Ibaraki Prefecture



Home to the Pacific Ocean, mountains, countless rivers and expansive lakes, Ibaraki features an ever-changing array of unique landscapes just waiting to be explored.

The rich natural environment means there's plenty of fresh, local cuisine to sample wherever you go in Ibaraki.

As each area of the prefecture offers a different experience, there's no telling what you'll discover.

With stunning scenic landscapes all-year round, what are you waiting for?

Welcome to Ibaraki

# INTRODUCTION





# FLOWERS



## A Blossom for Every Season

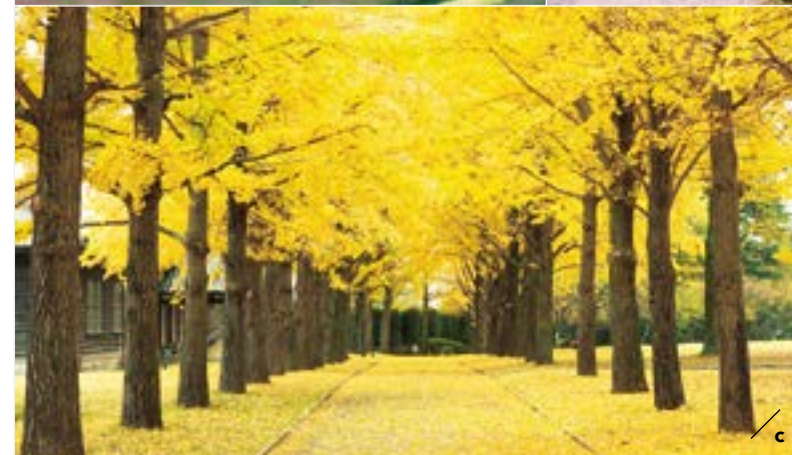
From the fragrant plum blossoms that signal the beginning of Spring to delicate pink cherry blossoms in full bloom, and endless blue nemophila flowers to fiery red Autumn foliage, Ibaraki is a flower lover's paradise.



a



b



c



d



e

**a.** Kochia bushes dye the hills green in Summer and fiery red in the Autumn at Hitachi Seaside Park. (Hitachinaka City)  
**b.** The world's largest bronze statue. (Ushiku Daibutsu Big Buddha, Ushiku City) **c.** Ginkgo trees form a dazzling yellow avenue. (Ibaraki Prefectural Archives & Museum, Mito City) **d.** 100 different kinds of plum blossom burst in to life at Kairakuen Garden. (Mito City) **e.** A 1.8km avenue of cherry blossom trees lines this canal. (Fukuokazeki Weir, Tsukubamirai City)





# NATURE

## A Landscape of Water and Earth

With mountains, including the distinctive Mount Tsukuba, miles of coastline, the vast Lake Kasumigaura and countless rivers, Ibaraki is home to a diverse range of landscapes. Lose yourself in nature in Ibaraki.



a



b



c



d



e

**a.** Fukuroda Falls reveals new sides to its beauty as the seasons change. (Daigo Town)  
**b.** Lake Kasumigaura, the only place in Japan to see *hobikisen* traditional fishing boats. (Lake Kasumigaura) **c.** The slopes of Mount Tsukuba appear to change colour during the dawn and twilight hours. (Mount Tsukuba, Tsukuba City) **d.** The must-see Ryujin Suspension Bridge in North Ibaraki Geopark. (Hitachiota City) **e.** Plateau Satomi is perfect place for stargazing. (Hitachiota City) **f.** Fukuroda Falls freezes during Winter. (Daigo Town) **g.** Spacious sands and gentle waves at Oarai Sunbeach. (Oarai Town).



f



g





# TRADITION

A Spirit Passed Down for Generations

From long ago, the natural environment and natural phenomena have been regarded as deities in Japanese culture. Gods are present in everything, from ancient trees to the morning dew. Even today, this culture and the traditions that grew from it remain present in everyday life.



a



d



e



f

For more information:



b



c



g

**a.** Kamiiso Shrine Gate. (Isosaki Shrine, Oarai Town) **b.** This building was designed by Okakura Tenshin, one of the founding fathers of modern art in Japan. (Izura Rokkakudo, Kitaibaraki City) **c.** Kodokan, a university during the Edo Period (1603 - 1868). (Mito City) **d.** The main shrine building at Kashima Jingu Grand Shrine. (Kashima City) **e.** A purification ritual during Gion Festival. (Chikusei City) **f.** Early May is the best time to see Wisteria flowers. (Kasama Inari Shrine, Kasama City) **g.** During this festival, irises fill the waterfront city of Itako. Visitors to the festival can also see a bride dressed in a traditional wedding kimono travel to her new husband's family by boat in a traditional ceremony. (Itako Iris Festival, Itako City)



# EXPERIENCE



a



c



d



e

## Only in Ibaraki

Rich in both natural and cultural resources, Ibaraki has something for everyone, whether you're an outdoor or indoor person. With a range of activities and experiences on offer, you're sure to find something to suit you.



b

**a.** Japan's highest bungee jump. (Ryujin Suspension Bridge, Hitachiota City) **b.** 180km of dedicated cycle paths make up Ibaraki's Ring Ring Road cycle network. (Tsukuba City, Tsuchiura City, Kasumigaura City, Namegata City) **c.** The Tsuchiura All Japan Fireworks Competition, one of Japan's three biggest fireworks displays. (Tsuchiura City) **d.** One of Japan's biggest aquariums. (AQUAWORLD Ibaraki Prefectural Oarai Aquarium, Oarai Town) **e.** Experience local life with a *minpaku* homestay. (locations throughout Ibaraki) **f.** Pottery making. (Kasama City) **g.** Golf. (locations throughout Ibaraki)

For more information:



f



g



# TECHNOLOGY Ready for the Future

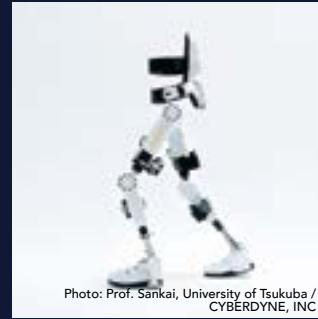
## Kashima Port Nightview Cruise

Enter a futuristic world of lights and industry with this nighttime cruise in Kashima Port.



JAXA Tsukuba Space Center

Learn about Japan's space programme and the history of JAXA at this center.



Cyberdyne Studio

The studio offers visitors the chance to get up close to cutting-edge technologies, such as the world's first Wearable Cyborg HAL.



Tsukuba Expo Center

Featuring a science museum and planetarium, Tsukuba Expo Center has something for all ages to enjoy.

Tsukuba City is at the forefront of scientific research in Japan. Specialising in space, science and engineering, the cutting-edge research being conducted in Tsukuba turns humanity's dreams into reality. Set your curiosity alight with a visit to one of the many research facilities open to the public.

For more information:



# FOOD The Heart of Japanese Cuisine



Hitachi Aki Soba Noodles

The Hitachi Aki Soba variety of buckwheat is native to Ibaraki and is much-prized by soba noodle shops around Japan for its superior flavour.



Hoshiimo Dried Sweet Potatoes

Hoshiimo are made by steaming and then drying sweet potatoes. More than 80% of Japan's dried sweet potatoes are produced in Ibaraki!



Anglerfish Hotpot

Anglerfish hotpot is a classic Winter dish in Ibaraki.

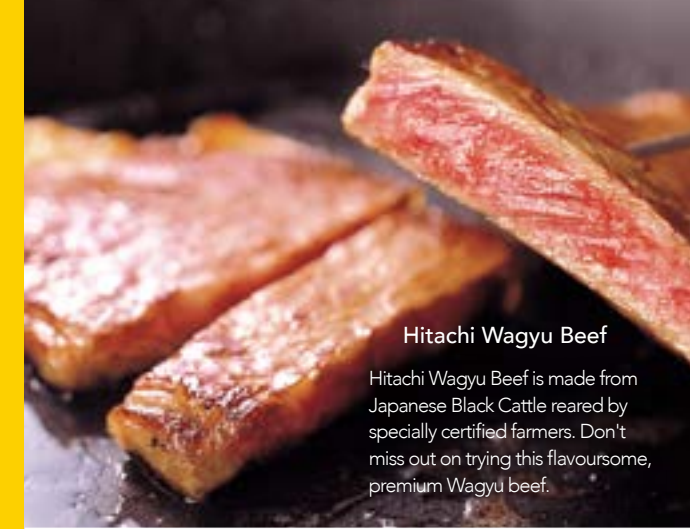


Natto fermented soy beans

This traditional food is much loved for its health properties.

Blessed with abundant fresh fruits and vegetables, high quality meat and a wide variety of seafood, Ibaraki is an agriculture and fisheries leader. With resources like these, it's no wonder Ibaraki is the perfect place to experience Japan's rich food culture.

For more information:



Hitachi Wagyu Beef

Hitachi Wagyu Beef is made from Japanese Black Cattle reared by specially certified farmers. Don't miss out on trying this flavoursome, premium Wagyu beef.



Seafood

Thanks to its many fishing ports, Ibaraki has plenty of fresh seafood to enjoy all year-round.



Sake

There is a long history of sake brewing in Ibaraki and it remains one of the prefecture's specialities today. Try one of Ibaraki's local brews for a true sake experience.





**Yuki Tsumugi Silk**

Ultra-fine silk cloth, woven using hand-spun silk thread.



**Nishinouchi Washi Japanese Paper**

This durable and long-lasting washi paper is made in Hitachiota City from the fibres of the kozo or 'paper mulberry' tree.



**Yamizo-nuri Lacquerware**

Yamizo-nuri lacquerware is produced using lacquer from Daigo Town, known for its transparent, shiny finish. Yamizo-nuri lacquerware's all-round superior quality makes it an item to be passed down the generations.

For more information:



**Kasama-yaki Pottery**

The Kasama-yaki style of pottery is characterised by artists who blend traditional techniques with unique and often playful design aesthetics.

The Beauty in the Everyday

# ARTS & CRAFTS

Ibaraki's local crafts combine traditions and skills passed down through the generations with craftsmanship and design for today's lifestyles.

With the perfect balance of simplicity, elegance and history, Ibaraki's local crafts make the ideal addition to everyday life.



**Suifu Lanterns**

Known for their durability, Suifu lanterns can be found in a range of designs, from the classic to the modern.



**Katsurabina Dolls**

These dolls are produced using time-honoured colour combinations and patterns taken from traditional Japanese design. Each doll is individually crafted to represent particular meanings and sentiments.



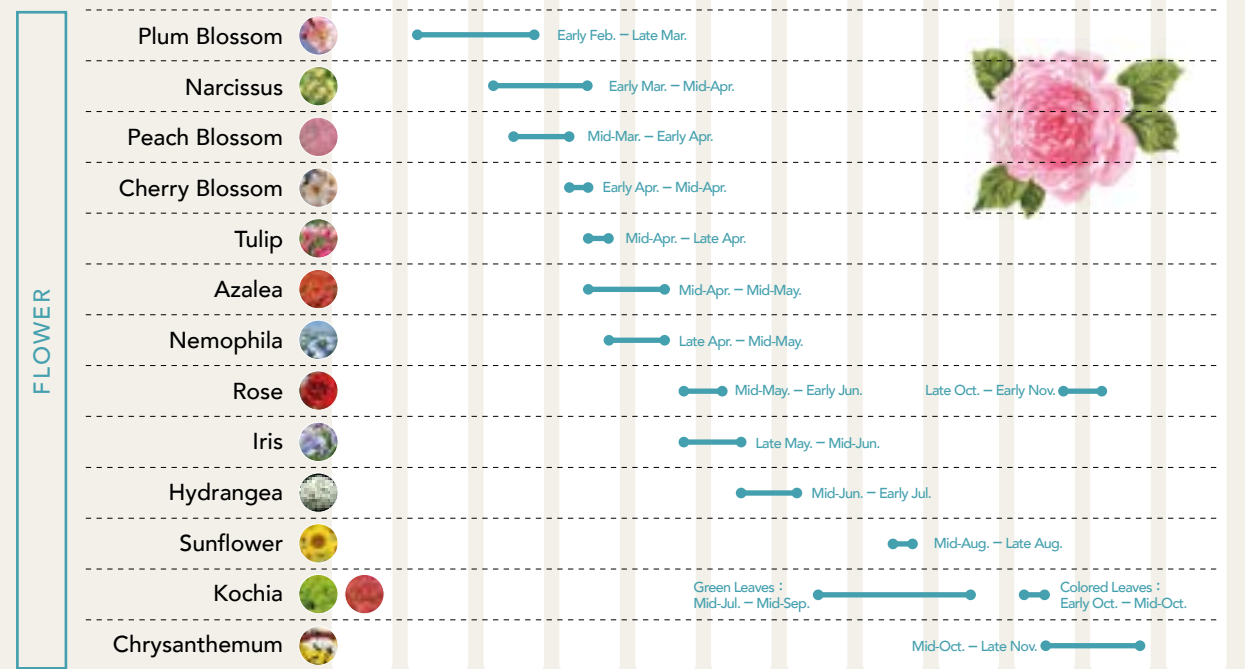
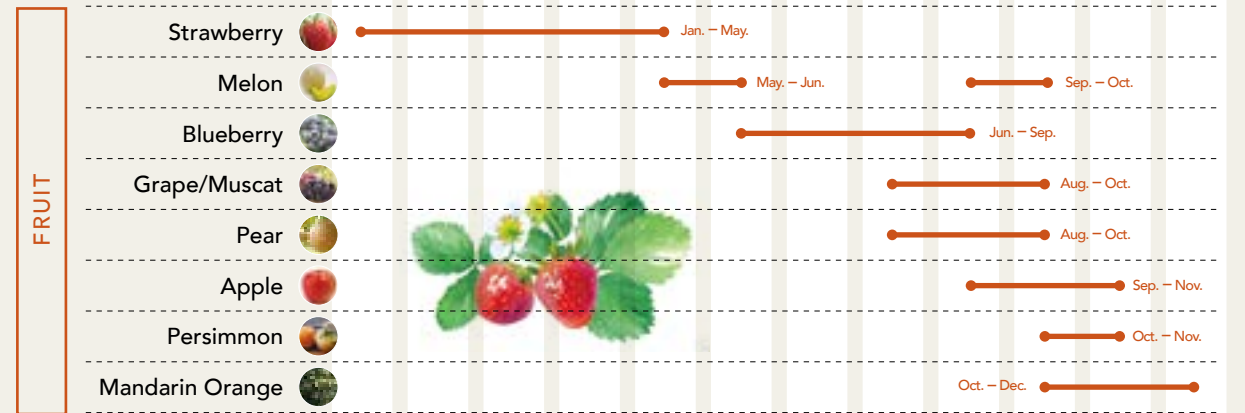
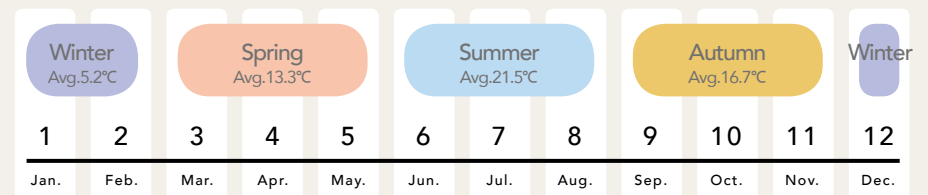
**Japanese Cedar Incense**

This natural incense is produced using Japanese cedar from the foothills of Mount Tsukuba. The incense is made using traditional production techniques, including grinding the cedar with water-power.

# CALENDAR Fruit Picking & Flowers

Average temperatures for Mito City (2016)

For more information:







## ACCESS

- **Narita - Mito** \_\_\_\_\_  
 75 min by car on an expressway  
 ..... (Between Shin-kuko IC and Mito IC)
- **Tokyo - Mito** \_\_\_\_\_  
 75 min by Limited Express train  
 ..... (From Tokyo sta.)  
 70 min by car on an expressway  
 ..... (Between Mukojima IC and Mito IC)
- **Narita - Tsukuba** \_\_\_\_\_  
 45 min by car on an expressway  
 (Between Shin-kuko IC and Tsukuba-chuo IC)
- **Akihabara sta. - Tsukuba sta.** \_\_\_\_\_  
 45 min by Rapid Tsukuba Express
- **Tokyo sta. - Ibaraki Airport** \_\_\_\_\_  
 About 100 min by bus
- **Mito sta. - Ibaraki Airport** \_\_\_\_\_  
 About 40 min by bus
- **Ishioka sta. - Ibaraki Airport** \_\_\_\_\_  
 About 35 min by bus

### Ibaraki Prefectural Tourism & Local Products Association

1-5-38 Sannomaru, Mito City, Ibaraki

TEL.+81-29-226-3800

FAX.+81-29-221-9791

HP <https://english.ibarakiguide.jp/>

f Ibaraki Sightseeing

@ ibaraki.official

