

1 平成16年東京都中央卸売市場取扱実績

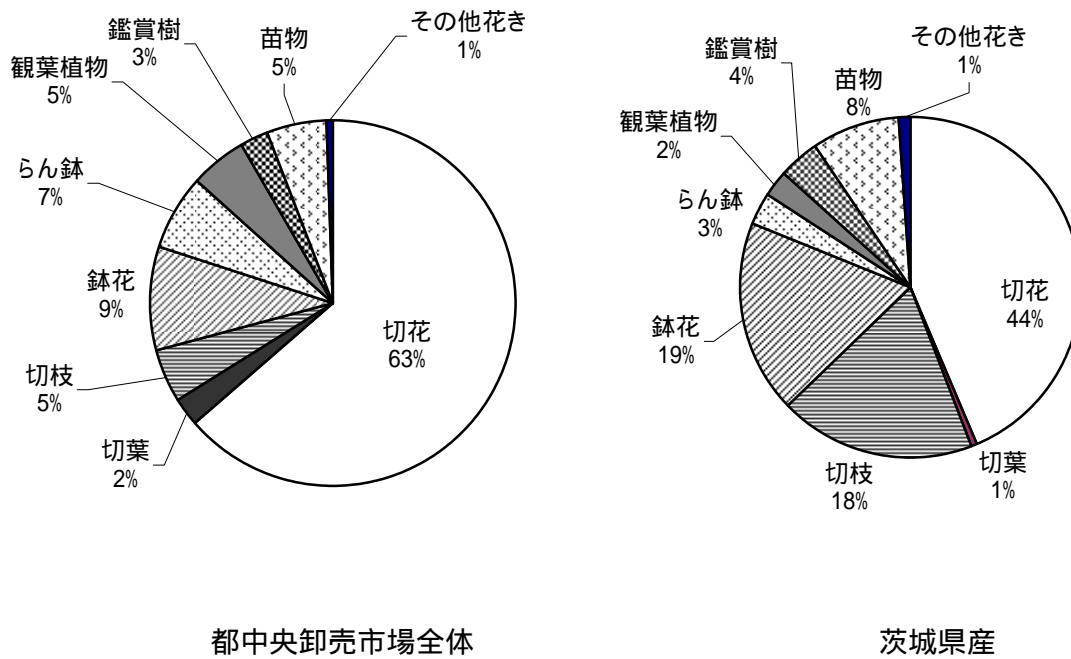
1- 東京都中央卸売市場 部類別販売実績(総数)

| | | 年計 | 1月 | 2月 | 3月 | 4月 | 5月 | 6月 | 7月 | 8月 | 9月 | 10月 | 11月 | 12月 |
|-------|--------|------------|-----------|-----------|------------|-----------|-----------|-----------|-----------|-----------|-----------|-----------|-----------|------------|
| 総数 | 金額(千円) | 95,916,990 | 5,932,815 | 6,843,559 | 10,683,770 | 8,395,742 | 8,632,628 | 6,999,047 | 6,383,890 | 6,371,932 | 8,456,619 | 7,675,842 | 8,370,084 | 11,171,060 |
| | 前年対比 | 101% | 93% | 110% | 107% | 109% | 86% | 106% | 88% | 106% | 102% | 90% | 122% | 97% |
| 切花 | 数量(千本) | 1,022,284 | 69,993 | 78,338 | 121,885 | 87,209 | 85,344 | 74,813 | 84,582 | 83,417 | 101,240 | 67,955 | 69,786 | 97,722 |
| | 前年対比 | 100% | 101% | 103% | 102% | 109% | 98% | 95% | 101% | 96% | 103% | 87% | 103% | 101% |
| | 金額(千円) | 60,981,296 | 3,990,841 | 4,406,951 | 7,577,796 | 4,772,625 | 4,655,993 | 4,259,753 | 4,348,584 | 4,841,369 | 5,968,320 | 5,103,109 | 4,845,018 | 6,210,938 |
| | 前年対比 | 102% | 91% | 107% | 108% | 117% | 87% | 112% | 91% | 108% | 100% | 91% | 132% | 95% |
| 切葉 | 数量(千枚) | 83,346 | 4,812 | 5,225 | 7,945 | 8,403 | 9,032 | 7,110 | 7,017 | 6,022 | 7,666 | 6,936 | 6,666 | 6,510 |
| | 前年対比 | 103% | 100% | 99% | 109% | 111% | 96% | 100% | 101% | 110% | 109% | 94% | 117% | 97% |
| | 金額(千円) | 2,370,209 | 136,233 | 156,846 | 251,396 | 251,820 | 240,353 | 191,072 | 194,044 | 161,977 | 211,225 | 210,542 | 189,740 | 174,961 |
| | 前年対比 | 102% | 94% | 102% | 112% | 115% | 91% | 110% | 98% | 108% | 100% | 93% | 116% | 91% |
| 切枝 | 数量(千束) | 30,918 | 1,440 | 2,314 | 2,094 | 1,250 | 1,123 | 1,350 | 1,530 | 1,281 | 1,798 | 2,109 | 2,443 | 12,186 |
| | 前年対比 | 102% | 92% | 98% | 114% | 103% | 102% | 102% | 95% | 105% | 102% | 94% | 135% | 98% |
| | 金額(千円) | 4,659,609 | 264,123 | 428,173 | 407,639 | 260,915 | 236,358 | 221,547 | 222,667 | 212,182 | 326,375 | 387,426 | 413,311 | 1,278,891 |
| | 前年対比 | 103% | 96% | 106% | 118% | 110% | 101% | 98% | 96% | 112% | 105% | 100% | 124% | 95% |
| 鉢花 | 数量(千鉢) | 30,927 | 2,460 | 2,709 | 2,899 | 3,185 | 3,642 | 2,387 | 1,548 | 1,067 | 2,274 | 2,240 | 3,069 | 3,448 |
| | 前年対比 | 93% | 102% | 104% | 89% | 101% | 81% | 103% | 86% | 82% | 101% | 86% | 88% | 95% |
| | 金額(千円) | 8,740,375 | 535,499 | 642,566 | 705,333 | 822,290 | 1,207,228 | 550,778 | 356,051 | 253,688 | 575,526 | 558,663 | 1,093,762 | 1,438,991 |
| | 前年対比 | 95% | 98% | 116% | 100% | 101% | 84% | 81% | 73% | 86% | 115% | 87% | 103% | 101% |
| らん鉢 | 数量(千鉢) | 2,513 | 216 | 230 | 257 | 236 | 229 | 165 | 139 | 108 | 158 | 132 | 224 | 419 |
| | 前年対比 | 100% | 99% | 103% | 101% | 102% | 89% | 128% | 98% | 121% | 105% | 88% | 101% | 92% |
| | 金額(千円) | 6,355,925 | 437,297 | 442,144 | 560,008 | 558,750 | 550,012 | 411,041 | 450,344 | 301,544 | 457,595 | 468,657 | 631,113 | 1,087,418 |
| | 前年対比 | 102% | 105% | 116% | 104% | 105% | 92% | 113% | 95% | 113% | 102% | 105% | 102% | 95% |
| 観葉植物 | 数量(千鉢) | 14,036 | 732 | 881 | 1,193 | 1,656 | 1,648 | 1,654 | 1,416 | 1,045 | 1,276 | 994 | 922 | 618 |
| | 前年対比 | 92% | 104% | 113% | 102% | 93% | 80% | 95% | 80% | 93% | 95% | 85% | 97% | 100% |
| | 金額(千円) | 4,768,588 | 276,910 | 309,820 | 447,879 | 587,070 | 532,476 | 558,471 | 488,236 | 351,093 | 393,303 | 316,390 | 303,950 | 202,991 |
| | 前年対比 | 108% | 99% | 95% | 100% | 114% | 133% | 105% | 125% | 98% | 103% | 111% | 88% | 103% |
| 鑑賞樹 | 数量(千鉢) | 5,814 | 236 | 378 | 561 | 953 | 995 | 540 | 284 | 182 | 400 | 411 | 465 | 407 |
| | 前年対比 | 94% | 107% | 113% | 102% | 98% | 86% | 113% | 81% | 85% | 99% | 73% | 78% | 111% |
| | 金額(千円) | 2,460,084 | 82,163 | 130,582 | 208,335 | 404,765 | 540,370 | 303,026 | 92,526 | 63,140 | 142,340 | 133,878 | 173,170 | 185,791 |
| | 前年対比 | 98% | 94% | 112% | 101% | 97% | 92% | 155% | 73% | 101% | 108% | 71% | 83% | 110% |
| 苗木 | 数量(千箱) | 3,808 | 158 | 206 | 340 | 498 | 478 | 407 | 215 | 136 | 221 | 329 | 499 | 322 |
| | 前年対比 | 93% | 95% | 119% | 108% | 100% | 83% | 103% | 86% | 88% | 89% | 67% | 100% | 104% |
| | 金額(千円) | 5,033,804 | 195,339 | 303,597 | 498,489 | 699,940 | 634,642 | 466,846 | 182,429 | 153,638 | 344,153 | 454,027 | 669,490 | 431,213 |
| | 前年対比 | 98% | 96% | 142% | 113% | 100% | 80% | 93% | 56% | 84% | 118% | 72% | 132% | 128% |
| その他花き | 数量(千箱) | 785 | 17 | 30 | 39 | 63 | 58 | 51 | 93 | 79 | 55 | 56 | 128 | 116 |
| | 前年対比 | 96% | 105% | 70% | 129% | 70% | 86% | 106% | 92% | 139% | 89% | 64% | 126% | 99% |
| | 金額(千円) | 547,099 | 14,412 | 22,880 | 26,895 | 37,566 | 35,197 | 36,513 | 49,010 | 33,299 | 37,781 | 43,151 | 50,529 | 159,866 |
| | 前年対比 | 109% | 138% | 154% | 99% | 99% | 99% | 128% | 87% | 104% | 108% | 104% | 131% | 112% |
| その他花き | 数量(千箱) | 697 | 837 | 773 | 689 | 600 | 603 | 722 | 526 | 421 | 686 | 766 | 394 | 1,382 |
| | 前年対比 | 114% | 131% | 220% | 77% | 141% | 116% | 120% | 95% | 75% | 120% | 162% | 104% | 113% |

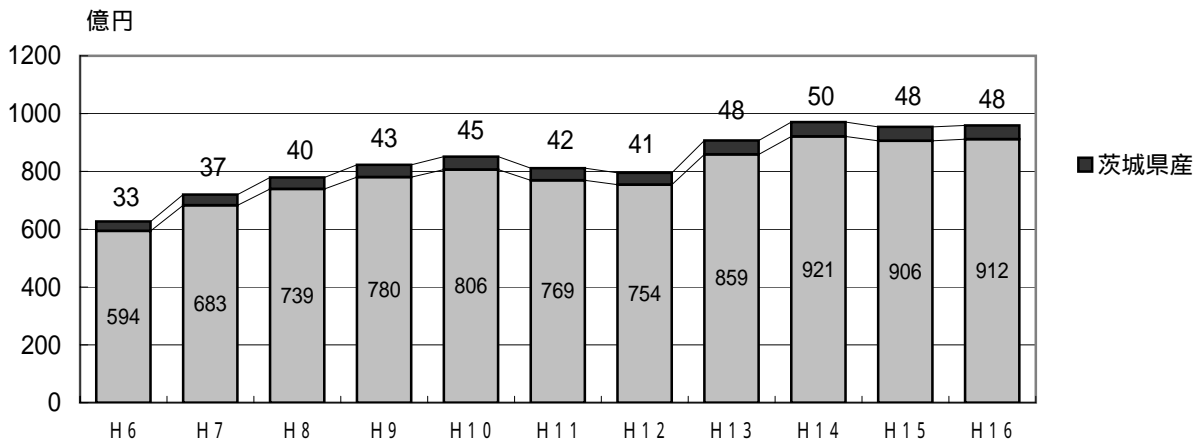
1- 東京都中央卸売市場 部類別販売実績(茨城県産)

| | | 年計 | 1月 | 2月 | 3月 | 4月 | 5月 | 6月 | 7月 | 8月 | 9月 | 10月 | 11月 | 12月 |
|-------|---------|-----------|---------|---------|---------|---------|---------|---------|---------|---------|---------|---------|---------|---------|
| 総数 | 金額(千円) | 4,752,808 | 213,708 | 256,056 | 358,416 | 360,692 | 551,057 | 360,122 | 326,432 | 288,526 | 408,323 | 344,178 | 352,684 | 932,613 |
| | 前年対比 | 100% | 103% | 79% | 87% | 90% | 107% | 96% | 132% | 88% | 93% | 121% | 91% | 104% |
| 切花 | 数量(千本) | 43,233 | 1,722 | 1,631 | 2,305 | 2,095 | 3,291 | 4,476 | 5,891 | 5,713 | 7,232 | 4,014 | 2,387 | 2,476 |
| | 前年対比 | 96% | 91% | 110% | 102% | 106% | 108% | 88% | 85% | 97% | 112% | 85% | 87% | 93% |
| | 金額(千円) | 2,078,288 | 105,090 | 97,458 | 166,148 | 124,724 | 190,216 | 214,144 | 214,256 | 211,574 | 278,942 | 195,692 | 133,739 | 146,305 |
| | 前年対比 | 102% | 96% | 121% | 117% | 123% | 102% | 113% | 78% | 122% | 110% | 85% | 108% | 85% |
| 切葉 | 価格(円/本) | 48 | 61 | 60 | 72 | 60 | 58 | 48 | 36 | 37 | 39 | 49 | 56 | 59 |
| | 前年対比 | 107% | 106% | 110% | 115% | 116% | 95% | 129% | 92% | 127% | 98% | 101% | 124% | 91% |
| | 数量(千枚) | 750 | 8 | 4 | 4 | 88 | 236 | 118 | 115 | 46 | 69 | 37 | 12 | 14 |
| | 前年対比 | 94% | 791% | 377% | 293% | 100% | 92% | 100% | 85% | 57% | 138% | 116% | 110% | 66% |
| 切枝 | 金額(千円) | 25,899 | 143 | 128 | 122 | 3,733 | 6,342 | 4,485 | 3,991 | 1,392 | 2,234 | 1,858 | 480 | 991 |
| | 前年対比 | 94% | 451% | 475% | 180% | 104% | 78% | 99% | 86% | 82% | 95% | 128% | 128% | 127% |
| | 価格(円/枚) | 35 | 19 | 33 | 28 | 42 | 27 | 38 | 35 | 30 | 32 | 50 | 39 | 73 |
| | 前年対比 | 99% | 57% | 126% | 61% | 104% | 85% | 98% | 102% | 143% | 68% | 111% | 117% | 192% |
| 鉢花 | 数量(千束) | 9,253 | 163 | 236 | 230 | 78 | 65 | 120 | 200 | 161 | 181 | 232 | 292 | 7,296 |
| | 前年対比 | 97% | 81% | 88% | 112% | 84% | 92% | 91% | 90% | 98% | 92% | 90% | 141% | 97% |
| | 金額(千円) | 873,513 | 24,149 | 32,674 | 30,633 | 17,482 | 15,883 | 19,356 | 28,529 | 25,967 | 31,267 | 33,884 | 29,411 | 584,278 |
| | 前年対比 | 100% | 102% | 96% | 124% | 105% | 101% | 110% | 101% | 111% | 103% | 104% | 115% | 97% |
| らん鉢 | 価格(円/束) | 94 | 148 | 138 | 133 | 224 | 246 | 161 | 143 | 162 | 173 | 146 | 101 | 80 |
| | 前年対比 | 103% | 126% | 109% | 111% | 125% | 111% | 121% | 111% | 113% | 112% | 116% | 81% | 100% |
| | 数量(千鉢) | 2,773 | 193 | 210 | 221 | 280 | 410 | 192 | 165 | 94 | 155 | 197 | 340 | 316 |
| | 前年対比 | 92% | 90% | 125% | 95% | 122% | 82% | 88% | 80% | 84% | 88% | 75% | 89% | 106% |
| 観葉植物 | 金額(千円) | 882,903 | 45,740 | 62,612 | 68,042 | 85,616 | 181,510 | 42,745 | 34,960 | 18,889 | 40,658 | 45,745 | 117,811 | 138,575 |
| | 前年対比 | 97% | 88% | 136% | 111% | 112% | 90% | 84% | 63% | 88% | 104% | 69% | 110% | 101% |
| | 価格(円/鉢) | 318 | 237 | 298 | 309 | 306 | 443 | 223 | 212 | 200 | 262 | 232 | 346 | 438 |
| | 前年対比 | 105% | 98% | 109% | 117% | 92% | 110% | 95% | 79% | 104% | 118% | 92% | 124% | 96% |
| 鑑賞樹 | 数量(千鉢) | 46 | 5 | 6 | 7 | 4 | 5 | 3 | 3 | 2 | 2 | 2 | 2 | 3 |
| | 前年対比 | 64% | 79% | 69% | 65% | 43% | 32% | 134% | 108% | 123% | 96% | 74% | 59% | 86% |
| | 金額(千円) | 137,419 | 12,812 | 15,535 | 18,757 | 16,513 | 14,593 | 9,767 | 9,005 | 4,398 | 7,805 | 8,390 | 8,530 | 11,314 |
| | 前年対比 | 109% | 136% | 146% | 131% | 131% | 97% | 119% | 97% | 96% | 91% | 90% | 73% | 94% |
| 苗木 | 価格(円/鉢) | 2,979 | 2,409 | 2,419 | 2,627 | 3,757 | 3,112 | 2,942 | 3,101 | 2,443 | 3,275 | 4,024 | 3,496 | 3,496 |
| | 前年対比 | 170% | 172% | 212% | 200% | 301% | 307% | 89% | 90% | 78% | 94% | 121% | 123% | 109% |
| | 数量(千鉢) | 688 | 33 | 42 | 60 | 89 | 78 | 77 | 73 | 60 | 67 | 50 | 38 | 22 |
| | 前年対比 | 80% | 113% | 126% | 102% | 99% | 75% | 86% | 67% | 81% | 62% | 59% | 68% | 91% |
| その他花き | 金額(千円) | 114,994 | 4,768 | 5,916 | 8,379 | 15,030 | 16,957 | 16,601 | 11,808 | 9,418 | 10,634 | 7,023 | 5,625 | 2,835 |
| | 前年対比 | 89% | 92% | 107% | 74% | 88% | 97% | 109% | 70% | 97% | 77% | 79% | 108% | 110% |
| | 価格(円/鉢) | 167 | 143 | 142 | 139 | 169 | 218 | 216 | 162 | 157 | 158 | 141 | 148 | 131 |
| | 前年対比 | 111% | 82% | 85% | 73% | 88% | 128% | 127% | 104% | 120% | 124% | 134% | 157% | 121% |
| 苗木 | 数量(千箱) | 368 | 8 | 18 | 31 | 49 | 79 | 34 | 36 | 24 | 34 | 28 | 18 | 8 |
| | 前年対比 | 94% | 133% | 123% | 98% | 89% | 80% | 117% | 109% | 142% | 111% | 69% | 81% | 56% |
| | 金額(千円) | 184,760 | 2,201 | 5,643 | 12,469 | 28,834 | 66,697 | 15,789 | 9,360 | 6,644 | 9,409 | 15,106 | 8,427 | 4,182 |
| | 前年対比 | 89% | 86% | 106% | 98% | 99% | 84% | 91% | 71% | 137% | 104% | 85% | 86% | 82% |
| その他花き | 価格(円/箱) | 502 | 277 | 316 | 399 | 583 | 844 | 461 | 262 | 277 | 273 | 545 | 469 | 513 |
| | 前年対比 | 95% | 65% | 87% | 99% | 111% | 104% | 78% | 65% | 96% | 93% | 123% | 106% | 147% |
| | 数量(千箱) | 341 | 16 | 27 | 38 | 46 | 42 | 35 | 19 | 9 | 17 | 26 | 41 | 24 |
| | 前年対比 | 91% | 92% | 148% | 115% | 88% | 84% | 100% | 90% | 88% | 86% | 57% | 96% | 88% |
| その他花き | 金額(千円) | 398,932 | 17,909 | 32,965 | 49,605 | 59,482 | 51,070 | 36,881 | 13,211 | 9,672 | 22,464 | 30,982 | 46,495 | 28,196 |
| | 前年対比 | 96% | 97% | 176% | 121% | 94% | 85% | 90% | 50% | 77% | 101% | 62% | 127% | 112% |
| | 価格(円/箱) | 1,170 | 1,090 | 1,234 | 1,304 | 1,286 | 1,213 | 1,053 | 684 | 1,039 | 1,324 | 1,184 | 1,140 | 1,183 |
| | 前年対比 | 105% | 105% | 119% | 105% | 107% | 100% | 90% | 56% | 88% | 116% | 110% | 132% | 128% |
| その他花き | 数量(千箱) | 72 | 0 | 5 | 6 | 14 | 6 | 3 | 6 | 2 | 7 | 3 | 4 | 15 |
| | 前年対比 | 209% | 490% | 128% | 1033% | 199% | 150% | 818% | 300% | 625% | 197% | 546% | 113% | 186% |
| | 金額(千円) | 56,099 | 896 | 3,126 | 4,261 | 9,279 | 7,791 | 354 | 1,312 | 571 | 4,911 | 5,498 | 2,165 | 15,936 |
| | 前年対比 | 126% | 221% | 227% | 95% | 151% | 107% | 28% | 121% | 57% | 200% | 196% | 153% | 108% |
| その他花き | 価格(円/箱) | 783 | 2,346 | 570 | 745 | 685 | 1,336 | 110 | 218 | 231 | 679 | 2,021 | 492 | 1,088 |
| | 前年対比 | 60% | 45% | 176% | 9% | 76% | 71% | 3% | 40% | 9% | 102% | 36% | 135% | 58% |

1 - 部類別取扱金額シェア



2 取扱金額推移



都中央卸売市場花き部の整備状況

| | |
|---------|------------|
| 88/4/25 | 北足立市場花き部開場 |
| 89/9/5 | 大田市場花き部開場 |
| 93/2/24 | 板橋市場花き部開場 |
| 95/4/14 | 葛西市場花き部開場 |
| 03/4/13 | 世田谷市場花き部開場 |

2004 東京都中央卸売市場 月別品目別取扱実績

| 部類 | 項目 | | 品目 | 平成16年計 | 1月 | 2月 | 3月 | 4月 |
|-------------------------|---------|--------|-----------|------------|---------|---------|-----------|---------|
| | | | | | | | | |
| 切 | 輪 | 市場全体 | 数量(千本) | 158,243 | 11,028 | 9,943 | 17,831 | 10,844 |
| | | | 金額(千円) | 10,656,580 | 676,075 | 715,412 | 1,274,934 | 711,498 |
| | | 茨城県産 | 数量(千本) | 2,567 | 80 | 65 | 147 | 93 |
| | | | 金額(千円) | 161,898 | 5,120 | 4,560 | 12,106 | 7,872 |
| | スプレ-菊 | 市場全体 | 数量(千本) | 62,814 | 4,085 | 3,899 | 7,282 | 4,182 |
| | | | 金額(千円) | 3,256,549 | 176,380 | 194,506 | 388,467 | 204,389 |
| | | 茨城県産 | 数量(千本) | 188 | 3 | 0 | 0 | 0 |
| | | | 金額(千円) | 7,335 | 102 | 0 | 0 | 0 |
| | 小 | 市場全体 | 数量(千本) | 65,896 | 3,031 | 3,124 | 10,151 | 3,900 |
| | | | 金額(千円) | 2,179,825 | 90,059 | 119,156 | 355,553 | 117,327 |
| | | 茨城県産 | 数量(千本) | 15,461 | 0 | 0 | 0 | 26 |
| | | | 金額(千円) | 522,451 | 0 | 0 | 0 | 642 |
| | カーネーション | 市場全体 | 数量(千本) | 42,659 | 2,573 | 2,544 | 4,200 | 4,428 |
| | | | 金額(千円) | 1,902,819 | 96,569 | 101,861 | 216,435 | 192,201 |
| | | 茨城県産 | 数量(千本) | 349 | 36 | 32 | 38 | 62 |
| | | | 金額(千円) | 17,539 | 1,547 | 1,433 | 2,258 | 3,299 |
| スプレ-カーネーション | 市場全体 | 数量(千本) | 52,773 | 3,130 | 3,402 | 4,896 | 6,206 | |
| | | 金額(千円) | 2,567,251 | 129,188 | 145,004 | 296,252 | 295,944 | |
| | 茨城県産 | 数量(千本) | 2,561 | 265 | 290 | 312 | 429 | |
| | | 金額(千円) | 128,631 | 12,618 | 12,705 | 19,273 | 23,773 | |
| バラ | 市場全体 | 数量(千本) | 88,627 | 5,223 | 5,703 | 8,394 | 7,973 | |
| | | 金額(千円) | 5,534,747 | 365,297 | 401,287 | 699,622 | 446,108 | |
| | 茨城県産 | 数量(千本) | 3,372 | 217 | 213 | 304 | 308 | |
| | | 金額(千円) | 229,981 | 17,721 | 18,775 | 32,037 | 19,063 | |
| スプレ-バラ | 市場全体 | 数量(千本) | 25,157 | 1,619 | 1,650 | 2,243 | 2,606 | |
| | | 金額(千円) | 2,047,478 | 137,628 | 149,786 | 251,730 | 192,459 | |
| | 茨城県産 | 数量(千本) | 1,497 | 87 | 80 | 119 | 148 | |
| | | 金額(千円) | 130,437 | 8,712 | 8,306 | 15,260 | 11,846 | |
| 鉄砲ゆり | 市場全体 | 数量(千本) | 6,255 | 315 | 282 | 463 | 302 | |
| | | 金額(千円) | 577,266 | 34,515 | 35,643 | 63,013 | 33,779 | |
| | 茨城県産 | 数量(千本) | 2 | 0 | 0 | 0 | 0 | |
| | | 金額(千円) | 142 | 0 | 0 | 0 | 0 | |
| すかしゆり | 市場全体 | 数量(千本) | 9,789 | 507 | 452 | 960 | 863 | |
| | | 金額(千円) | 700,538 | 39,844 | 41,635 | 94,266 | 59,958 | |
| | 茨城県産 | 数量(千本) | 26 | 1 | 1 | 1 | 5 | |
| | | 金額(千円) | 1,275 | 62 | 30 | 118 | 246 | |
| その他ゆり (鉄砲ゆり,すかしゆり除く) | 市場全体 | 数量(千本) | 19,417 | 1,001 | 975 | 1,438 | 1,460 | |
| | | 金額(千円) | 4,286,903 | 270,034 | 276,799 | 414,141 | 327,117 | |
| | 茨城県産 | 数量(千本) | 44 | 7 | 2 | 2 | 2 | |
| | | 金額(千円) | 4,566 | 1,040 | 232 | 242 | 148 | |
| ストック | 市場全体 | 数量(千本) | 10,769 | 1,624 | 1,753 | 2,095 | 270 | |
| | | 金額(千円) | 761,111 | 111,395 | 109,173 | 132,622 | 15,848 | |
| | 茨城県産 | 数量(千本) | 4 | 0 | 1 | 0 | 0 | |
| | | 金額(千円) | 291 | 0 | 89 | 0 | 1 | |
| スターチスタ シニユ-ータ | 市場全体 | 数量(千本) | 19,821 | 1,109 | 1,260 | 2,763 | 3,324 | |
| | | 金額(千円) | 832,527 | 59,414 | 73,332 | 182,904 | 76,705 | |
| | 茨城県産 | 数量(千本) | 1 | 0 | 0 | 0 | 1 | |
| | | 金額(千円) | 47 | 0 | 0 | 0 | 10 | |
| トルコキキョウ | 市場全体 | 数量(千本) | 16,913 | 366 | 532 | 691 | 998 | |
| | | 金額(千円) | 1,981,626 | 59,657 | 76,311 | 123,847 | 168,785 | |
| | 茨城県産 | 数量(千本) | 722 | 4 | 4 | 15 | 52 | |
| | | 金額(千円) | 81,433 | 533 | 409 | 2,552 | 9,011 | |

| 5月 | 6月 | 7月 | 8月 | 9月 | 10月 | 11月 | 12月 | 年平均 単価 |
|---------|---------|---------|-----------|-----------|---------|---------|-----------|-----------|
| 11,372 | 10,530 | 13,718 | 16,792 | 17,465 | 9,128 | 10,702 | 18,889 | 67 |
| 549,981 | 727,847 | 844,098 | 1,084,366 | 1,064,333 | 910,586 | 732,038 | 1,365,413 | |
| 375 | 578 | 456 | 186 | 217 | 159 | 77 | 135 | 63 |
| 19,596 | 33,588 | 21,839 | 11,508 | 13,612 | 15,164 | 6,144 | 10,789 | |
| 4,299 | 3,993 | 4,865 | 5,480 | 7,185 | 4,529 | 5,004 | 8,009 | 52 |
| 183,888 | 228,548 | 250,941 | 309,133 | 372,516 | 284,492 | 276,305 | 386,983 | |
| 2 | 24 | 17 | 7 | 67 | 52 | 7 | 9 | 39 |
| 76 | 1,091 | 558 | 222 | 2,284 | 2,295 | 332 | 375 | |
| 4,068 | 4,047 | 6,745 | 7,691 | 9,593 | 3,295 | 2,714 | 7,536 | 33 |
| 96,683 | 123,581 | 182,153 | 254,968 | 326,517 | 144,290 | 113,379 | 256,160 | |
| 164 | 1,184 | 2,873 | 3,912 | 4,916 | 1,810 | 541 | 35 | 34 |
| 4,733 | 42,173 | 81,828 | 126,267 | 164,524 | 76,208 | 24,513 | 1,564 | |
| 5,215 | 2,644 | 3,597 | 2,887 | 4,220 | 3,274 | 3,365 | 3,712 | 45 |
| 240,400 | 129,458 | 131,532 | 140,923 | 197,754 | 151,124 | 145,228 | 159,334 | |
| 71 | 29 | 0 | 0 | 4 | 16 | 23 | 38 | 50 |
| 4,169 | 959 | 0 | 0 | 64 | 680 | 1,056 | 2,075 | |
| 7,225 | 4,197 | 4,335 | 3,875 | 4,509 | 3,637 | 3,723 | 3,637 | 49 |
| 331,426 | 207,881 | 170,293 | 190,597 | 235,998 | 194,628 | 185,493 | 184,547 | |
| 608 | 91 | 20 | 0 | 7 | 75 | 232 | 232 | 50 |
| 32,346 | 3,558 | 321 | 0 | 236 | 2,947 | 9,942 | 10,912 | |
| 8,074 | 7,909 | 5,757 | 4,703 | 8,776 | 9,328 | 8,698 | 8,090 | 62 |
| 502,845 | 346,667 | 271,070 | 257,111 | 507,219 | 628,313 | 599,356 | 509,852 | |
| 354 | 340 | 261 | 173 | 377 | 275 | 277 | 273 | 68 |
| 22,690 | 13,206 | 10,240 | 8,520 | 21,578 | 21,575 | 23,134 | 21,441 | |
| 2,791 | 2,660 | 2,285 | 1,562 | 1,981 | 1,848 | 1,976 | 1,935 | 81 |
| 223,998 | 147,027 | 106,147 | 87,507 | 175,357 | 195,680 | 207,722 | 172,438 | |
| 139 | 151 | 146 | 111 | 141 | 128 | 128 | 121 | 87 |
| 11,733 | 8,252 | 6,717 | 5,906 | 12,579 | 14,123 | 15,080 | 11,922 | |
| 358 | 538 | 965 | 1,084 | 600 | 298 | 314 | 737 | 92 |
| 33,080 | 37,390 | 52,982 | 69,797 | 57,545 | 37,815 | 39,192 | 82,515 | |
| 1 | 0 | 1 | 0 | 0 | 0 | 0 | 0 | 63 |
| 105 | 0 | 13 | 24 | 0 | 0 | 0 | 0 | |
| 1,104 | 1,054 | 864 | 666 | 971 | 759 | 637 | 950 | 72 |
| 61,109 | 55,171 | 44,746 | 45,364 | 74,654 | 57,352 | 50,797 | 75,642 | |
| 11 | 0 | 0 | 0 | 0 | 0 | 4 | 2 | 50 |
| 535 | 5 | 0 | 0 | 0 | 0 | 174 | 107 | |
| 1,723 | 2,040 | 2,095 | 1,678 | 1,971 | 1,682 | 1,650 | 1,703 | 221 |
| 346,099 | 320,212 | 326,952 | 379,850 | 461,004 | 376,161 | 360,353 | 428,182 | |
| 2 | 5 | 7 | 0 | 0 | 0 | 2 | 15 | 103 |
| 168 | 310 | 289 | 1 | 0 | 0 | 86 | 2,052 | |
| 6 | 1 | 0 | 3 | 24 | 760 | 2,089 | 2,143 | 71 |
| 188 | 44 | 9 | 85 | 1,085 | 57,743 | 164,534 | 168,385 | |
| 0 | 0 | 0 | 0 | 0 | 2 | 1 | 0 | 70 |
| 0 | 0 | 0 | 0 | 0 | 154 | 44 | 4 | |
| 1,997 | 1,331 | 2,253 | 2,097 | 913 | 600 | 610 | 1,565 | 42 |
| 43,902 | 52,249 | 68,256 | 73,172 | 33,417 | 26,192 | 35,748 | 107,236 | |
| 1 | 0 | 0 | 0 | 0 | 0 | 0 | 0 | 34 |
| 25 | 6 | 6 | 0 | 0 | 0 | 0 | 0 | |
| 1,655 | 2,062 | 2,632 | 2,609 | 2,423 | 1,319 | 873 | 753 | 117 |
| 224,652 | 220,873 | 207,535 | 213,128 | 250,008 | 193,936 | 137,901 | 104,991 | |
| 137 | 194 | 220 | 50 | 14 | 15 | 10 | 7 | 113 |
| 22,053 | 23,261 | 15,471 | 2,845 | 1,603 | 1,897 | 1,216 | 583 | |

| 部類 | 項目 | | 品目 | 平成16年計 | 1月 | 2月 | 3月 | 4月 |
|----------|-----------------|--------|-----------|---------|---------|---------|---------|--------|
| | | | | | | | | |
| 切花 | フリージア | 市場全体 | 数量(千本) | 9,884 | 1,222 | 1,831 | 3,342 | 868 |
| | | | 金額(千円) | 456,862 | 65,459 | 85,292 | 141,615 | 36,865 |
| | | 茨城県産 | 数量(千本) | 2,966 | 584 | 445 | 557 | 29 |
| | | | 金額(千円) | 155,381 | 31,741 | 25,330 | 29,183 | 1,315 |
| | 大輪系 グラジオラス | 市場全体 | 数量(千本) | 6,243 | 227 | 215 | 332 | 225 |
| | | | 金額(千円) | 321,575 | 12,060 | 11,427 | 19,439 | 14,359 |
| | | 茨城県産 | 数量(千本) | 2,501 | 0 | 0 | 2 | 8 |
| | | | 金額(千円) | 111,385 | 0 | 0 | 91 | 343 |
| | 小輪系 グラジオラス | 市場全体 | 数量(千本) | 282 | 22 | 54 | 75 | 38 |
| | | | 金額(千円) | 11,986 | 1,014 | 1,875 | 2,620 | 1,580 |
| | | 茨城県産 | 数量(千本) | 59 | 0 | 0 | 12 | 5 |
| | | | 金額(千円) | 3,116 | 0 | 0 | 577 | 252 |
| | カトレア(切花) | 市場全体 | 数量(千本) | 1,629 | 117 | 138 | 156 | 144 |
| | | | 金額(千円) | 565,636 | 59,956 | 49,836 | 40,343 | 36,523 |
| | | 茨城県産 | 数量(千本) | 86 | 5 | 4 | 10 | 12 |
| | | | 金額(千円) | 29,110 | 2,213 | 1,415 | 2,891 | 3,191 |
| | ファレノプシス (切花) | 市場全体 | 数量(千本) | 612 | 39 | 68 | 94 | 84 |
| | | | 金額(千円) | 296,662 | 25,672 | 24,208 | 28,022 | 24,380 |
| | | 茨城県産 | 数量(千本) | 38 | 3 | 4 | 2 | 3 |
| | | | 金額(千円) | 23,777 | 2,238 | 1,548 | 564 | 903 |
| 宿根かすみ草 | 市場全体 | 数量(千本) | 15,160 | 1,273 | 1,395 | 1,683 | 1,772 | |
| | | 金額(千円) | 1,177,939 | 84,015 | 93,543 | 158,507 | 112,044 | |
| | 茨城県産 | 数量(千本) | 1 | 0 | 0 | 0 | 0 | |
| | | 金額(千円) | 44 | 0 | 0 | 0 | 0 | |
| アスター | 市場全体 | 数量(千本) | 5,123 | 124 | 149 | 177 | 187 | |
| | | 金額(千円) | 239,924 | 5,413 | 6,924 | 8,979 | 10,496 | |
| | 茨城県産 | 数量(千本) | 1,384 | 17 | 15 | 105 | 20 | |
| | | 金額(千円) | 63,204 | 978 | 661 | 5,503 | 1,426 | |
| アルストロメリア | 市場全体 | 数量(千本) | 16,067 | 1,519 | 1,489 | 2,147 | 2,906 | |
| | | 金額(千円) | 1,261,677 | 127,328 | 124,489 | 201,263 | 154,721 | |
| | 茨城県産 | 数量(千本) | 1,039 | 126 | 106 | 237 | 225 | |
| | | 金額(千円) | 60,931 | 6,912 | 6,217 | 16,915 | 7,646 | |
| カラ | 市場全体 | 数量(千本) | 7,734 | 538 | 725 | 1,026 | 1,232 | |
| | | 金額(千円) | 683,607 | 48,770 | 59,780 | 84,814 | 77,183 | |
| | 茨城県産 | 数量(千本) | 157 | 10 | 21 | 39 | 38 | |
| | | 金額(千円) | 8,125 | 684 | 1,086 | 2,339 | 1,295 | |
| ガベラ | 市場全体 | 数量(千本) | 48,869 | 3,546 | 4,284 | 6,303 | 5,874 | |
| | | 金額(千円) | 1,404,415 | 96,822 | 95,892 | 204,216 | 117,304 | |
| | 茨城県産 | 数量(千本) | 752 | 37 | 58 | 91 | 91 | |
| | | 金額(千円) | 18,722 | 1,014 | 1,346 | 2,907 | 1,815 | |
| カンパニュラ | 市場全体 | 数量(千本) | 893 | 41 | 42 | 81 | 167 | |
| | | 金額(千円) | 46,183 | 2,008 | 2,241 | 5,751 | 11,165 | |
| | 茨城県産 | 数量(千本) | 14 | 0 | 0 | 0 | 0 | |
| | | 金額(千円) | 610 | 0 | 0 | 0 | 0 | |
| 金魚草 | 市場全体 | 数量(千本) | 8,436 | 876 | 1,170 | 1,789 | 1,225 | |
| | | 金額(千円) | 459,792 | 59,087 | 72,680 | 106,873 | 51,321 | |
| | 茨城県産 | 数量(千本) | 51 | 9 | 13 | 5 | 2 | |
| | | 金額(千円) | 2,720 | 567 | 794 | 279 | 69 | |
| チューリップ | 市場全体 | 数量(千本) | 17,568 | 3,389 | 4,436 | 6,026 | 557 | |
| | | 金額(千円) | 1,085,043 | 215,822 | 269,763 | 377,342 | 33,653 | |
| | 茨城県産 | 数量(千本) | 730 | 154 | 187 | 149 | 41 | |
| | | 金額(千円) | 26,916 | 6,284 | 6,950 | 5,702 | 1,118 | |
| デルフィニューム | 市場全体 | 数量(千本) | 15,840 | 897 | 890 | 1,646 | 2,169 | |
| | | 金額(千円) | 1,323,740 | 87,669 | 95,087 | 194,261 | 159,250 | |
| | 茨城県産 | 数量(千本) | 136 | 7 | 6 | 21 | 41 | |
| | | 金額(千円) | 10,618 | 500 | 618 | 2,344 | 2,734 | |

| 5月 | 6月 | 7月 | 8月 | 9月 | 10月 | 11月 | 12月 | 年平均 単価 |
|---------|---------|--------|--------|---------|---------|---------|---------|-----------|
| 52 | 14 | 21 | 14 | 58 | 130 | 542 | 1,789 | 46 |
| 2,327 | 731 | 924 | 654 | 2,505 | 6,703 | 28,997 | 84,791 | |
| 0 | 0 | 0 | 0 | 0 | 0 | 342 | 1,009 | 52 |
| 0 | 0 | 0 | 0 | 0 | 19 | 18,811 | 48,983 | |
| 419 | 628 | 837 | 806 | 1,048 | 694 | 320 | 492 | 52 |
| 22,628 | 30,669 | 35,032 | 40,250 | 55,255 | 34,667 | 22,219 | 23,570 | |
| 260 | 551 | 361 | 243 | 495 | 518 | 62 | 0 | 45 |
| 13,137 | 26,541 | 12,541 | 9,778 | 20,705 | 24,250 | 3,998 | 0 | |
| 19 | 16 | 7 | 6 | 10 | 8 | 9 | 18 | 42 |
| 966 | 1,053 | 304 | 247 | 470 | 418 | 468 | 970 | |
| 9 | 11 | 3 | 1 | 10 | 7 | 1 | 0 | 53 |
| 547 | 698 | 102 | 35 | 441 | 408 | 45 | 11 | |
| 132 | 139 | 144 | 103 | 118 | 152 | 134 | 153 | 347 |
| 37,978 | 43,555 | 34,571 | 69,091 | 53,546 | 43,113 | 44,039 | 53,083 | |
| 3 | 1 | 10 | 4 | 6 | 6 | 10 | 14 | 340 |
| 1,117 | 395 | 2,454 | 3,365 | 3,219 | 1,588 | 2,900 | 4,362 | |
| 55 | 41 | 38 | 38 | 44 | 42 | 26 | 44 | 485 |
| 22,109 | 22,364 | 22,805 | 23,418 | 25,104 | 24,611 | 22,476 | 31,492 | |
| 3 | 3 | 6 | 5 | 4 | 1 | 1 | 3 | 633 |
| 1,407 | 2,194 | 4,400 | 3,848 | 2,619 | 900 | 1,283 | 1,874 | |
| 2,057 | 1,251 | 944 | 647 | 805 | 780 | 956 | 1,597 | 78 |
| 125,782 | 70,024 | 49,676 | 56,108 | 94,169 | 90,915 | 109,563 | 133,592 | |
| 0 | 1 | 0 | 0 | 0 | 0 | 0 | 0 | 64 |
| 0 | 44 | 0 | 0 | 0 | 0 | 0 | 0 | |
| 364 | 549 | 925 | 1,294 | 504 | 403 | 276 | 170 | 47 |
| 19,265 | 28,099 | 36,971 | 51,718 | 25,792 | 21,785 | 15,987 | 8,496 | |
| 16 | 87 | 456 | 493 | 41 | 84 | 29 | 22 | 46 |
| 1,074 | 4,263 | 17,637 | 21,228 | 2,143 | 4,872 | 1,891 | 1,528 | |
| 2,089 | 1,042 | 521 | 359 | 730 | 970 | 1,097 | 1,198 | 79 |
| 89,150 | 57,374 | 33,539 | 27,315 | 70,364 | 109,462 | 130,885 | 135,787 | |
| 72 | 43 | 1 | 3 | 31 | 48 | 67 | 80 | 59 |
| 1,800 | 1,300 | 16 | 219 | 2,249 | 4,387 | 6,478 | 6,790 | |
| 855 | 703 | 519 | 230 | 343 | 466 | 503 | 593 | 88 |
| 64,322 | 57,105 | 42,778 | 22,869 | 45,753 | 58,930 | 61,830 | 59,471 | |
| 26 | 7 | 6 | 0 | 0 | 1 | 3 | 6 | 52 |
| 1,048 | 300 | 282 | 23 | 53 | 172 | 376 | 468 | |
| 4,707 | 3,227 | 2,968 | 3,012 | 3,514 | 3,289 | 3,691 | 4,455 | 29 |
| 133,006 | 88,228 | 60,877 | 52,441 | 119,457 | 139,811 | 162,660 | 133,702 | |
| 97 | 80 | 69 | 50 | 45 | 38 | 47 | 48 | 25 |
| 2,278 | 1,853 | 1,089 | 795 | 1,277 | 1,366 | 1,724 | 1,259 | |
| 317 | 202 | 9 | 5 | 7 | 3 | 6 | 15 | 52 |
| 13,776 | 8,748 | 341 | 195 | 279 | 159 | 477 | 1,043 | |
| 5 | 9 | 0 | 0 | 0 | 0 | 0 | 0 | 43 |
| 269 | 341 | 0 | 0 | 0 | 0 | 0 | 0 | |
| 239 | 13 | 3 | 7 | 191 | 855 | 1,170 | 900 | 55 |
| 8,392 | 280 | 43 | 121 | 5,168 | 36,442 | 62,132 | 57,255 | |
| 0 | 0 | 0 | 0 | 0 | 2 | 14 | 6 | 53 |
| 0 | 0 | 0 | 0 | 0 | 61 | 656 | 295 | |
| 3 | 1 | 1 | 1 | 4 | 60 | 394 | 2,696 | 62 |
| 195 | 62 | 74 | 57 | 243 | 4,870 | 28,648 | 154,314 | |
| 0 | 0 | 0 | 0 | 0 | 0 | 85 | 115 | 37 |
| 0 | 0 | 0 | 0 | 0 | 0 | 3,414 | 3,448 | |
| 2,124 | 1,955 | 1,348 | 930 | 1,013 | 812 | 1,089 | 966 | 84 |
| 132,779 | 120,061 | 98,513 | 67,251 | 88,475 | 83,650 | 106,708 | 90,035 | |
| 26 | 9 | 0 | 0 | 0 | 0 | 5 | 22 | 78 |
| 1,511 | 366 | 4 | 5 | 0 | 6 | 462 | 2,066 | |

| 部類 | 項目 | | 品目 | 平成16年計 | 1月 | 2月 | 3月 | 4月 |
|--------|-------|--------|---------|---------|--------|--------|--------|--------|
| | | | | | | | | |
| 切 | りんどう | 市場全体 | 数量(千本) | 18,983 | 1 | 6 | 1 | 0 |
| | | | 金額(千円) | 815,259 | 96 | 676 | 73 | 9 |
| | | 茨城県産 | 数量(千本) | 9 | 0 | 0 | 0 | 0 |
| | | | 金額(千円) | 844 | 0 | 0 | 0 | 0 |
| | ひまわり | 市場全体 | 数量(千本) | 11,984 | 36 | 50 | 215 | 991 |
| | | | 金額(千円) | 527,462 | 1,342 | 2,072 | 9,495 | 36,632 |
| | | 茨城県産 | 数量(千本) | 592 | 3 | 3 | 11 | 84 |
| | | | 金額(千円) | 21,848 | 77 | 58 | 464 | 2,979 |
| | 花しょうぶ | 市場全体 | 数量(千本) | 1,864 | 0 | 2 | 16 | 954 |
| | | | 金額(千円) | 81,589 | 0 | 104 | 827 | 44,675 |
| | | 茨城県産 | 数量(千本) | 443 | 0 | 0 | 4 | 148 |
| | | | 金額(千円) | 20,526 | 0 | 0 | 36 | 7,764 |
| | しゃくやく | 市場全体 | 数量(千本) | 3,679 | 1 | 0 | 50 | 1,020 |
| | | | 金額(千円) | 226,528 | 312 | 28 | 5,772 | 70,175 |
| | | 茨城県産 | 数量(千本) | 121 | 0 | 0 | 0 | 9 |
| | | | 金額(千円) | 5,682 | 0 | 0 | 0 | 983 |
| | コスモス | 市場全体 | 数量(千本) | 3,332 | 73 | 79 | 82 | 92 |
| | | | 金額(千円) | 98,795 | 2,413 | 3,021 | 2,992 | 2,375 |
| | | 茨城県産 | 数量(千本) | 782 | 0 | 0 | 0 | 0 |
| | | | 金額(千円) | 13,538 | 0 | 0 | 0 | 0 |
| | くじゃく草 | 市場全体 | 数量(千本) | 7,481 | 164 | 184 | 264 | 346 |
| | | | 金額(千円) | 367,103 | 9,190 | 10,902 | 16,307 | 18,564 |
| | | 茨城県産 | 数量(千本) | 84 | 0 | 0 | 0 | 0 |
| | | | 金額(千円) | 3,073 | 0 | 0 | 0 | 0 |
| けいとう | 市場全体 | 数量(千本) | 8,472 | 5 | 2 | 4 | 6 | |
| | | 金額(千円) | 290,166 | 136 | 129 | 235 | 335 | |
| | 茨城県産 | 数量(千本) | 218 | 0 | 0 | 0 | 0 | |
| | | 金額(千円) | 6,965 | 0 | 0 | 0 | 0 | |
| なでしこ | 市場全体 | 数量(千本) | 4,564 | 178 | 243 | 377 | 799 | |
| | | 金額(千円) | 151,281 | 6,246 | 7,919 | 14,643 | 20,767 | |
| | 茨城県産 | 数量(千本) | 238 | 28 | 22 | 38 | 41 | |
| | | 金額(千円) | 9,420 | 1,243 | 966 | 1,818 | 1,703 | |
| アリュウム | 市場全体 | 数量(千本) | 1,945 | 156 | 279 | 223 | 303 | |
| | | 金額(千円) | 93,764 | 8,599 | 12,514 | 10,884 | 15,554 | |
| | 茨城県産 | 数量(千本) | 5 | 0 | 2 | 2 | 0 | |
| | | 金額(千円) | 932 | 0 | 385 | 503 | 0 | |
| リアトリス | 市場全体 | 数量(千本) | 2,307 | 25 | 51 | 291 | 156 | |
| | | 金額(千円) | 70,489 | 512 | 1,276 | 9,356 | 5,591 | |
| | 茨城県産 | 数量(千本) | 221 | 0 | 0 | 0 | 0 | |
| | | 金額(千円) | 5,211 | 0 | 0 | 0 | 0 | |
| ダリア | 市場全体 | 数量(千本) | 1,290 | 28 | 27 | 33 | 33 | |
| | | 金額(千円) | 87,935 | 1,806 | 2,169 | 2,695 | 2,902 | |
| | 茨城県産 | 数量(千本) | 46 | 0 | 0 | 0 | 0 | |
| | | 金額(千円) | 2,488 | 0 | 0 | 0 | 0 | |
| ブバルディア | 市場全体 | 数量(千本) | 2,689 | 111 | 144 | 136 | 218 | |
| | | 金額(千円) | 116,737 | 4,569 | 5,883 | 6,608 | 8,903 | |
| | 茨城県産 | 数量(千本) | 104 | 4 | 10 | 8 | 4 | |
| | | 金額(千円) | 4,643 | 213 | 464 | 398 | 118 | |
| 切枝 | アカシア | 市場全体 | 数量(千本) | 197 | 22 | 58 | 46 | 1 |
| | | 金額(千円) | 42,620 | 6,553 | 15,409 | 9,997 | 336 | |
| | 茨城県産 | 数量(千本) | 0 | 0 | 0 | 0 | 0 | |
| | | 金額(千円) | 71 | 37 | 33 | 0 | 0 | |
| アジサイ | 市場全体 | 数量(千本) | 311 | 20 | 16 | 26 | 12 | |
| | | 金額(千円) | 111,459 | 1,825 | 2,318 | 3,176 | 4,972 | |
| | 茨城県産 | 数量(千本) | 1 | 0 | 0 | 0 | 0 | |
| | | 金額(千円) | 170 | 0 | 0 | 0 | 0 | |

| 5月 | 6月 | 7月 | 8月 | 9月 | 10月 | 11月 | 12月 | 年平均 单值 |
|---------|---------|---------|---------|---------|--------|--------|--------|-----------|
| 25 | 754 | 3,652 | 5,162 | 7,701 | 1,624 | 57 | 0 | |
| 2,309 | 46,943 | 130,785 | 223,007 | 330,926 | 76,511 | 3,923 | 0 | 43 |
| 0 | 0 | 0 | 0 | 9 | 0 | 0 | 0 | |
| 0 | 0 | 0 | 0 | 844 | 0 | 0 | 0 | 94 |
| 1,750 | 2,622 | 2,602 | 1,910 | 1,167 | 382 | 194 | 67 | |
| 69,144 | 112,599 | 123,369 | 94,378 | 52,888 | 15,472 | 7,882 | 2,189 | 44 |
| 152 | 128 | 78 | 53 | 27 | 21 | 28 | 3 | |
| 5,485 | 4,712 | 2,857 | 1,978 | 1,074 | 909 | 1,119 | 135 | 37 |
| 746 | 146 | 0 | 0 | 0 | 0 | 0 | 0 | |
| 31,568 | 4,290 | 53 | 53 | 8 | 2 | 11 | 0 | 44 |
| 195 | 97 | 0 | 0 | 0 | 0 | 0 | 0 | |
| 9,478 | 3,147 | 44 | 51 | 7 | 0 | 0 | 0 | 46 |
| 2,149 | 417 | 11 | 0 | 0 | 0 | 16 | 16 | |
| 116,970 | 25,526 | 463 | 82 | 38 | 73 | 4,069 | 3,021 | 62 |
| 112 | 0 | 0 | 0 | 0 | 0 | 0 | 0 | |
| 4,699 | 0 | 0 | 0 | 0 | 0 | 0 | 0 | 47 |
| 63 | 105 | 70 | 219 | 1,195 | 1,000 | 278 | 77 | |
| 1,604 | 2,115 | 1,587 | 6,028 | 36,362 | 29,253 | 8,478 | 2,567 | 30 |
| 0 | 21 | 19 | 63 | 274 | 273 | 130 | 2 | |
| 0 | 191 | 205 | 1,116 | 4,947 | 4,984 | 2,042 | 52 | 17 |
| 766 | 543 | 442 | 440 | 1,501 | 1,251 | 1,015 | 562 | |
| 26,905 | 21,869 | 17,466 | 20,569 | 64,687 | 65,519 | 61,839 | 33,287 | 49 |
| 0 | 0 | 18 | 0 | 42 | 10 | 12 | 2 | |
| 0 | 5 | 523 | 0 | 1,392 | 334 | 703 | 115 | 36 |
| 55 | 414 | 1,404 | 2,214 | 2,914 | 963 | 354 | 138 | |
| 2,065 | 14,450 | 38,842 | 63,447 | 111,377 | 39,226 | 14,533 | 5,392 | 34 |
| 4 | 28 | 20 | 53 | 83 | 29 | 2 | 0 | |
| 109 | 946 | 437 | 1,397 | 3,066 | 975 | 35 | 0 | 32 |
| 546 | 456 | 462 | 445 | 352 | 313 | 243 | 148 | |
| 16,233 | 16,920 | 13,713 | 15,007 | 14,148 | 12,035 | 8,534 | 5,116 | 33 |
| 19 | 8 | 25 | 0 | 12 | 25 | 11 | 11 | |
| 663 | 193 | 796 | 3 | 320 | 820 | 430 | 465 | 40 |
| 435 | 329 | 80 | 0 | 2 | 21 | 18 | 98 | |
| 22,750 | 14,521 | 2,367 | 0 | 10 | 640 | 693 | 5,231 | 48 |
| 1 | 0 | 0 | 0 | 0 | 0 | 0 | 0 | |
| 44 | 0 | 0 | 0 | 0 | 0 | 0 | 0 | 202 |
| 186 | 474 | 893 | 161 | 8 | 0 | 3 | 60 | |
| 7,146 | 15,410 | 24,531 | 4,466 | 252 | 8 | 126 | 1,815 | 31 |
| 0 | 119 | 101 | 0 | 0 | 0 | 0 | 0 | |
| 0 | 2,704 | 2,506 | 0 | 0 | 0 | 0 | 0 | 24 |
| 49 | 171 | 130 | 49 | 181 | 478 | 92 | 18 | |
| 6,321 | 10,136 | 8,535 | 3,953 | 11,752 | 28,682 | 6,720 | 2,264 | 68 |
| 0 | 5 | 6 | 0 | 3 | 30 | 2 | 0 | |
| 0 | 182 | 404 | 7 | 142 | 1,643 | 109 | 0 | 54 |
| 388 | 318 | 223 | 158 | 211 | 273 | 308 | 203 | |
| 13,907 | 12,699 | 8,783 | 6,877 | 10,792 | 14,180 | 15,005 | 8,531 | 43 |
| 13 | 13 | 16 | 5 | 14 | 9 | 5 | 2 | |
| 548 | 562 | 627 | 132 | 733 | 508 | 292 | 50 | 45 |
| 0 | 1 | 1 | 1 | 3 | 14 | 35 | 13 | |
| 60 | 409 | 432 | 216 | 612 | 1,886 | 3,423 | 3,286 | 217 |
| 0 | 0 | 0 | 0 | 0 | 0 | 0 | 0 | |
| 0 | 0 | 0 | 0 | 0 | 0 | 0 | 0 | 7,852 |
| 45 | 74 | 18 | 19 | 31 | 37 | 10 | 4 | |
| 12,395 | 15,473 | 9,038 | 8,064 | 14,796 | 19,288 | 12,990 | 7,123 | 358 |
| 0 | 0 | 0 | 0 | 0 | 0 | 0 | 0 | |
| 0 | 135 | 6 | 0 | 11 | 13 | 4 | 0 | 126 |

| 部類 | 項目 | | 品目 | 平成16年計 | 1月 | 2月 | 3月 | 4月 | |
|----|-------|--------|---------|---------|---------|---------|--------|--------|--------|
| | | | | | | | | | |
| 切 | こ | で | ま | 数量(千本) | 806 | 122 | 203 | 290 | 141 |
| | | | | 金額(千円) | 162,382 | 32,106 | 43,369 | 63,337 | 21,176 |
| | | り | 市場全体 | 数量(千本) | 32 | 0 | 0 | 0 | 0 |
| | | | | 金額(千円) | 627 | 0 | 109 | 0 | 18 |
| | さ | か | き | 数量(千本) | 2,320 | 167 | 153 | 194 | 170 |
| | | | | 金額(千円) | 388,055 | 27,682 | 28,043 | 30,905 | 29,568 |
| | | 市場全体 | 数量(千本) | 285 | 20 | 21 | 27 | 25 | |
| | | | 金額(千円) | 72,828 | 5,026 | 5,596 | 6,243 | 6,122 | |
| | し | き | み | 数量(千本) | 72 | 3 | 3 | 7 | 4 |
| | | | | 金額(千円) | 65,769 | 3,853 | 3,695 | 6,278 | 4,458 |
| | | 市場全体 | 数量(千本) | 1 | 0 | 0 | 0 | 0 | |
| | | | 金額(千円) | 1,707 | 12 | 6 | 110 | 37 | |
| | 千 | 両 | 両 | 数量(千本) | 4,001 | 0 | 0 | 0 | 0 |
| | | | | 金額(千円) | 425,880 | 14 | 0 | 0 | 0 |
| | | 市場全体 | 数量(千本) | 2,371 | 0 | 0 | 0 | 0 | |
| | | | 金額(千円) | 217,511 | 2 | 0 | 0 | 0 | |
| | ど | う | だ | 数量(千本) | 400 | 0 | 1 | 6 | 35 |
| | | | | 金額(千円) | 133,371 | 3 | 478 | 2,094 | 12,941 |
| | | 市場全体 | 数量(千本) | 14 | 0 | 0 | 0 | 1 | |
| | | | 金額(千円) | 11,266 | 0 | 376 | 512 | 1,439 | |
| 桃 | 桃 | 桃 | 数量(千本) | 882 | 12 | 786 | 83 | 2 | |
| | | | 金額(千円) | 183,870 | 2,402 | 159,501 | 21,683 | 159 | |
| | 市場全体 | 数量(千本) | 71 | 1 | 66 | 4 | 0 | | |
| | | 金額(千円) | 12,569 | 146 | 11,258 | 1,165 | 0 | | |
| 柳 | 柳 | 柳 | 数量(千本) | 1,101 | 98 | 58 | 36 | 14 | |
| | | | 金額(千円) | 121,322 | 7,830 | 5,567 | 5,099 | 2,495 | |
| | 市場全体 | 数量(千本) | 694 | 43 | 29 | 17 | 11 | | |
| | | 金額(千円) | 68,916 | 3,522 | 2,772 | 2,833 | 1,899 | | |
| 雪 | 雪 | 柳 | 数量(千本) | 1,275 | 214 | 262 | 325 | 18 | |
| | | | 金額(千円) | 115,791 | 24,219 | 24,465 | 24,423 | 1,407 | |
| | 市場全体 | 数量(千本) | 391 | 58 | 87 | 95 | 0 | | |
| | | 金額(千円) | 35,203 | 10,032 | 8,462 | 7,192 | 11 | | |
| 松 | (束物) | (束物) | 数量(千本) | 2,547 | 31 | 28 | 74 | 28 | |
| | | | 金額(千円) | 157,154 | 1,901 | 1,599 | 3,782 | 1,602 | |
| | 市場全体 | 数量(千本) | 1,936 | 12 | 8 | 55 | 8 | | |
| | | 金額(千円) | 118,828 | 796 | 489 | 2,679 | 485 | | |
| 松 | (一本物) | (一本物) | 数量(千本) | 3,107 | 10 | 8 | 8 | 8 | |
| | | | 金額(千円) | 267,886 | 1,036 | 478 | 508 | 496 | |
| | 市場全体 | 数量(千本) | 2,540 | 3 | 1 | 1 | 1 | | |
| | | 金額(千円) | 199,220 | 626 | 110 | 76 | 129 | | |
| ユ | カリ | カリ | 数量(千本) | 1,003 | 76 | 101 | 128 | 53 | |
| | | | 金額(千円) | 168,381 | 12,236 | 14,424 | 18,888 | 9,913 | |
| | 市場全体 | 数量(千本) | 7 | 0 | 0 | 0 | 0 | | |
| | | 金額(千円) | 784 | 14 | 22 | 65 | 104 | | |
| 梅 | 梅 | 梅 | 数量(千本) | 153 | 16 | 9 | 5 | 6 | |
| | | | 金額(千円) | 45,885 | 4,145 | 1,997 | 309 | 211 | |
| | 市場全体 | 数量(千本) | 9 | 0 | 0 | 0 | 0 | | |
| | | 金額(千円) | 2,687 | 115 | 155 | 44 | 0 | | |
| 梅 | も | ど | 数量(千本) | 16 | 0 | 0 | 0 | 0 | |
| | | | 金額(千円) | 11,822 | 3 | 0 | 0 | 0 | |
| | 市場全体 | 数量(千本) | 0 | 0 | 0 | 0 | 0 | | |
| | | 金額(千円) | 69 | 0 | 0 | 0 | 0 | | |
| 切 | なる | こ | 数量(千本) | 2,154 | 0 | 30 | 113 | 380 | |
| | | | 金額(千円) | 58,832 | 0 | 1,942 | 5,645 | 12,141 | |
| | 市場全体 | 数量(千本) | 89 | 0 | 0 | 0 | 6 | | |
| | | 金額(千円) | 2,413 | 0 | 0 | 0 | 351 | | |

| 5月 | 6月 | 7月 | 8月 | 9月 | 10月 | 11月 | 12月 | 年平均 単価 |
|--------|--------|--------|--------|--------|--------|--------|---------|-----------|
| 3 | 0 | 8 | 14 | 15 | 10 | 1 | 0 | |
| 120 | 1 | 133 | 585 | 897 | 599 | 58 | 2 | 202 |
| 0 | 0 | 7 | 11 | 12 | 1 | 0 | 0 | |
| 4 | 0 | 100 | 171 | 194 | 30 | 0 | 2 | 20 |
| 172 | 188 | 194 | 190 | 192 | 186 | 175 | 339 | |
| 32,517 | 31,128 | 31,782 | 32,772 | 33,271 | 31,109 | 28,625 | 50,653 | 167 |
| 21 | 24 | 25 | 22 | 21 | 20 | 22 | 36 | |
| 6,222 | 5,916 | 5,936 | 6,084 | 6,203 | 5,523 | 5,545 | 8,414 | 255 |
| 4 | 4 | 10 | 8 | 10 | 5 | 6 | 9 | |
| 5,234 | 5,523 | 5,646 | 7,734 | 8,051 | 4,594 | 4,188 | 6,515 | 917 |
| 0 | 0 | 0 | 0 | 0 | 0 | 0 | 0 | |
| 79 | 272 | 178 | 524 | 453 | 0 | 1 | 35 | 2,092 |
| 0 | 0 | 0 | 0 | 0 | 0 | 1 | 3,999 | |
| 0 | 0 | 1 | 0 | 20 | 16 | 162 | 425,666 | 106 |
| 0 | 0 | 0 | 0 | 0 | 0 | 0 | 2,371 | |
| 0 | 0 | 1 | 0 | 20 | 13 | 43 | 217,431 | 92 |
| 61 | 71 | 54 | 56 | 53 | 47 | 16 | 0 | |
| 20,034 | 19,462 | 18,763 | 17,981 | 16,396 | 18,040 | 7,164 | 14 | 334 |
| 4 | 2 | 1 | 1 | 1 | 2 | 0 | 0 | |
| 2,121 | 1,703 | 1,007 | 961 | 1,425 | 1,386 | 335 | 0 | 830 |
| 0 | 0 | 0 | 0 | 0 | 0 | 0 | 0 | |
| 0 | 54 | 49 | 0 | 0 | 0 | 0 | 22 | 208 |
| 0 | 0 | 0 | 0 | 0 | 0 | 0 | 0 | |
| 0 | 0 | 0 | 0 | 0 | 0 | 0 | 0 | 177 |
| 13 | 10 | 26 | 39 | 98 | 196 | 214 | 298 | |
| 1,747 | 1,953 | 5,831 | 7,287 | 13,434 | 20,558 | 17,392 | 32,130 | 110 |
| 6 | 6 | 23 | 33 | 77 | 128 | 127 | 194 | |
| 861 | 1,508 | 5,186 | 6,185 | 9,335 | 11,189 | 9,232 | 14,396 | 99 |
| 6 | 41 | 64 | 62 | 77 | 88 | 63 | 56 | |
| 1,338 | 3,075 | 4,422 | 4,320 | 6,571 | 8,272 | 5,136 | 8,144 | 91 |
| 2 | 30 | 41 | 40 | 15 | 4 | 1 | 18 | |
| 307 | 1,065 | 1,385 | 1,430 | 842 | 444 | 26 | 4,008 | 90 |
| 27 | 27 | 27 | 28 | 28 | 28 | 30 | 2,191 | |
| 1,557 | 1,591 | 1,562 | 1,609 | 1,653 | 1,816 | 1,871 | 136,611 | 62 |
| 8 | 8 | 8 | 8 | 8 | 8 | 10 | 1,796 | |
| 462 | 490 | 457 | 486 | 511 | 598 | 709 | 110,665 | 61 |
| 8 | 7 | 8 | 8 | 9 | 11 | 11 | 3,011 | |
| 522 | 431 | 439 | 555 | 583 | 1,417 | 1,317 | 260,105 | 86 |
| 1 | 1 | 1 | 1 | 1 | 2 | 2 | 2,525 | |
| 106 | 94 | 123 | 167 | 169 | 330 | 314 | 196,976 | 78 |
| 34 | 25 | 32 | 38 | 114 | 144 | 154 | 105 | |
| 7,208 | 5,713 | 6,363 | 7,327 | 18,216 | 24,191 | 25,671 | 18,231 | 168 |
| 0 | 1 | 0 | 0 | 0 | 0 | 1 | 3 | |
| 11 | 61 | 17 | 20 | 34 | 161 | 137 | 139 | 119 |
| 0 | 0 | 0 | 0 | 0 | 0 | 0 | 116 | |
| 25 | 0 | 0 | 11 | 131 | 5 | 45 | 39,005 | 300 |
| 0 | 0 | 0 | 0 | 0 | 0 | 0 | 9 | |
| 6 | 0 | 0 | 0 | 0 | 0 | 0 | 2,368 | 289 |
| 0 | 0 | 0 | 0 | 2 | 8 | 5 | 0 | |
| 0 | 5 | 5 | 2 | 1,918 | 6,203 | 3,316 | 371 | 747 |
| 0 | 0 | 0 | 0 | 0 | 0 | 0 | 0 | |
| 0 | 0 | 0 | 0 | 16 | 32 | 21 | 1 | 1,578 |
| 647 | 445 | 257 | 126 | 84 | 54 | 17 | 0 | |
| 12,600 | 10,025 | 7,090 | 4,055 | 3,140 | 1,979 | 204 | 11 | 27 |
| 74 | 9 | 0 | 0 | 0 | 0 | 0 | 0 | |
| 1,916 | 146 | 0 | 0 | 0 | 0 | 0 | 0 | 27 |

| 部類 | 項目 | | 品目 | 平成16年計 | 1月 | 2月 | 3月 | 4月 |
|----------------|---------|--------|---------|-----------|--------|--------|--------|-------|
| | | | | | | | | |
| 鉢 | ポットマム | 市場全体 | 数量(千本) | 287 | 5 | 2 | 1 | 3 |
| | | | 金額(千円) | 83,474 | 784 | 422 | 453 | 1,155 |
| | | 茨城県産 | 数量(千本) | 24 | 0 | 0 | 0 | 0 |
| | | | 金額(千円) | 6,848 | 22 | 0 | 0 | 0 |
| | シクラメン | 市場全体 | 数量(千本) | 1,696 | 44 | 3 | 0 | 0 |
| | | | 金額(千円) | 1,270,605 | 12,355 | 533 | 43 | 0 |
| | | 茨城県産 | 数量(千本) | 139 | 3 | 0 | 0 | 0 |
| | | | 金額(千円) | 109,268 | 826 | 38 | 0 | 0 |
| | ミニシクラメン | 市場全体 | 数量(千本) | 1,044 | 47 | 10 | 1 | 0 |
| | | | 金額(千円) | 257,490 | 5,368 | 832 | 62 | 4 |
| | | 茨城県産 | 数量(千本) | 30 | 1 | 0 | 0 | 0 |
| | | | 金額(千円) | 7,351 | 201 | 22 | 3 | 0 |
| | オブコニカ | 市場全体 | 数量(千本) | 180 | 81 | 34 | 9 | 1 |
| | | | 金額(千円) | 34,304 | 15,247 | 5,253 | 1,868 | 162 |
| | | 茨城県産 | 数量(千本) | 62 | 28 | 10 | 4 | 1 |
| | | | 金額(千円) | 11,666 | 5,530 | 1,602 | 855 | 127 |
| | ジュリアン | 市場全体 | 数量(千本) | 548 | 161 | 106 | 24 | 0 |
| | | | 金額(千円) | 66,770 | 17,460 | 13,088 | 3,113 | 0 |
| | | 茨城県産 | 数量(千本) | 54 | 14 | 13 | 3 | 0 |
| | | | 金額(千円) | 5,388 | 1,246 | 1,566 | 267 | 0 |
| ポリアンタ | 市場全体 | 数量(千本) | 446 | 171 | 110 | 25 | 0 | |
| | | 金額(千円) | 60,496 | 20,816 | 14,082 | 3,649 | 12 | |
| | 茨城県産 | 数量(千本) | 42 | 14 | 19 | 7 | 0 | |
| | | 金額(千円) | 5,056 | 1,268 | 2,376 | 1,130 | 0 | |
| エラチオール ベゴニア | 市場全体 | 数量(千本) | 893 | 56 | 57 | 82 | 120 | |
| | | 金額(千円) | 311,103 | 21,115 | 20,801 | 31,978 | 42,347 | |
| | 茨城県産 | 数量(千本) | 57 | 3 | 3 | 7 | 16 | |
| | | 金額(千円) | 19,948 | 1,044 | 1,074 | 2,850 | 5,263 | |
| センパ フローレンス | 市場全体 | 数量(千本) | 368 | 0 | 1 | 30 | 91 | |
| | | 金額(千円) | 21,921 | 1 | 98 | 2,005 | 5,730 | |
| | 茨城県産 | 数量(千本) | 17 | 0 | 0 | 0 | 1 | |
| | | 金額(千円) | 733 | 0 | 0 | 0 | 73 | |
| インパチエンス | 市場全体 | 数量(千本) | 404 | 0 | 1 | 18 | 103 | |
| | | 金額(千円) | 91,357 | 42 | 363 | 5,080 | 27,581 | |
| | 茨城県産 | 数量(千本) | 43 | 0 | 0 | 2 | 12 | |
| | | 金額(千円) | 10,936 | 0 | 182 | 717 | 4,065 | |
| カーネーション | 市場全体 | 数量(千本) | 1,149 | 0 | 0 | 3 | 255 | |
| | | 金額(千円) | 472,043 | 0 | 8 | 406 | 78,044 | |
| | 茨城県産 | 数量(千本) | 296 | 0 | 0 | 0 | 68 | |
| | | 金額(千円) | 142,133 | 0 | 0 | 11 | 24,516 | |
| クレマチス | 市場全体 | 数量(千本) | 206 | 1 | 15 | 44 | 66 | |
| | | 金額(千円) | 158,126 | 638 | 9,177 | 31,277 | 47,220 | |
| | 茨城県産 | 数量(千本) | 56 | 0 | 6 | 15 | 15 | |
| | | 金額(千円) | 48,157 | 0 | 4,685 | 10,404 | 11,706 | |
| エリカ | 市場全体 | 数量(千本) | 299 | 70 | 35 | 14 | 8 | |
| | | 金額(千円) | 86,172 | 21,378 | 10,412 | 3,539 | 1,551 | |
| | 茨城県産 | 数量(千本) | 2 | 0 | 0 | 0 | 0 | |
| | | 金額(千円) | 1,405 | 116 | 10 | 0 | 0 | |
| サイネリア | 市場全体 | 数量(千本) | 626 | 98 | 175 | 247 | 6 | |
| | | 金額(千円) | 144,847 | 23,784 | 40,821 | 59,904 | 845 | |
| | 茨城県産 | 数量(千本) | 132 | 20 | 24 | 44 | 0 | |
| | | 金額(千円) | 28,120 | 5,376 | 5,188 | 9,460 | 34 | |
| ゼラニウム | 市場全体 | 数量(千本) | 880 | 36 | 87 | 176 | 189 | |
| | | 金額(千円) | 187,166 | 7,514 | 21,226 | 39,454 | 45,124 | |
| | 茨城県産 | 数量(千本) | 116 | 10 | 14 | 13 | 20 | |
| | | 金額(千円) | 36,074 | 3,036 | 5,472 | 5,015 | 6,205 | |

鉢

花

| 5月 | 6月 | 7月 | 8月 | 9月 | 10月 | 11月 | 12月 | 年平均 単価 |
|---------|--------|--------|--------|--------|--------|---------|---------|-----------|
| 2 | 2 | 14 | 46 | 86 | 82 | 38 | 7 | |
| 645 | 657 | 4,304 | 14,073 | 28,548 | 23,193 | 7,952 | 1,287 | 291 |
| 0 | 0 | 0 | 3 | 4 | 6 | 9 | 2 | |
| 0 | 0 | 0 | 1,212 | 1,540 | 1,770 | 1,856 | 447 | 290 |
| 0 | 0 | 0 | 1 | 22 | 144 | 582 | 900 | |
| 3 | 0 | 4 | 169 | 5,168 | 56,647 | 415,507 | 780,176 | 749 |
| 0 | 0 | 0 | 0 | 0 | 4 | 45 | 87 | |
| 0 | 0 | 0 | 0 | 100 | 1,389 | 30,945 | 75,970 | 786 |
| 1 | 0 | 0 | 3 | 69 | 253 | 344 | 316 | |
| 19 | 0 | 9 | 536 | 15,346 | 57,512 | 91,209 | 86,594 | 247 |
| 0 | 0 | 0 | 0 | 1 | 6 | 12 | 10 | |
| 0 | 0 | 0 | 0 | 114 | 1,253 | 3,588 | 2,169 | 246 |
| 0 | 0 | 0 | 0 | 2 | 10 | 13 | 30 | |
| 0 | 0 | 0 | 0 | 355 | 2,247 | 2,729 | 6,444 | 191 |
| 0 | 0 | 0 | 0 | 0 | 0 | 4 | 14 | |
| 0 | 0 | 0 | 0 | 0 | 13 | 741 | 2,797 | 188 |
| 0 | 0 | 0 | 0 | 0 | 47 | 91 | 119 | |
| 0 | 0 | 0 | 0 | 0 | 6,098 | 11,606 | 15,406 | 122 |
| 0 | 0 | 0 | 0 | 0 | 0 | 2 | 23 | |
| 0 | 0 | 0 | 0 | 0 | 6 | 189 | 2,114 | 99 |
| 0 | 0 | 0 | 0 | 0 | 7 | 42 | 91 | |
| 2 | 0 | 0 | 0 | 0 | 1,008 | 6,574 | 14,353 | 136 |
| 0 | 0 | 0 | 0 | 0 | 0 | 0 | 2 | |
| 0 | 0 | 0 | 0 | 0 | 5 | 5 | 272 | 120 |
| 135 | 84 | 41 | 11 | 64 | 87 | 81 | 75 | |
| 52,879 | 23,898 | 11,967 | 4,840 | 21,378 | 28,283 | 27,435 | 24,181 | 348 |
| 16 | 3 | 1 | 0 | 1 | 3 | 2 | 2 | |
| 6,227 | 656 | 291 | 76 | 674 | 817 | 500 | 475 | 351 |
| 76 | 77 | 29 | 16 | 34 | 13 | 1 | 0 | |
| 4,865 | 4,186 | 1,463 | 852 | 2,097 | 582 | 42 | 0 | 60 |
| 5 | 5 | 3 | 0 | 1 | 1 | 0 | 0 | |
| 267 | 226 | 53 | 1 | 72 | 41 | 0 | 0 | 44 |
| 104 | 113 | 55 | 6 | 3 | 1 | 0 | 0 | |
| 24,118 | 22,050 | 10,726 | 856 | 380 | 117 | 26 | 19 | 226 |
| 14 | 12 | 2 | 0 | 0 | 0 | 0 | 0 | |
| 3,134 | 2,420 | 371 | 21 | 5 | 0 | 17 | 4 | 253 |
| 888 | 2 | 1 | 1 | 0 | 0 | 0 | 0 | |
| 392,696 | 429 | 276 | 104 | 28 | 25 | 0 | 25 | 411 |
| 227 | 1 | 0 | 0 | 0 | 0 | 0 | 0 | |
| 116,939 | 414 | 253 | 0 | 0 | 0 | 0 | 0 | 479 |
| 63 | 5 | 1 | 0 | 0 | 3 | 4 | 2 | |
| 62,405 | 2,773 | 332 | 147 | 351 | 1,399 | 1,525 | 881 | 769 |
| 19 | 0 | 0 | 0 | 0 | 0 | 1 | 0 | |
| 20,876 | 39 | 0 | 0 | 0 | 20 | 375 | 53 | 859 |
| 3 | 1 | 1 | 4 | 29 | 31 | 36 | 69 | |
| 762 | 164 | 59 | 722 | 7,204 | 9,429 | 10,796 | 20,157 | 288 |
| 0 | 0 | 0 | 0 | 0 | 1 | 1 | 0 | |
| 0 | 0 | 0 | 0 | 0 | 616 | 621 | 42 | 841 |
| 0 | 0 | 0 | 0 | 0 | 7 | 24 | 70 | |
| 0 | 0 | 0 | 0 | 0 | 1,169 | 3,953 | 14,370 | 231 |
| 0 | 0 | 0 | 0 | 0 | 1 | 14 | 29 | |
| 0 | 0 | 0 | 0 | 0 | 185 | 2,430 | 5,446 | 213 |
| 103 | 72 | 20 | 9 | 44 | 63 | 50 | 30 | |
| 20,643 | 10,698 | 2,342 | 1,546 | 8,786 | 12,805 | 11,319 | 5,710 | 213 |
| 5 | 4 | 2 | 1 | 6 | 19 | 14 | 8 | |
| 1,469 | 749 | 205 | 333 | 1,849 | 5,354 | 4,728 | 1,660 | 311 |

| 部類 | 項目 | | 品目 | 平成16年計 | 1月 | 2月 | 3月 | 4月 |
|----------|---------|--------|---------|--------|--------|--------|--------|--------|
| | | | | | | | | |
| 鉢 花 | セントポーリア | 市場全体 | 数量(千本) | 278 | 22 | 14 | 35 | 43 |
| | | | 金額(千円) | 44,831 | 2,687 | 2,209 | 6,141 | 7,091 |
| | | 茨城県産 | 数量(千本) | 19 | 2 | 2 | 2 | 2 |
| | | | 金額(千円) | 2,839 | 227 | 356 | 368 | 310 |
| | 日 々 草 | 市場全体 | 数量(千本) | 58 | 0 | 0 | 0 | 2 |
| | | | 金額(千円) | 13,941 | 2 | 0 | 24 | 719 |
| | | 茨城県産 | 数量(千本) | 5 | 0 | 0 | 0 | 0 |
| | | | 金額(千円) | 856 | 0 | 0 | 0 | 0 |
| | ベルフラワー | 市場全体 | 数量(千本) | 191 | 3 | 18 | 69 | 65 |
| | | | 金額(千円) | 37,573 | 809 | 5,091 | 16,099 | 10,617 |
| | | 茨城県産 | 数量(千本) | 39 | 0 | 8 | 21 | 7 |
| | | | 金額(千円) | 10,677 | 191 | 2,982 | 6,064 | 1,287 |
| | ほ う ず き | 市場全体 | 数量(千本) | 21 | 0 | 0 | 0 | 0 |
| | | | 金額(千円) | 7,742 | 0 | 0 | 0 | 6 |
| | | 茨城県産 | 数量(千本) | 1 | 0 | 0 | 0 | 0 |
| | | | 金額(千円) | 511 | 0 | 0 | 0 | 0 |
| | ランキュラス | 市場全体 | 数量(千本) | 113 | 18 | 41 | 47 | 6 |
| | | | 金額(千円) | 26,200 | 4,497 | 9,339 | 10,946 | 1,025 |
| | | 茨城県産 | 数量(千本) | 1 | 0 | 0 | 0 | 0 |
| | | | 金額(千円) | 85 | 26 | 59 | 0 | 0 |
| りんどう | 市場全体 | 数量(千本) | 240 | 0 | 0 | 0 | 1 | |
| | | 金額(千円) | 80,557 | 0 | 0 | 2 | 98 | |
| | 茨城県産 | 数量(千本) | 1 | 0 | 0 | 0 | 0 | |
| | | 金額(千円) | 208 | 0 | 0 | 0 | 13 | |
| カラコエ | 市場全体 | 数量(千本) | 909 | 72 | 90 | 82 | 74 | |
| | | 金額(千円) | 158,432 | 12,480 | 17,525 | 12,875 | 12,480 | |
| | 茨城県産 | 数量(千本) | 27 | 5 | 7 | 6 | 0 | |
| | | 金額(千円) | 6,536 | 1,643 | 2,365 | 629 | 26 | |
| シャコバサボテン | 市場全体 | 数量(千本) | 368 | 0 | 1 | 5 | 1 | |
| | | 金額(千円) | 163,342 | 67 | 257 | 1,061 | 191 | |
| | 茨城県産 | 数量(千本) | 100 | 0 | 0 | 0 | 0 | |
| | | 金額(千円) | 32,519 | 28 | 20 | 16 | 24 | |
| アザレア | 市場全体 | 数量(千本) | 407 | 24 | 46 | 82 | 32 | |
| | | 金額(千円) | 99,531 | 6,894 | 13,112 | 18,786 | 5,709 | |
| | 茨城県産 | 数量(千本) | 0 | 0 | 0 | 0 | 0 | |
| | | 金額(千円) | 42 | 0 | 26 | 0 | 0 | |
| のぼたん | 市場全体 | 数量(千本) | 149 | 0 | 1 | 2 | 16 | |
| | | 金額(千円) | 34,601 | 54 | 321 | 418 | 3,175 | |
| | 茨城県産 | 数量(千本) | 9 | 0 | 0 | 0 | 1 | |
| | | 金額(千円) | 1,160 | 34 | 80 | 32 | 129 | |
| ハイビスカス | 市場全体 | 数量(千本) | 552 | 0 | 0 | 0 | 14 | |
| | | 金額(千円) | 192,138 | 18 | 33 | 205 | 5,312 | |
| | 茨城県産 | 数量(千本) | 57 | 0 | 0 | 0 | 0 | |
| | | 金額(千円) | 11,570 | 0 | 26 | 73 | 21 | |
| ブーゲンビリア | 市場全体 | 数量(千本) | 177 | 1 | 2 | 5 | 31 | |
| | | 金額(千円) | 130,736 | 281 | 614 | 2,906 | 24,724 | |
| | 茨城県産 | 数量(千本) | 0 | 0 | 0 | 0 | 0 | |
| | | 金額(千円) | 62 | 0 | 0 | 6 | 0 | |
| ポインセチア | 市場全体 | 数量(千本) | 1,390 | 0 | 0 | 0 | 1 | |
| | | 金額(千円) | 479,202 | 180 | 0 | 55 | 384 | |
| | 茨城県産 | 数量(千本) | 274 | 0 | 0 | 0 | 0 | |
| | | 金額(千円) | 97,790 | 0 | 0 | 0 | 0 | |

| 5月 | 6月 | 7月 | 8月 | 9月 | 10月 | 11月 | 12月 | 年平均 単価 |
|--------|--------|--------|--------|--------|--------|---------|---------|-----------|
| 36 | 18 | 8 | 3 | 30 | 25 | 23 | 23 | 161 |
| 6,424 | 2,338 | 955 | 523 | 5,031 | 4,244 | 3,813 | 3,376 | |
| 3 | 2 | 0 | 0 | 0 | 2 | 0 | 2 | 149 |
| 514 | 219 | 8 | 0 | 64 | 306 | 61 | 404 | |
| 6 | 16 | 19 | 10 | 5 | 0 | 0 | 0 | 242 |
| 1,800 | 4,250 | 3,877 | 1,433 | 1,810 | 24 | 0 | 0 | |
| 0 | 0 | 2 | 2 | 0 | 0 | 0 | 0 | 175 |
| 11 | 44 | 450 | 348 | 2 | 0 | 0 | 0 | |
| 37 | 0 | 0 | 0 | 0 | 0 | 0 | 0 | 196 |
| 4,943 | 9 | 0 | 0 | 0 | 0 | 0 | 5 | |
| 2 | 0 | 0 | 0 | 0 | 0 | 0 | 0 | 275 |
| 154 | 0 | 0 | 0 | 0 | 0 | 0 | 0 | |
| 1 | 7 | 12 | 0 | 0 | 0 | 0 | 0 | 377 |
| 132 | 2,445 | 5,119 | 39 | 0 | 0 | 0 | 0 | |
| 1 | 0 | 0 | 0 | 0 | 0 | 0 | 0 | 359 |
| 27 | 188 | 296 | 0 | 0 | 0 | 0 | 0 | |
| 0 | 0 | 0 | 0 | 0 | 0 | 0 | 1 | 232 |
| 0 | 0 | 0 | 0 | 0 | 0 | 0 | 393 | |
| 0 | 0 | 0 | 0 | 0 | 0 | 0 | 0 | 161 |
| 0 | 0 | 0 | 0 | 0 | 0 | 0 | 0 | |
| 1 | 6 | 11 | 47 | 148 | 26 | 1 | 0 | 335 |
| 123 | 920 | 4,905 | 18,389 | 51,722 | 4,240 | 159 | 0 | |
| 0 | 0 | 0 | 0 | 1 | 0 | 0 | 0 | 182 |
| 0 | 2 | 4 | 20 | 170 | 0 | 0 | 0 | |
| 75 | 69 | 68 | 52 | 142 | 82 | 55 | 48 | 174 |
| 13,827 | 9,269 | 7,441 | 8,698 | 28,039 | 15,944 | 10,986 | 8,868 | |
| 0 | 4 | 1 | 0 | 3 | 0 | 1 | 1 | 244 |
| 2 | 472 | 61 | 26 | 473 | 2 | 491 | 346 | |
| 0 | 1 | 0 | 33 | 106 | 109 | 94 | 17 | 444 |
| 90 | 42 | 14 | 14,420 | 47,409 | 47,796 | 41,561 | 10,434 | |
| 0 | 0 | 0 | 2 | 32 | 33 | 28 | 4 | 327 |
| 0 | 0 | 5 | 662 | 11,955 | 10,842 | 7,719 | 1,249 | |
| 2 | 0 | 0 | 6 | 39 | 60 | 78 | 36 | 245 |
| 202 | 23 | 0 | 2,393 | 11,567 | 16,320 | 16,179 | 8,348 | |
| 0 | 0 | 0 | 0 | 0 | 0 | 0 | 0 | 252 |
| 0 | 0 | 0 | 0 | 0 | 0 | 17 | 0 | |
| 15 | 11 | 11 | 23 | 35 | 26 | 8 | 2 | 232 |
| 3,535 | 2,587 | 2,212 | 6,369 | 8,915 | 5,173 | 1,375 | 467 | |
| 0 | 0 | 1 | 2 | 0 | 3 | 1 | 0 | 126 |
| 48 | 13 | 134 | 230 | 31 | 331 | 100 | 0 | |
| 107 | 211 | 184 | 32 | 2 | 0 | 0 | 0 | 348 |
| 47,913 | 83,113 | 48,482 | 6,587 | 432 | 15 | 29 | 0 | |
| 5 | 15 | 27 | 10 | 0 | 0 | 0 | 0 | 204 |
| 1,592 | 3,453 | 4,906 | 1,485 | 15 | 0 | 0 | 0 | |
| 52 | 31 | 31 | 19 | 6 | 1 | 0 | 0 | 740 |
| 43,667 | 26,221 | 23,662 | 6,276 | 2,024 | 235 | 44 | 81 | |
| 0 | 0 | 0 | 0 | 0 | 0 | 0 | 0 | 251 |
| 0 | 23 | 33 | 0 | 0 | 0 | 0 | 0 | |
| 1 | 0 | 0 | 0 | 3 | 93 | 720 | 571 | 345 |
| 1,322 | 3 | 16 | 69 | 540 | 28,738 | 261,061 | 186,835 | |
| 0 | 0 | 0 | 0 | 0 | 21 | 166 | 87 | 356 |
| 0 | 0 | 0 | 0 | 0 | 6,597 | 57,645 | 33,548 | |

| 部類 | 項目 | | 品目 | 平成16年計 | 1月 | 2月 | 3月 | 4月 |
|---------|----------|--------|---------|-----------|---------|---------|---------|---------|
| | | | | | | | | |
| らん鉢 | シンビジウム類 | 市場全体 | 数量(千本) | 413 | 56 | 29 | 16 | 5 |
| | | | 金額(千円) | 1,164,054 | 127,586 | 65,417 | 37,530 | 10,732 |
| | | 茨城県産 | 数量(千本) | 8 | 3 | 3 | 1 | 0 |
| | | | 金額(千円) | 18,431 | 6,327 | 6,411 | 2,684 | 61 |
| | デンドロビウム類 | 市場全体 | 数量(千本) | 583 | 57 | 82 | 86 | 63 |
| | | | 金額(千円) | 638,053 | 55,696 | 80,304 | 86,344 | 66,599 |
| | | 茨城県産 | 数量(千本) | 3 | 0 | 0 | 0 | 0 |
| | | | 金額(千円) | 1,288 | 0 | 13 | 11 | 7 |
| | ファレノプシス類 | 市場全体 | 数量(千本) | 935 | 47 | 54 | 85 | 113 |
| | | | 金額(千円) | 3,930,207 | 205,533 | 235,554 | 375,416 | 427,799 |
| | | 茨城県産 | 数量(千本) | 23 | 1 | 2 | 3 | 3 |
| | | | 金額(千円) | 102,500 | 5,126 | 6,729 | 12,820 | 14,819 |
| | カトレア | 市場全体 | 数量(千本) | 90 | 13 | 13 | 10 | 8 |
| | | | 金額(千円) | 84,239 | 9,948 | 11,569 | 10,452 | 8,023 |
| 茨城県産 | | 数量(千本) | 2 | 0 | 0 | 0 | 0 | |
| | | 金額(千円) | 3,264 | 437 | 239 | 929 | 331 | |
| オンシジューム | 市場全体 | 数量(千本) | 164 | 17 | 10 | 5 | 4 | |
| | | 金額(千円) | 188,120 | 14,289 | 10,269 | 7,971 | 7,344 | |
| | 茨城県産 | 数量(千本) | 3 | 1 | 1 | 0 | 0 | |
| | | 金額(千円) | 4,112 | 209 | 203 | 281 | 193 | |
| 観葉植 | ドラセナ類 | 市場全体 | 数量(千本) | 772 | 51 | 48 | 62 | 88 |
| | | | 金額(千円) | 751,058 | 60,653 | 52,933 | 75,864 | 97,536 |
| | | 茨城県産 | 数量(千本) | 7 | 1 | 1 | 1 | 1 |
| | | | 金額(千円) | 3,413 | 247 | 626 | 291 | 653 |
| | シェフレラ類 | 市場全体 | 数量(千本) | 140 | 14 | 13 | 17 | 18 |
| | | | 金額(千円) | 123,673 | 12,806 | 12,096 | 17,649 | 15,457 |
| | | 茨城県産 | 数量(千本) | 6 | 0 | 0 | 0 | 1 |
| | | | 金額(千円) | 4,035 | 137 | 298 | 235 | 391 |
| | ヤシ類 | 市場全体 | 数量(千本) | 400 | 27 | 33 | 34 | 44 |
| | | | 金額(千円) | 365,338 | 25,164 | 26,148 | 39,494 | 45,653 |
| | | 茨城県産 | 数量(千本) | 1 | 0 | 0 | 0 | 0 |
| | | | 金額(千円) | 137 | 0 | 0 | 0 | 0 |
| | 多肉・サボテン類 | 市場全体 | 数量(千本) | 1,632 | 138 | 173 | 186 | 174 |
| | | | 金額(千円) | 344,143 | 29,619 | 37,302 | 41,899 | 37,157 |
| 茨城県産 | | 数量(千本) | 34 | 4 | 4 | 3 | 2 | |
| | | 金額(千円) | 7,726 | 1,154 | 1,045 | 622 | 522 | |
| アジアンタム | 市場全体 | 数量(千本) | 277 | 15 | 16 | 23 | 48 | |
| | | 金額(千円) | 44,639 | 2,164 | 2,965 | 4,438 | 8,670 | |
| | 茨城県産 | 数量(千本) | 7 | 0 | 0 | 0 | 1 | |
| | | 金額(千円) | 463 | 0 | 0 | 33 | 96 | |
| ネフロレピス | 市場全体 | 数量(千本) | 100 | 7 | 7 | 12 | 11 | |
| | | 金額(千円) | 23,400 | 2,038 | 2,401 | 2,722 | 2,821 | |
| | 茨城県産 | 数量(千本) | 5 | 0 | 0 | 1 | 1 | |
| | | 金額(千円) | 429 | 0 | 11 | 41 | 78 | |
| ガジュマル | 市場全体 | 数量(千本) | 109 | 7 | 3 | 6 | 8 | |
| | | 金額(千円) | 38,854 | 2,327 | 1,432 | 4,163 | 5,337 | |
| | 茨城県産 | 数量(千本) | 0 | 0 | 0 | 0 | 0 | |
| | | 金額(千円) | 56 | 5 | 19 | 0 | 0 | |
| ベンジャミン | 市場全体 | 数量(千本) | 122 | 4 | 5 | 14 | 18 | |
| | | 金額(千円) | 131,888 | 6,481 | 9,050 | 17,646 | 22,527 | |
| | 茨城県産 | 数量(千本) | 3 | 0 | 0 | 0 | 1 | |
| | | 金額(千円) | 903 | 0 | 29 | 35 | 178 | |
| オリヅルラン | 市場全体 | 数量(千本) | 91 | 3 | 3 | 7 | 12 | |
| | | 金額(千円) | 13,714 | 593 | 622 | 1,413 | 1,814 | |
| | 茨城県産 | 数量(千本) | 18 | 0 | 0 | 1 | 3 | |
| | | 金額(千円) | 1,412 | 0 | 23 | 123 | 182 | |

| 5月 | 6月 | 7月 | 8月 | 9月 | 10月 | 11月 | 12月 | 年平均 単価 |
|---------|---------|---------|---------|---------|---------|---------|---------|-----------|
| 1 | 0 | 0 | 0 | 2 | 24 | 87 | 191 | 2,820 |
| 2,055 | 393 | 98 | 630 | 6,245 | 75,917 | 245,724 | 591,727 | |
| 0 | 0 | 0 | 0 | 0 | 0 | 0 | 1 | 2,310 |
| 0 | 2 | 0 | 0 | 9 | 30 | 781 | 2,126 | |
| 60 | 23 | 21 | 26 | 38 | 16 | 27 | 82 | 1,095 |
| 69,116 | 32,125 | 32,528 | 30,737 | 48,126 | 22,866 | 29,645 | 83,967 | |
| 0 | 0 | 1 | 1 | 1 | 0 | 0 | 0 | 370 |
| 15 | 141 | 209 | 167 | 365 | 186 | 118 | 57 | |
| 119 | 91 | 80 | 58 | 85 | 59 | 68 | 76 | 4,204 |
| 424,703 | 320,560 | 351,442 | 239,684 | 366,999 | 333,029 | 307,485 | 342,002 | |
| 3 | 2 | 2 | 1 | 1 | 1 | 1 | 2 | 4,456 |
| 12,127 | 8,850 | 8,244 | 3,827 | 6,903 | 7,721 | 6,913 | 8,421 | |
| 8 | 6 | 6 | 3 | 3 | 5 | 6 | 9 | 938 |
| 7,258 | 6,375 | 4,856 | 1,965 | 3,441 | 6,151 | 6,225 | 7,975 | |
| 1 | 0 | 0 | 0 | 0 | 0 | 0 | 0 | 1,341 |
| 762 | 202 | 27 | 8 | 9 | 51 | 101 | 167 | |
| 4 | 5 | 8 | 11 | 19 | 16 | 24 | 42 | 1,150 |
| 6,780 | 8,261 | 11,763 | 13,080 | 22,699 | 19,382 | 27,393 | 38,889 | |
| 0 | 0 | 0 | 0 | 0 | 0 | 0 | 0 | 1,370 |
| 478 | 293 | 525 | 395 | 503 | 394 | 432 | 206 | |
| 82 | 88 | 87 | 59 | 78 | 57 | 43 | 28 | 973 |
| 76,976 | 74,782 | 64,953 | 52,044 | 64,448 | 52,401 | 47,386 | 31,083 | |
| 1 | 0 | 1 | 1 | 1 | 0 | 0 | 0 | 501 |
| 252 | 211 | 349 | 307 | 305 | 84 | 41 | 47 | |
| 11 | 13 | 14 | 10 | 11 | 9 | 8 | 5 | 884 |
| 10,269 | 10,761 | 9,008 | 8,468 | 8,284 | 6,974 | 6,190 | 5,712 | |
| 1 | 0 | 1 | 1 | 1 | 1 | 0 | 0 | 631 |
| 432 | 245 | 349 | 499 | 739 | 684 | 26 | 0 | |
| 42 | 47 | 49 | 30 | 36 | 24 | 19 | 14 | 913 |
| 35,591 | 44,461 | 40,615 | 25,472 | 26,164 | 21,042 | 19,347 | 16,190 | |
| 0 | 0 | 0 | 0 | 0 | 0 | 0 | 0 | 159 |
| 0 | 22 | 65 | 17 | 11 | 15 | 7 | 0 | |
| 148 | 166 | 119 | 100 | 144 | 124 | 94 | 66 | 211 |
| 28,753 | 39,686 | 25,892 | 20,528 | 30,213 | 24,854 | 16,763 | 11,476 | |
| 3 | 4 | 2 | 2 | 4 | 4 | 2 | 1 | 228 |
| 484 | 758 | 380 | 369 | 847 | 678 | 627 | 241 | |
| 59 | 29 | 21 | 14 | 18 | 12 | 11 | 10 | 161 |
| 10,493 | 4,562 | 3,241 | 2,375 | 2,280 | 1,588 | 1,024 | 839 | |
| 1 | 0 | 0 | 1 | 2 | 1 | 1 | 0 | 63 |
| 78 | 22 | 1 | 55 | 117 | 37 | 25 | 0 | |
| 12 | 13 | 8 | 8 | 9 | 7 | 4 | 2 | 235 |
| 2,350 | 2,335 | 1,921 | 1,964 | 1,846 | 1,428 | 938 | 636 | |
| 1 | 1 | 0 | 0 | 1 | 0 | 0 | 0 | 78 |
| 127 | 61 | 28 | 0 | 64 | 15 | 4 | 0 | |
| 7 | 21 | 19 | 10 | 13 | 6 | 6 | 4 | 355 |
| 3,197 | 6,431 | 4,891 | 3,433 | 3,579 | 1,623 | 1,494 | 948 | |
| 0 | 0 | 0 | 0 | 0 | 0 | 0 | 0 | 272 |
| 13 | 0 | 6 | 8 | 0 | 5 | 0 | 0 | |
| 15 | 15 | 11 | 12 | 12 | 8 | 4 | 2 | 1,084 |
| 14,182 | 13,509 | 10,681 | 10,371 | 9,481 | 7,703 | 5,681 | 4,578 | |
| 0 | 0 | 0 | 0 | 0 | 0 | 0 | 0 | 270 |
| 154 | 96 | 191 | 95 | 42 | 75 | 9 | 0 | |
| 15 | 14 | 12 | 8 | 7 | 5 | 3 | 1 | 151 |
| 2,018 | 2,113 | 1,586 | 1,279 | 913 | 636 | 404 | 322 | |
| 2 | 3 | 4 | 2 | 1 | 1 | 0 | 0 | 79 |
| 108 | 317 | 391 | 167 | 75 | 18 | 8 | 0 | |

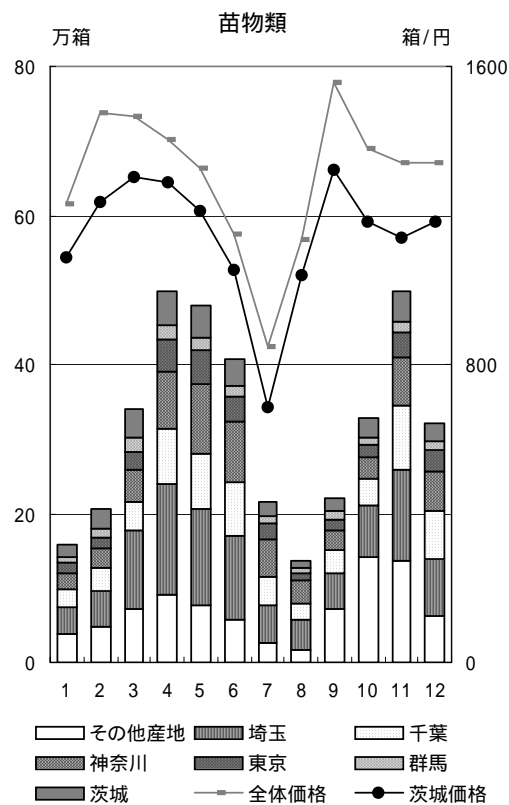
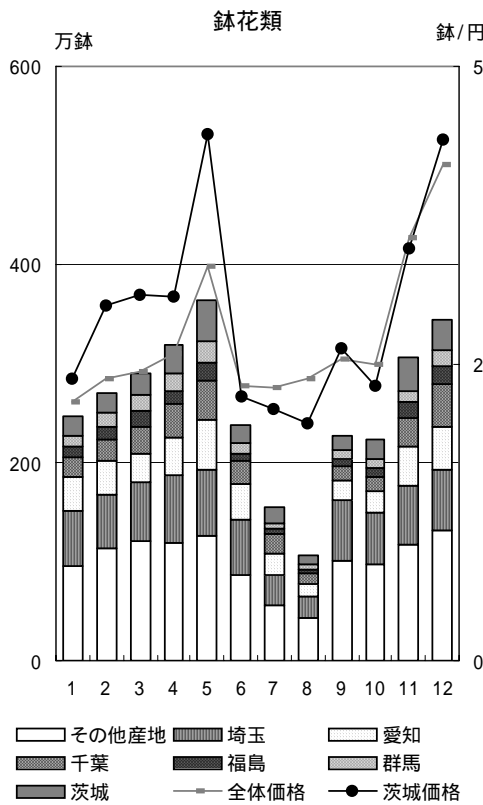
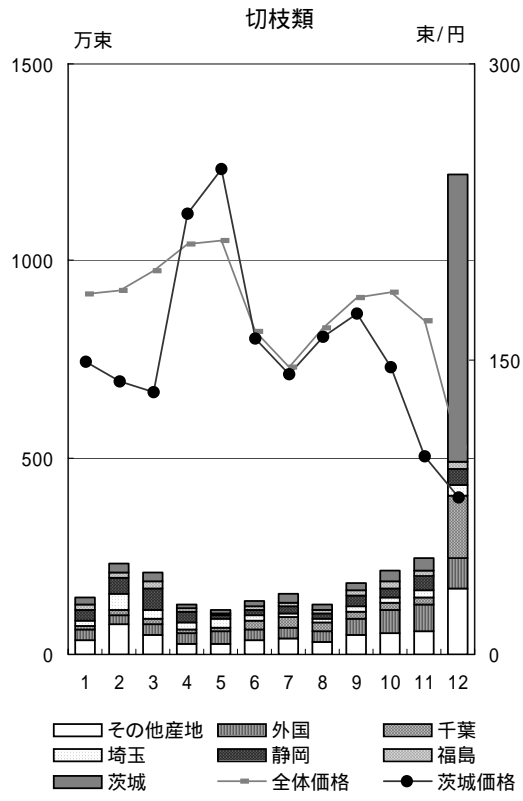
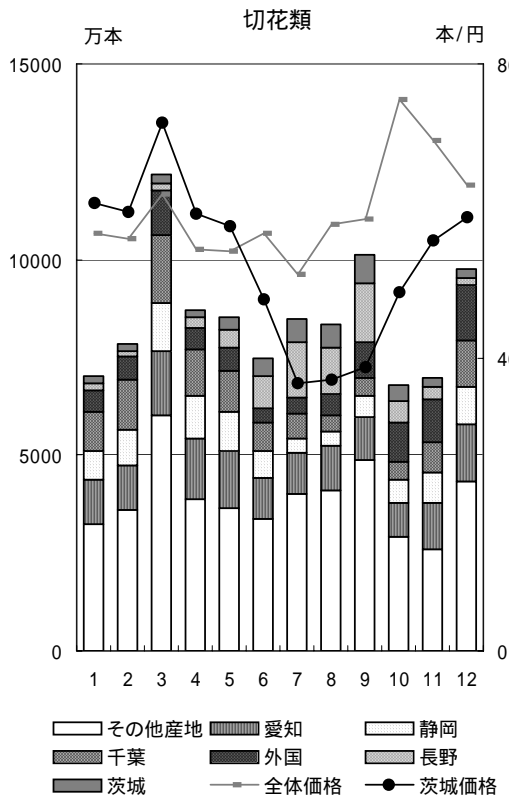
| 部類 | 項目 | | 品目 | 平成16年計 | 1月 | 2月 | 3月 | 4月 |
|---------|----------|--------|---------|---------|--------|--------|--------|---------|
| | | | | | | | | |
| 観葉植物 | ペペロミア | 市場全体 | 数量(千本) | 59 | 5 | 6 | 6 | 6 |
| | | | 金額(千円) | 11,925 | 960 | 1,341 | 1,391 | 1,188 |
| | | 茨城県産 | 数量(千本) | 0 | 0 | 0 | 0 | 0 |
| | | | 金額(千円) | 2 | 0 | 0 | 0 | 0 |
| | スパティフィラム | 市場全体 | 数量(千本) | 243 | 3 | 10 | 20 | 41 |
| | | | 金額(千円) | 93,001 | 1,120 | 3,687 | 8,389 | 17,708 |
| | | 茨城県産 | 数量(千本) | 0 | 0 | 0 | 0 | 0 |
| | | | 金額(千円) | 34 | 0 | 0 | 19 | 0 |
| | ディフェンバキア | 市場全体 | 数量(千本) | 227 | 0 | 2 | 13 | 36 |
| | | | 金額(千円) | 64,445 | 186 | 754 | 4,913 | 11,852 |
| | | 茨城県産 | 数量(千本) | 39 | 0 | 0 | 0 | 1 |
| | | | 金額(千円) | 9,836 | 34 | 62 | 142 | 416 |
| ポトス | 市場全体 | 数量(千本) | 834 | 42 | 45 | 67 | 119 | |
| | | 金額(千円) | 306,003 | 17,636 | 19,064 | 29,262 | 44,007 | |
| | 茨城県産 | 数量(千本) | 33 | 1 | 0 | 1 | 4 | |
| | | 金額(千円) | 10,727 | 311 | 260 | 431 | 1,849 | |
| 鑑 | ハイドラングリア | 市場全体 | 数量(千本) | 724 | 0 | 1 | 54 | 227 |
| | | | 金額(千円) | 510,720 | 314 | 1,085 | 34,365 | 160,143 |
| | | 茨城県産 | 数量(千本) | 68 | 0 | 0 | 4 | 17 |
| | | | 金額(千円) | 71,905 | 0 | 57 | 3,962 | 18,161 |
| | くちなし | 市場全体 | 数量(千本) | 73 | 0 | 6 | 12 | 11 |
| | | | 金額(千円) | 22,088 | 0 | 2,474 | 3,314 | 4,014 |
| | | 茨城県産 | 数量(千本) | 8 | 0 | 1 | 2 | 1 |
| | | | 金額(千円) | 1,971 | 0 | 450 | 592 | 417 |
| | しゃくなげ | 市場全体 | 数量(千本) | 49 | 2 | 6 | 10 | 15 |
| | | | 金額(千円) | 24,979 | 1,248 | 3,704 | 5,682 | 7,256 |
| | | 茨城県産 | 数量(千本) | 0 | 0 | 0 | 0 | 0 |
| | | | 金額(千円) | 111 | 0 | 13 | 23 | 0 |
| つつじ | 市場全体 | 数量(千本) | 59 | 1 | 5 | 12 | 17 | |
| | | 金額(千円) | 15,328 | 491 | 2,028 | 3,974 | 3,855 | |
| | 茨城県産 | 数量(千本) | 5 | 0 | 2 | 2 | 1 | |
| | | 金額(千円) | 1,464 | 76 | 468 | 542 | 308 | |
| つばき | 市場全体 | 数量(千本) | 46 | 9 | 8 | 4 | 1 | |
| | | 金額(千円) | 16,305 | 3,472 | 2,761 | 1,337 | 373 | |
| | 茨城県産 | 数量(千本) | 0 | 0 | 0 | 0 | 0 | |
| | | 金額(千円) | 60 | 0 | 2 | 6 | 0 | |
| ぼけ | 市場全体 | 数量(千本) | 48 | 21 | 13 | 3 | 0 | |
| | | 金額(千円) | 25,339 | 10,962 | 6,928 | 1,757 | 43 | |
| | 茨城県産 | 数量(千本) | 0 | 0 | 0 | 0 | 0 | |
| | | 金額(千円) | 7 | 0 | 5 | 0 | 2 | |
| むくげ | 市場全体 | 数量(千本) | 13 | 0 | 0 | 0 | 0 | |
| | | 金額(千円) | 3,984 | 0 | 0 | 0 | 1 | |
| | 茨城県産 | 数量(千本) | 0 | 0 | 0 | 0 | 0 | |
| | | 金額(千円) | 90 | 0 | 0 | 0 | 0 | |
| 万両 | 市場全体 | 数量(千本) | 38 | 1 | 0 | 0 | 0 | |
| | | 金額(千円) | 22,780 | 171 | 42 | 61 | 41 | |
| | 茨城県産 | 数量(千本) | 5 | 1 | 0 | 0 | 0 | |
| | | 金額(千円) | 1,371 | 117 | 0 | 0 | 0 | |
| むらさきしきぶ | 市場全体 | 数量(千本) | 46 | 0 | 0 | 0 | 0 | |
| | | 金額(千円) | 10,253 | 0 | 1 | 0 | 0 | |
| | 茨城県産 | 数量(千本) | 23 | 0 | 0 | 0 | 0 | |
| | | 金額(千円) | 5,322 | 0 | 0 | 0 | 0 | |
| 樹 | ハイドランジア | 市場全体 | 数量(千本) | 724 | 0 | 1 | 54 | 227 |
| | | | 金額(千円) | 510,720 | 314 | 1,085 | 34,365 | 160,143 |
| | | 茨城県産 | 数量(千本) | 68 | 0 | 0 | 4 | 17 |
| | | | 金額(千円) | 71,905 | 0 | 57 | 3,962 | 18,161 |
| | くちなし | 市場全体 | 数量(千本) | 73 | 0 | 6 | 12 | 11 |
| | | | 金額(千円) | 22,088 | 0 | 2,474 | 3,314 | 4,014 |
| | | 茨城県産 | 数量(千本) | 8 | 0 | 1 | 2 | 1 |
| | | | 金額(千円) | 1,971 | 0 | 450 | 592 | 417 |
| | しゃくなげ | 市場全体 | 数量(千本) | 49 | 2 | 6 | 10 | 15 |
| | | | 金額(千円) | 24,979 | 1,248 | 3,704 | 5,682 | 7,256 |
| | | 茨城県産 | 数量(千本) | 0 | 0 | 0 | 0 | 0 |
| | | | 金額(千円) | 111 | 0 | 13 | 23 | 0 |
| つつじ | 市場全体 | 数量(千本) | 59 | 1 | 5 | 12 | 17 | |
| | | 金額(千円) | 15,328 | 491 | 2,028 | 3,974 | 3,855 | |
| | 茨城県産 | 数量(千本) | 5 | 0 | 2 | 2 | 1 | |
| | | 金額(千円) | 1,464 | 76 | 468 | 542 | 308 | |
| つばき | 市場全体 | 数量(千本) | 46 | 9 | 8 | 4 | 1 | |
| | | 金額(千円) | 16,305 | 3,472 | 2,761 | 1,337 | 373 | |
| | 茨城県産 | 数量(千本) | 0 | 0 | 0 | 0 | 0 | |
| | | 金額(千円) | 60 | 0 | 2 | 6 | 0 | |
| ぼけ | 市場全体 | 数量(千本) | 48 | 21 | 13 | 3 | 0 | |
| | | 金額(千円) | 25,339 | 10,962 | 6,928 | 1,757 | 43 | |
| | 茨城県産 | 数量(千本) | 0 | 0 | 0 | 0 | 0 | |
| | | 金額(千円) | 7 | 0 | 5 | 0 | 2 | |
| むくげ | 市場全体 | 数量(千本) | 13 | 0 | 0 | 0 | 0 | |
| | | 金額(千円) | 3,984 | 0 | 0 | 0 | 1 | |
| | 茨城県産 | 数量(千本) | 0 | 0 | 0 | 0 | 0 | |
| | | 金額(千円) | 90 | 0 | 0 | 0 | 0 | |
| 万両 | 市場全体 | 数量(千本) | 38 | 1 | 0 | 0 | 0 | |
| | | 金額(千円) | 22,780 | 171 | 42 | 61 | 41 | |
| | 茨城県産 | 数量(千本) | 5 | 1 | 0 | 0 | 0 | |
| | | 金額(千円) | 1,371 | 117 | 0 | 0 | 0 | |
| むらさきしきぶ | 市場全体 | 数量(千本) | 46 | 0 | 0 | 0 | 0 | |
| | | 金額(千円) | 10,253 | 0 | 1 | 0 | 0 | |
| | 茨城県産 | 数量(千本) | 23 | 0 | 0 | 0 | 0 | |
| | | 金額(千円) | 5,322 | 0 | 0 | 0 | 0 | |

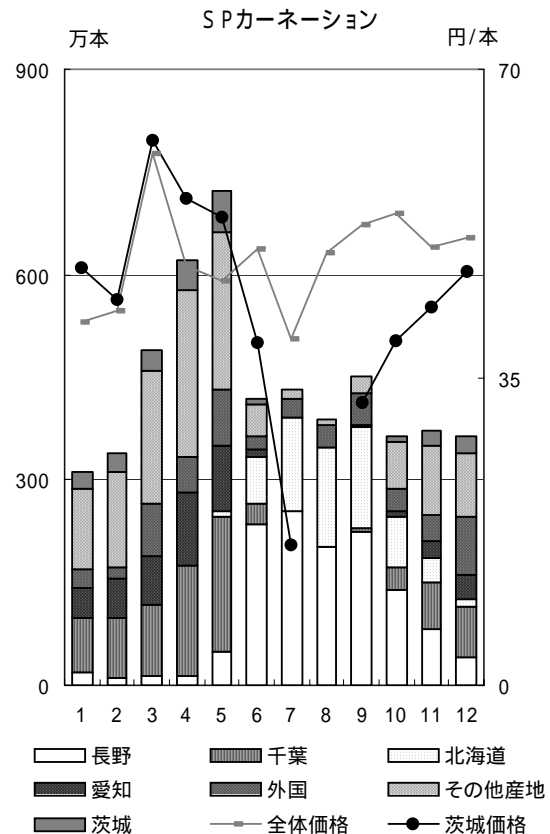
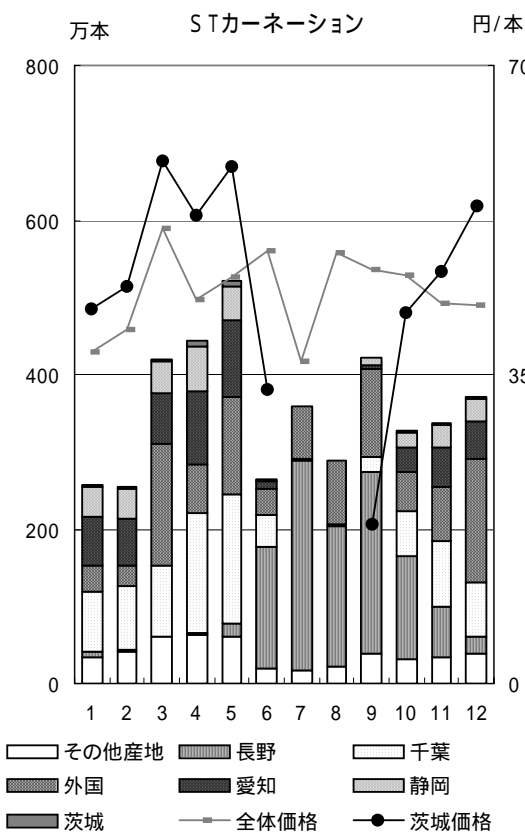
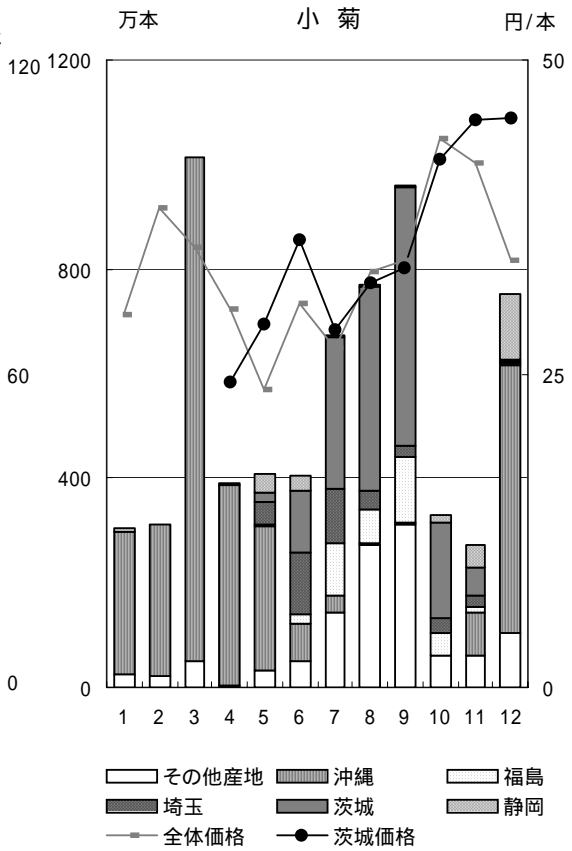
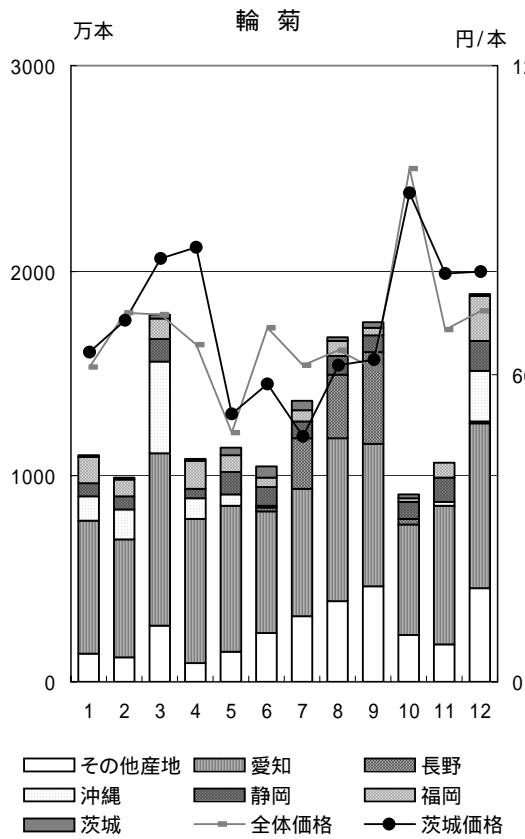
| 5月 | 6月 | 7月 | 8月 | 9月 | 10月 | 11月 | 12月 | 年平均 単価 |
|---------|--------|--------|--------|--------|--------|--------|--------|-----------|
| 8 | 6 | 5 | 3 | 4 | 5 | 3 | 2 | |
| 993 | 1,191 | 1,005 | 772 | 875 | 1,001 | 642 | 564 | 200 |
| 0 | 0 | 0 | 0 | 0 | 0 | 0 | 0 | |
| 0 | 0 | 0 | 2 | 0 | 0 | 0 | 0 | 158 |
| 51 | 41 | 35 | 20 | 11 | 5 | 3 | 3 | |
| 20,129 | 14,544 | 13,040 | 7,267 | 3,367 | 1,426 | 916 | 1,409 | 382 |
| 0 | 0 | 0 | 0 | 0 | 0 | 0 | 0 | |
| 0 | 15 | 0 | 0 | 0 | 0 | 0 | 0 | 608 |
| 35 | 45 | 46 | 21 | 17 | 9 | 2 | 0 | |
| 10,478 | 13,751 | 12,529 | 4,692 | 3,138 | 1,561 | 431 | 161 | 284 |
| 3 | 9 | 11 | 6 | 4 | 2 | 1 | 0 | |
| 887 | 2,576 | 3,179 | 1,273 | 755 | 347 | 153 | 13 | 254 |
| 104 | 99 | 94 | 78 | 71 | 52 | 32 | 30 | |
| 34,356 | 34,653 | 30,550 | 25,177 | 23,601 | 18,927 | 14,733 | 14,036 | 367 |
| 4 | 6 | 4 | 6 | 4 | 2 | 1 | 0 | |
| 1,195 | 2,282 | 1,116 | 1,250 | 914 | 554 | 438 | 127 | 321 |
| 339 | 90 | 8 | 0 | 0 | 0 | 4 | 0 | |
| 260,984 | 46,826 | 5,237 | 94 | 34 | 14 | 1,600 | 23 | 705 |
| 37 | 4 | 3 | 0 | 0 | 0 | 3 | 0 | |
| 41,561 | 4,162 | 2,991 | 17 | 0 | 0 | 995 | 0 | 1,057 |
| 13 | 22 | 5 | 2 | 2 | 0 | 0 | 0 | |
| 4,560 | 6,076 | 893 | 294 | 357 | 100 | 6 | 0 | 304 |
| 0 | 0 | 2 | 1 | 0 | 0 | 0 | 0 | |
| 0 | 66 | 285 | 127 | 23 | 10 | 0 | 0 | 252 |
| 3 | 0 | 0 | 0 | 2 | 5 | 4 | 2 | |
| 1,805 | 0 | 0 | 127 | 927 | 1,991 | 1,550 | 688 | 509 |
| 0 | 0 | 0 | 0 | 0 | 0 | 0 | 0 | |
| 75 | 0 | 0 | 0 | 0 | 0 | 0 | 0 | 691 |
| 13 | 1 | 0 | 0 | 2 | 3 | 3 | 1 | |
| 1,811 | 417 | 86 | 22 | 618 | 826 | 758 | 443 | 260 |
| 0 | 0 | 0 | 0 | 0 | 0 | 0 | 0 | |
| 70 | 1 | 0 | 0 | 0 | 0 | 0 | 0 | 285 |
| 1 | 0 | 0 | 0 | 2 | 6 | 9 | 6 | |
| 316 | 242 | 53 | 27 | 576 | 2,141 | 3,101 | 1,908 | 355 |
| 0 | 0 | 0 | 0 | 0 | 0 | 0 | 0 | |
| 19 | 0 | 6 | 0 | 0 | 0 | 15 | 12 | 244 |
| 0 | 0 | 0 | 0 | 0 | 0 | 0 | 10 | |
| 4 | 1 | 3 | 3 | 9 | 12 | 122 | 5,494 | 524 |
| 0 | 0 | 0 | 0 | 0 | 0 | 0 | 0 | |
| 0 | 0 | 0 | 0 | 0 | 0 | 0 | 0 | 261 |
| 2 | 5 | 5 | 1 | 1 | 0 | 0 | 0 | |
| 783 | 1,534 | 1,257 | 235 | 161 | 9 | 3 | 0 | 296 |
| 0 | 0 | 0 | 0 | 0 | 0 | 0 | 0 | |
| 0 | 67 | 23 | 0 | 0 | 0 | 0 | 0 | 240 |
| 0 | 0 | 0 | 0 | 1 | 1 | 9 | 26 | |
| 31 | 4 | 6 | 81 | 604 | 469 | 4,367 | 16,902 | 592 |
| 0 | 0 | 0 | 0 | 0 | 0 | 3 | 1 | |
| 0 | 0 | 0 | 0 | 39 | 46 | 791 | 378 | 282 |
| 1 | 1 | 2 | 9 | 22 | 10 | 0 | 0 | |
| 8 | 94 | 353 | 2,401 | 5,281 | 2,019 | 96 | 0 | 222 |
| 0 | 0 | 1 | 6 | 10 | 5 | 0 | 0 | |
| 0 | 17 | 275 | 1,728 | 2,219 | 1,011 | 72 | 0 | 235 |

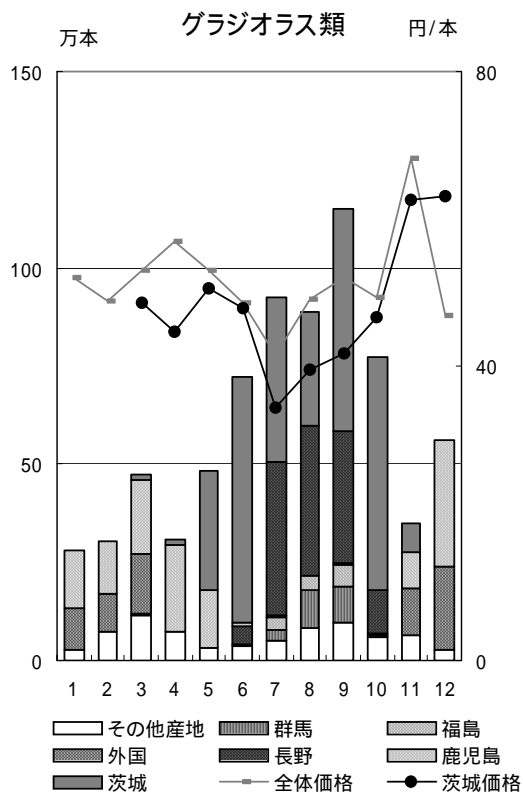
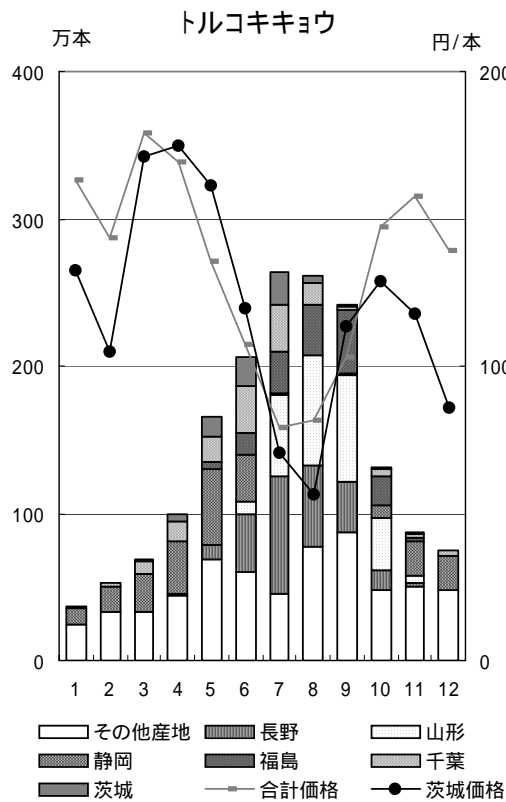
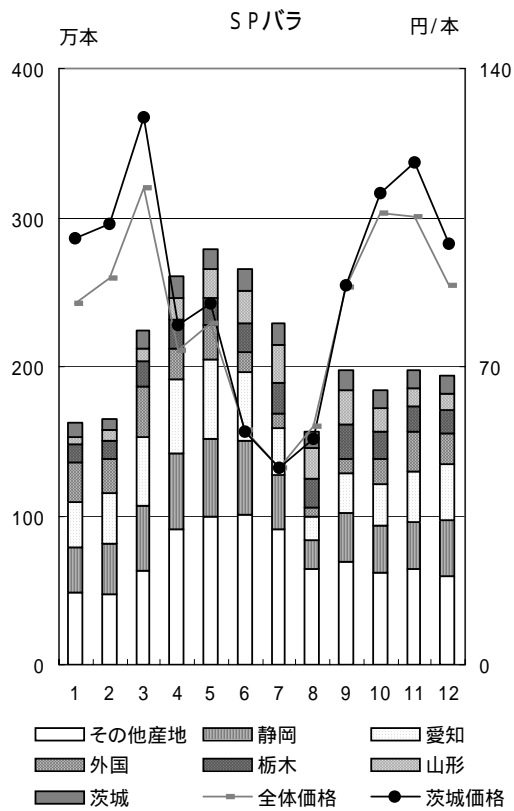
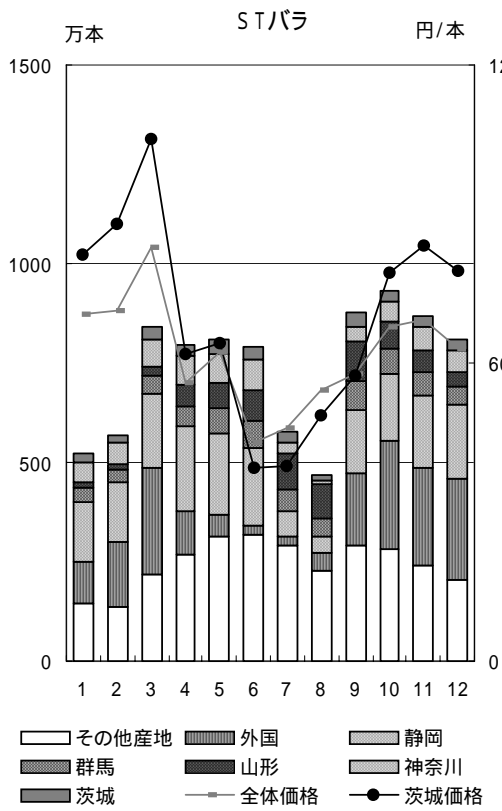
| 部類 | 項目 | | 品目 | 平成16年計 | 1月 | 2月 | 3月 | 4月 |
|-----------|-------|--------|---------|---------|--------|--------|--------|--------|
| | | | | | | | | |
| 苗 | パンジー | 市場全体 | 数量(千本) | 708 | 57 | 51 | 28 | 3 |
| | | | 金額(千円) | 795,504 | 52,275 | 49,417 | 27,327 | 2,314 |
| | 茨城県産 | 市場全体 | 数量(千本) | 81 | 10 | 14 | 7 | 1 |
| | | | 金額(千円) | 81,140 | 8,423 | 13,416 | 7,354 | 325 |
| | ペチュニア | 市場全体 | 数量(千本) | 225 | 0 | 1 | 31 | 74 |
| | | | 金額(千円) | 270,881 | 1 | 1,571 | 42,886 | 88,381 |
| | 茨城県産 | 市場全体 | 数量(千本) | 10 | 0 | 0 | 2 | 3 |
| | | | 金額(千円) | 10,763 | 0 | 11 | 2,204 | 3,287 |
| | 葉ボタン | 市場全体 | 数量(千本) | 149 | 0 | 0 | 0 | 0 |
| | | | 金額(千円) | 135,385 | 222 | 0 | 0 | 0 |
| | 茨城県産 | 市場全体 | 数量(千本) | 11 | 0 | 0 | 0 | 0 |
| | | | 金額(千円) | 11,795 | 2 | 0 | 0 | 0 |
| | サルビア | 市場全体 | 数量(千本) | 94 | 0 | 0 | 1 | 9 |
| | | | 金額(千円) | 110,648 | 86 | 305 | 1,124 | 11,431 |
| | 茨城県産 | 市場全体 | 数量(千本) | 7 | 0 | 0 | 0 | 1 |
| | | | 金額(千円) | 8,469 | 0 | 0 | 16 | 1,834 |
| | 芝ざくら | 市場全体 | 数量(千本) | 25 | 0 | 2 | 12 | 10 |
| | | | 金額(千円) | 30,486 | 113 | 2,605 | 16,408 | 11,043 |
| | 茨城県産 | 市場全体 | 数量(千本) | 2 | 0 | 0 | 1 | 0 |
| | | | 金額(千円) | 2,326 | 8 | 671 | 1,370 | 263 |
| デージー | 市場全体 | 数量(千本) | 23 | 3 | 6 | 5 | 1 | |
| | | 金額(千円) | 33,444 | 3,742 | 8,125 | 8,115 | 1,619 | |
| 茨城県産 | 市場全体 | 数量(千本) | 4 | 0 | 1 | 1 | 0 | |
| | | 金額(千円) | 5,255 | 462 | 1,016 | 1,341 | 393 | |
| 日々草 | 市場全体 | 数量(千本) | 139 | 0 | 0 | 0 | 8 | |
| | | 金額(千円) | 172,768 | 0 | 52 | 122 | 15,369 | |
| 茨城県産 | 市場全体 | 数量(千本) | 11 | 0 | 0 | 0 | 1 | |
| | | 金額(千円) | 12,594 | 0 | 0 | 11 | 2,048 | |
| ベゴニア | 市場全体 | 数量(千本) | 83 | 0 | 0 | 2 | 16 | |
| | | 金額(千円) | 89,469 | 52 | 167 | 2,533 | 18,598 | |
| 茨城県産 | 市場全体 | 数量(千本) | 7 | 0 | 0 | 0 | 1 | |
| | | 金額(千円) | 6,940 | 3 | 0 | 40 | 843 | |
| まつばぎく | 市場全体 | 数量(千本) | 40 | 0 | 3 | 15 | 11 | |
| | | 金額(千円) | 44,043 | 252 | 4,184 | 16,565 | 11,963 | |
| 茨城県産 | 市場全体 | 数量(千本) | 6 | 0 | 0 | 2 | 2 | |
| | | 金額(千円) | 5,048 | 0 | 661 | 1,646 | 1,678 | |
| マリーゴールド | 市場全体 | 数量(千本) | 155 | 0 | 0 | 22 | 36 | |
| | | 金額(千円) | 165,042 | 0 | 133 | 28,279 | 42,787 | |
| 茨城県産 | 市場全体 | 数量(千本) | 22 | 0 | 0 | 2 | 4 | |
| | | 金額(千円) | 19,241 | 0 | 0 | 2,484 | 3,528 | |
| その他 花き | 造園用下草 | 市場全体 | 数量(千本) | 232 | 8 | 11 | 20 | 30 |
| | | | 金額(千円) | 20,514 | 825 | 1,036 | 1,902 | 2,913 |
| | | 茨城県産 | 数量(千本) | 23 | 0 | 0 | 3 | 3 |
| | | | 金額(千円) | 1,227 | 9 | 0 | 252 | 182 |

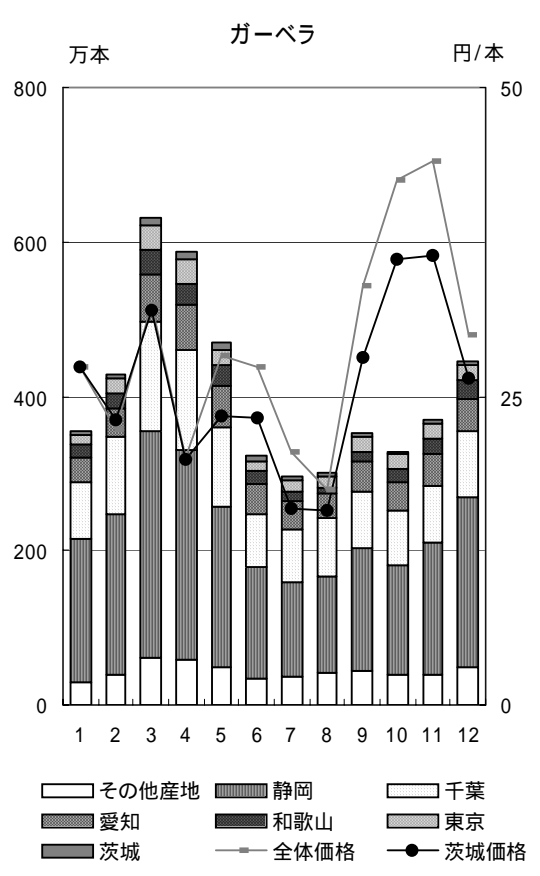
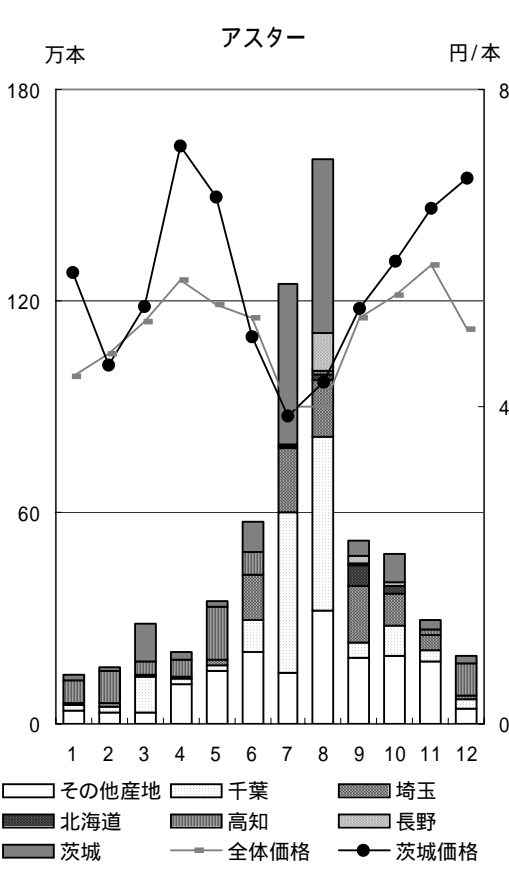
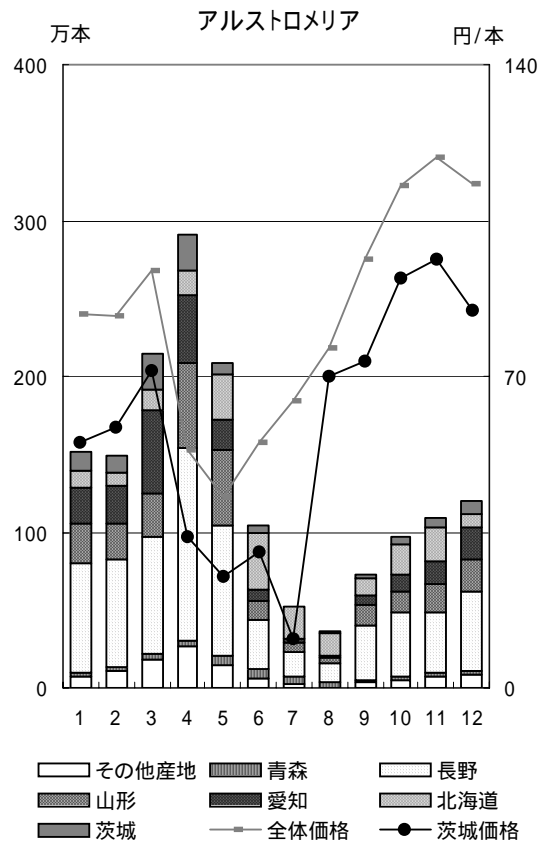
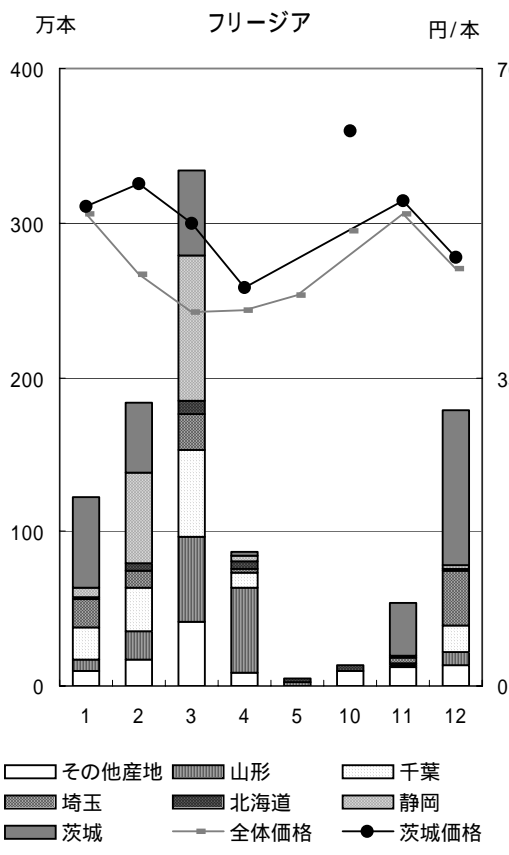
| 5月 | 6月 | 7月 | 8月 | 9月 | 10月 | 11月 | 12月 | 年平均 单值 |
|--------|--------|--------|--------|--------|---------|---------|---------|-----------|
| 0 | 0 | 0 | 0 | 20 | 151 | 264 | 134 | 1,123 |
| 44 | 49 | 0 | 5 | 21,806 | 170,031 | 314,660 | 157,577 | |
| 0 | 0 | 0 | 0 | 1 | 12 | 24 | 12 | 1,000 |
| 29 | 21 | 0 | 0 | 1,130 | 12,845 | 25,449 | 12,149 | |
| 51 | 34 | 18 | 10 | 7 | 0 | 0 | 0 | 1,203 |
| 60,585 | 40,485 | 17,055 | 11,538 | 8,226 | 133 | 20 | 0 | |
| 3 | 2 | 0 | 0 | 0 | 0 | 0 | 0 | 1,051 |
| 2,655 | 2,089 | 239 | 59 | 217 | 3 | 0 | 0 | |
| 0 | 0 | 0 | 0 | 1 | 17 | 70 | 60 | 911 |
| 0 | 0 | 0 | 0 | 650 | 13,428 | 64,333 | 56,752 | |
| 0 | 0 | 0 | 0 | 0 | 0 | 8 | 4 | 1,026 |
| 0 | 0 | 0 | 0 | 9 | 330 | 7,300 | 4,154 | |
| 26 | 29 | 12 | 5 | 7 | 3 | 1 | 0 | 1,179 |
| 32,324 | 32,286 | 9,453 | 5,340 | 10,648 | 5,435 | 1,939 | 277 | |
| 2 | 2 | 1 | 0 | 0 | 0 | 0 | 0 | 1,182 |
| 3,408 | 1,909 | 629 | 118 | 519 | 35 | 2 | 0 | |
| 0 | 0 | 0 | 0 | 0 | 0 | 0 | 0 | 1,228 |
| 190 | 33 | 0 | 3 | 58 | 22 | 4 | 7 | |
| 0 | 0 | 0 | 0 | 0 | 0 | 0 | 0 | 1,388 |
| 2 | 0 | 0 | 0 | 0 | 12 | 0 | 0 | |
| 0 | 1 | 0 | 0 | 0 | 1 | 3 | 3 | 1,439 |
| 475 | 593 | 192 | 82 | 110 | 853 | 4,563 | 4,975 | |
| 0 | 0 | 0 | 0 | 0 | 0 | 1 | 1 | 1,426 |
| 78 | 27 | 0 | 0 | 0 | 346 | 878 | 713 | |
| 27 | 36 | 35 | 23 | 9 | 0 | 0 | 0 | 1,242 |
| 45,615 | 51,184 | 27,523 | 21,568 | 11,177 | 135 | 11 | 10 | |
| 1 | 2 | 3 | 1 | 2 | 0 | 0 | 0 | 1,119 |
| 1,895 | 3,249 | 2,295 | 1,016 | 2,075 | 6 | 0 | 0 | |
| 20 | 20 | 7 | 3 | 10 | 5 | 1 | 0 | 1,082 |
| 22,803 | 20,205 | 4,683 | 3,065 | 11,682 | 4,900 | 644 | 137 | |
| 2 | 2 | 1 | 0 | 1 | 1 | 0 | 0 | 999 |
| 1,744 | 1,683 | 260 | 167 | 1,103 | 1,095 | 3 | 0 | |
| 5 | 4 | 2 | 1 | 0 | 0 | 0 | 0 | 1,089 |
| 5,394 | 4,020 | 1,030 | 464 | 80 | 81 | 9 | 0 | |
| 1 | 0 | 0 | 0 | 0 | 0 | 0 | 0 | 906 |
| 532 | 417 | 36 | 64 | 14 | 0 | 0 | 0 | |
| 33 | 31 | 13 | 5 | 11 | 3 | 1 | 0 | 1,067 |
| 35,453 | 29,032 | 8,406 | 4,118 | 12,922 | 3,332 | 565 | 15 | |
| 6 | 6 | 2 | 0 | 2 | 0 | 0 | 0 | 880 |
| 5,231 | 4,217 | 1,050 | 97 | 1,970 | 660 | 4 | 0 | |
| 34 | 25 | 22 | 13 | 21 | 20 | 18 | 10 | 88 |
| 3,049 | 2,013 | 1,349 | 1,094 | 1,892 | 1,711 | 1,620 | 1,110 | |
| 2 | 1 | 4 | 2 | 3 | 2 | 3 | 1 | 52 |
| 94 | 28 | 95 | 63 | 157 | 96 | 155 | 96 | |

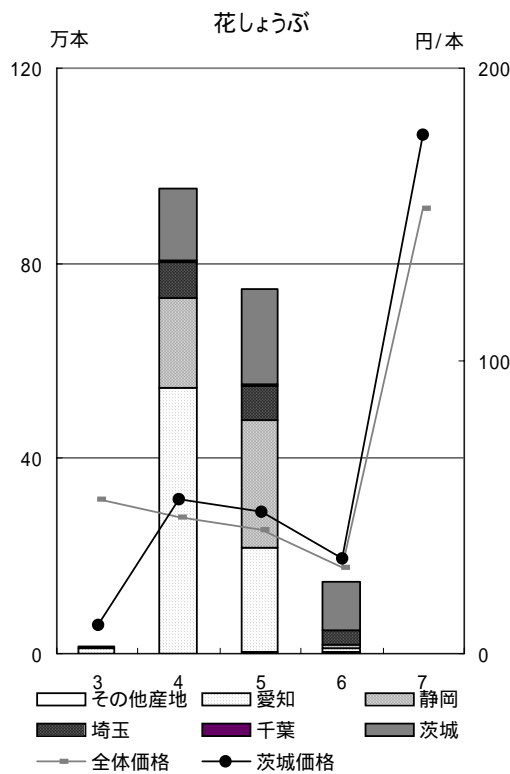
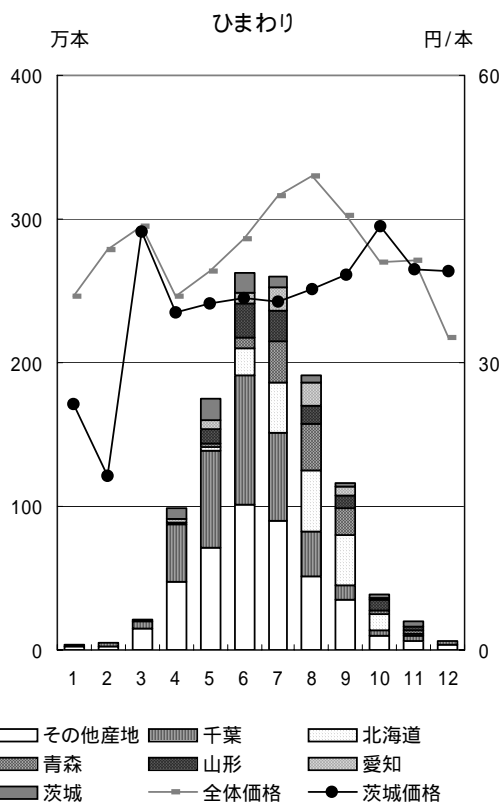
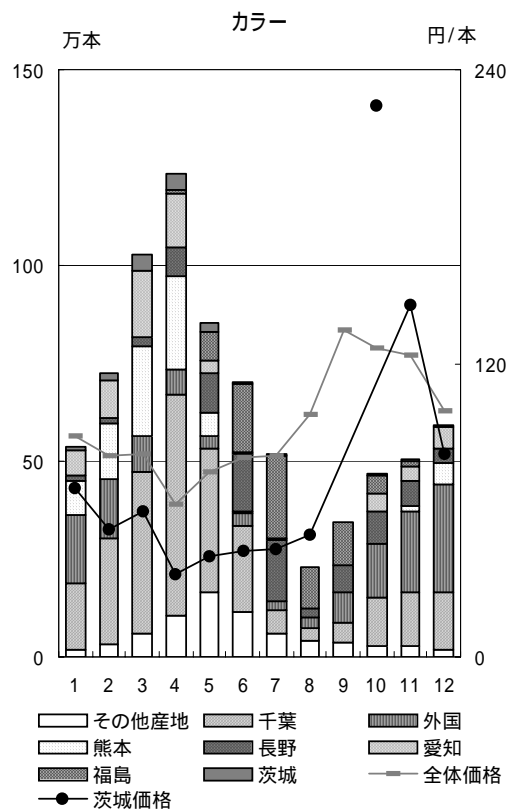
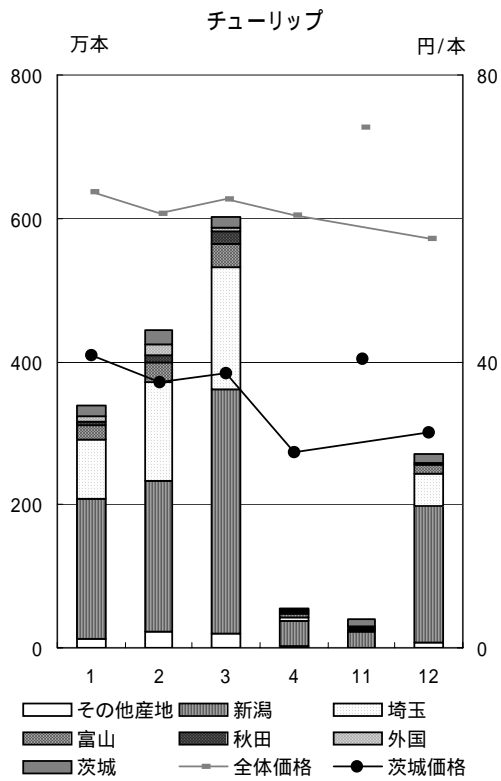
主要品目の月別産地別入荷状況

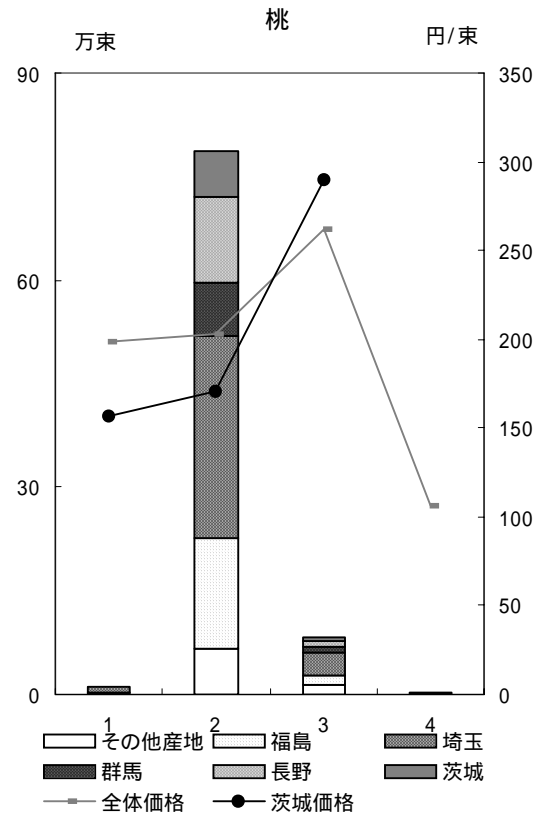
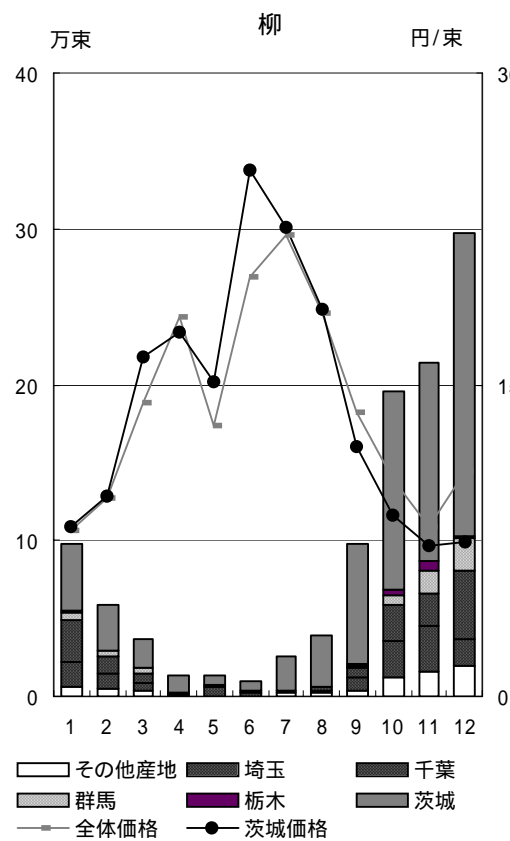
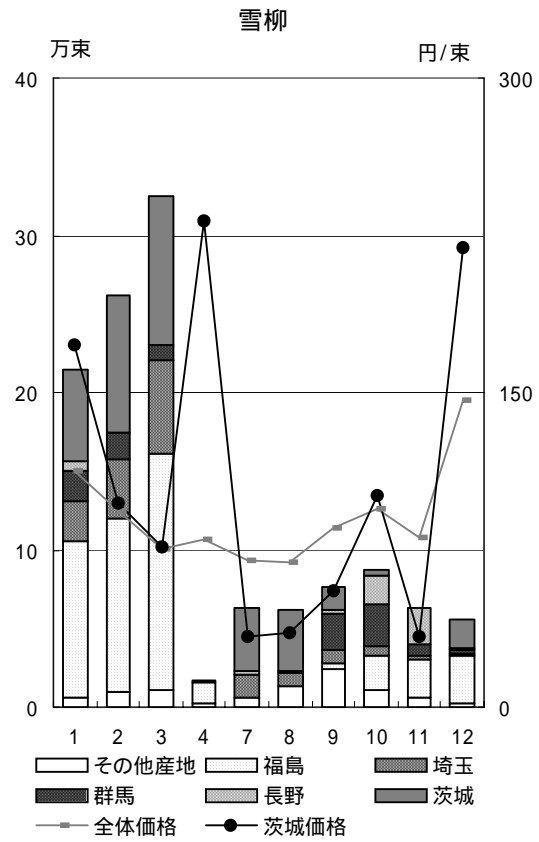
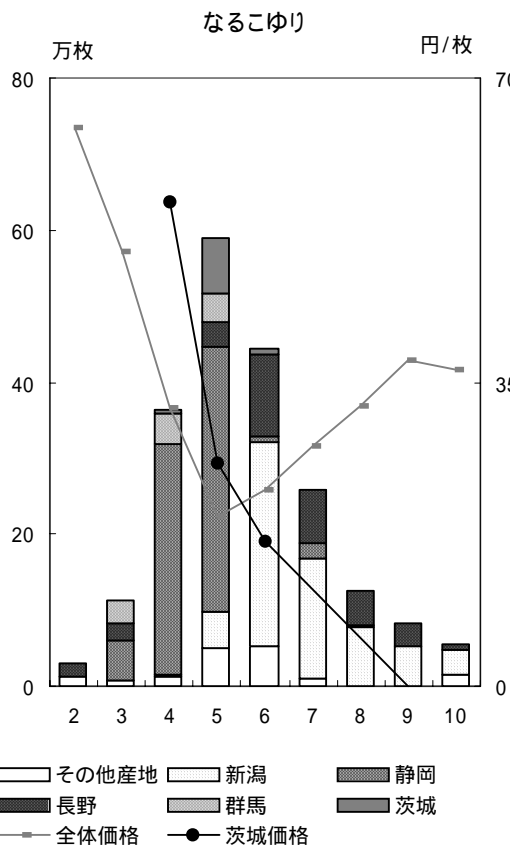


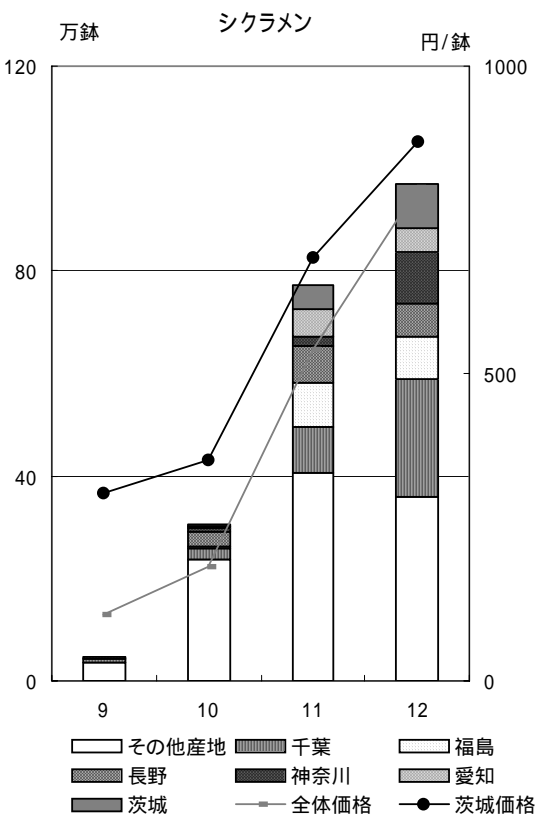
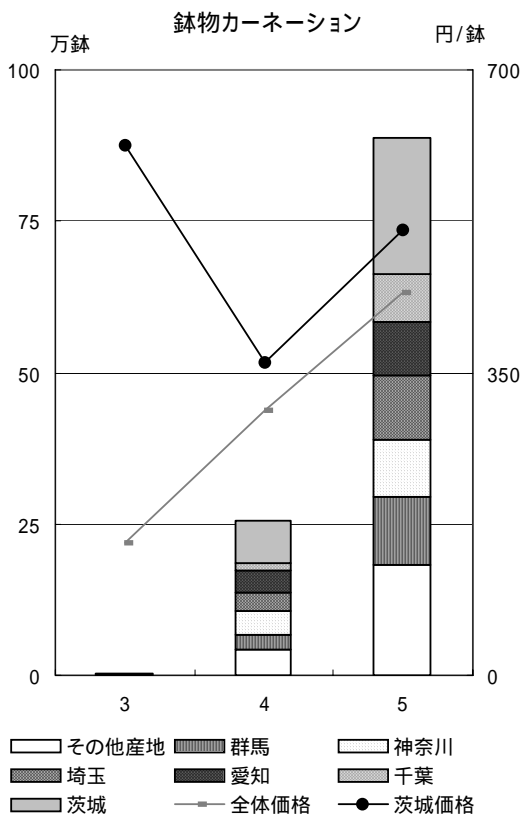
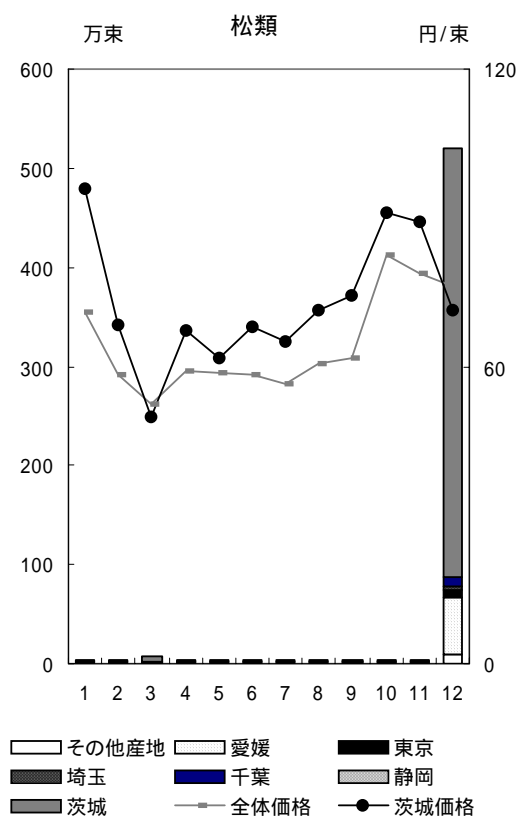
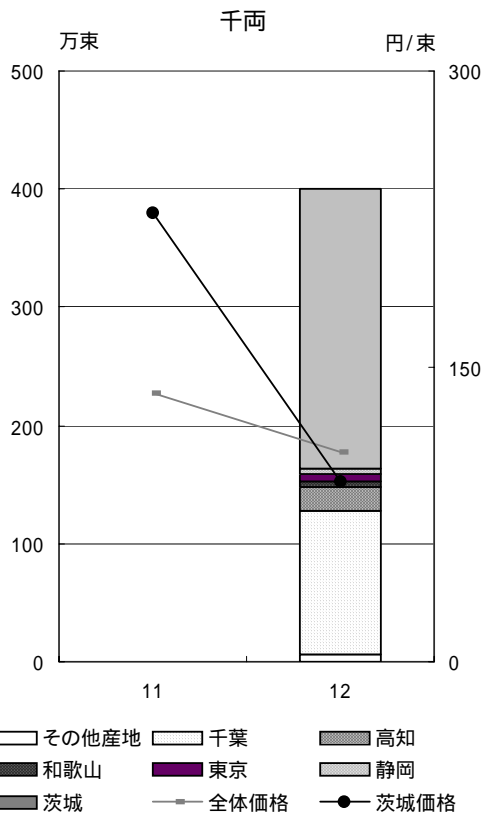


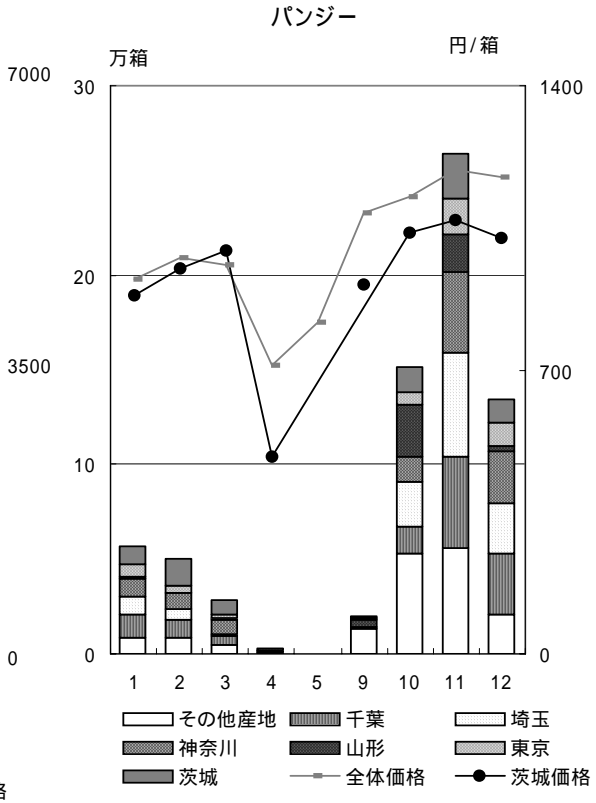
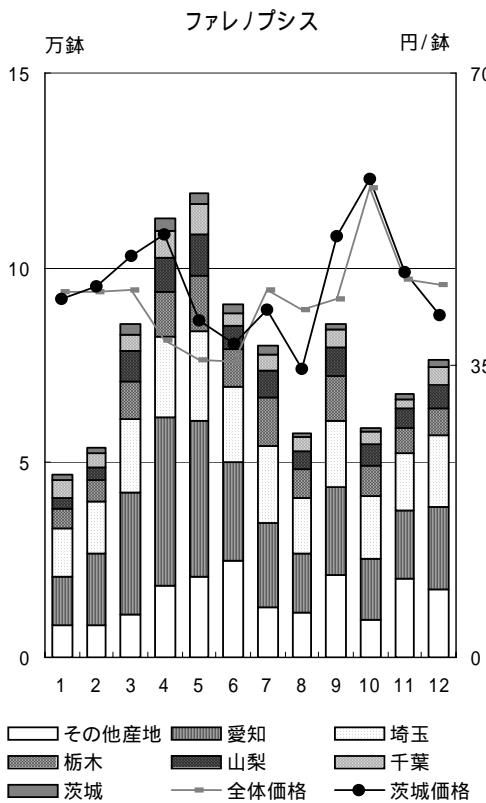
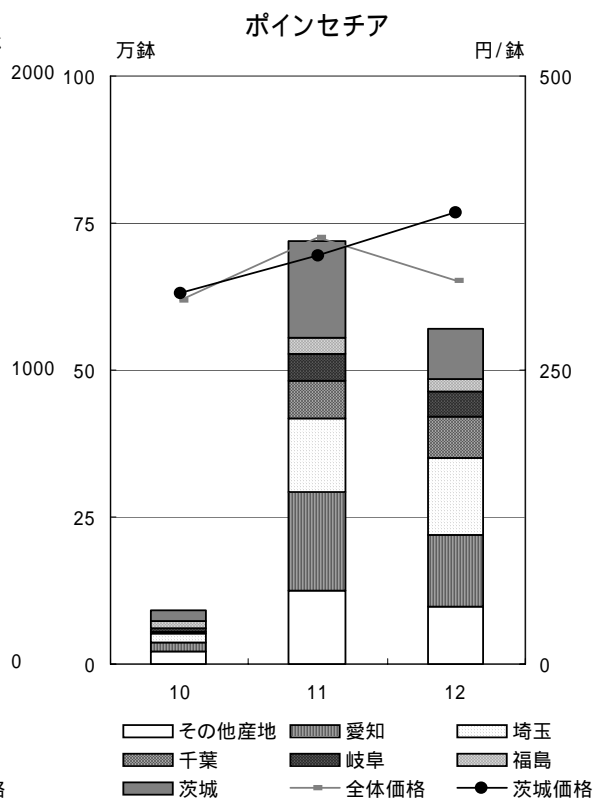
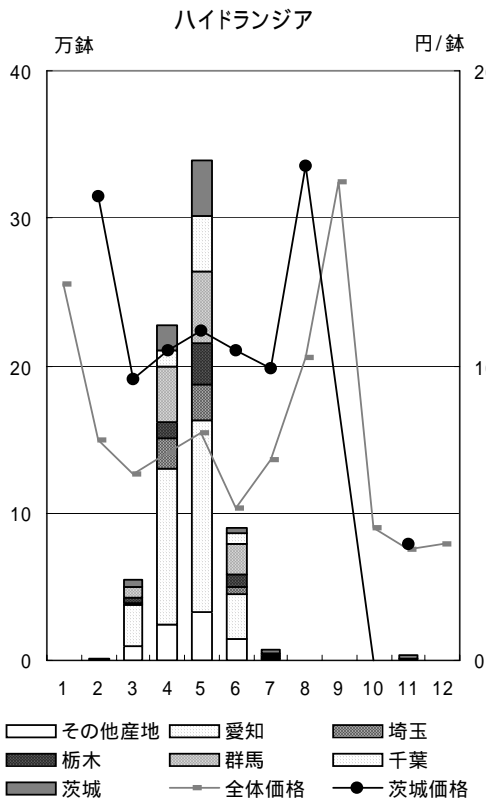












主要品目の外国産切り花入荷状況

| | | 1月 | 2月 | 3月 | 4月 | 5月 |
|---------------|------------|--------|--------|--------|--------|--------|
| 輪菊 | 数量(千本) | 96 | 71 | 794 | 56 | 120 |
| | 金額(千円) | 2,298 | 2,964 | 36,935 | 1,881 | 1,439 |
| | 価格(円/本) | 24 | 42 | 47 | 34 | 12 |
| | 数量シェア(%) | 0.87% | 0.72% | 4.45% | 0.52% | 1.05% |
| | 金額シェア(%) | 0.34% | 0.41% | 2.90% | 0.26% | 0.26% |
| | 対都中央価格比(%) | 39.1% | 57.8% | 64.6% | 50.8% | 25.1% |
| スプレー菊 | 数量(千本) | 666 | 489 | 1,482 | 409 | 493 |
| | 金額(千円) | 25,018 | 25,216 | 74,542 | 20,598 | 20,285 |
| | 価格(円/本) | 38 | 52 | 50 | 50 | 41 |
| | 数量シェア(%) | 16.3% | 12.5% | 20.4% | 9.8% | 11.5% |
| | 金額シェア(%) | 14.2% | 13.0% | 19.2% | 10.1% | 11.0% |
| | 対都中央価格比(%) | 87.3% | 103.1% | 94.9% | 102.8% | 95.8% |
| スタンダードバラ | 数量(千本) | 1,051 | 1,666 | 2,667 | 1,102 | 538 |
| | 金額(千円) | 30,618 | 47,809 | 96,247 | 25,058 | 16,249 |
| | 価格(円/本) | 29 | 29 | 36 | 23 | 30 |
| | 数量シェア(%) | 20.1% | 29.2% | 31.8% | 13.8% | 6.7% |
| | 金額シェア(%) | 8.4% | 11.9% | 13.8% | 5.6% | 3.2% |
| | 対都中央価格比(%) | 41.6% | 41.0% | 43.5% | 40.6% | 48.7% |
| スプレーバラ | 数量(千本) | 260 | 226 | 342 | 214 | 234 |
| | 金額(千円) | 10,267 | 9,714 | 20,811 | 6,679 | 10,403 |
| | 価格(円/本) | 40 | 43 | 61 | 31 | 44 |
| | 数量シェア(%) | 16.0% | 13.7% | 15.3% | 8.2% | 8.4% |
| | 金額シェア(%) | 7.5% | 6.5% | 8.3% | 3.5% | 4.6% |
| | 対都中央価格比(%) | 46.5% | 47.2% | 54.3% | 42.3% | 55.5% |
| スタンダードカーネーション | 数量(千本) | 337 | 281 | 1,583 | 611 | 1,252 |
| | 金額(千円) | 8,654 | 9,546 | 65,671 | 18,210 | 35,483 |
| | 価格(円/本) | 26 | 34 | 41 | 30 | 28 |
| | 数量シェア(%) | 13.1% | 11.0% | 37.7% | 13.8% | 24.0% |
| | 金額シェア(%) | 9.0% | 9.4% | 30.3% | 9.5% | 14.8% |
| | 対都中央価格比(%) | 67.6% | 85.0% | 79.8% | 69.3% | 61.6% |
| スプレーカーネーション | 数量(千本) | 258 | 170 | 749 | 524 | 801 |
| | 金額(千円) | 5,255 | 5,013 | 30,199 | 13,352 | 18,640 |
| | 価格(円/本) | 20 | 29 | 40 | 25 | 23 |
| | 数量シェア(%) | 8.2% | 5.0% | 15.3% | 8.4% | 11.1% |
| | 金額シェア(%) | 4.1% | 3.5% | 10.2% | 4.5% | 5.6% |
| | 対都中央価格比(%) | 49.7% | 68.5% | 66.1% | 53.1% | 50.6% |
| トルコキキョウ類 | 数量(千本) | 25 | 28 | 32 | 16 | 14 |
| | 金額(千円) | 3,792 | 3,862 | 4,656 | 969 | 878 |
| | 価格(円/本) | 154 | 138 | 144 | 61 | 63 |
| | 数量シェア(%) | 4.3% | 3.4% | 2.8% | 1.0% | 0.5% |
| | 金額シェア(%) | 4.2% | 3.3% | 2.3% | 0.3% | 0.2% |
| | 対都中央価格比(%) | 96.6% | 97.0% | 82.1% | 36.6% | 45.0% |
| グラジオラス類 | 数量(千本) | 104 | 95 | 154 | 0 | 0 |
| | 金額(千円) | 4,360 | 3,977 | 7,719 | 5 | 0 |
| | 価格(円/本) | 42 | 42 | 50 | 27 | |
| | 数量シェア(%) | 37.2% | 31.3% | 32.4% | 0.1% | 0.0% |
| | 金額シェア(%) | 29.9% | 26.7% | 30.7% | 0.0% | 0.0% |
| | 対都中央価格比(%) | 80.3% | 85.1% | 94.8% | 46.8% | |
| ゆり類 | 数量(千本) | 49 | 81 | 123 | 45 | 36 |
| | 金額(千円) | 7,832 | 15,170 | 21,125 | 6,169 | 3,377 |
| | 価格(円/本) | 160 | 186 | 172 | 137 | 95 |
| | 数量シェア(%) | 2.7% | 4.8% | 4.3% | 1.7% | 1.1% |
| | 金額シェア(%) | 2.3% | 4.3% | 3.7% | 1.5% | 0.8% |
| | 対都中央価格比(%) | 84.7% | 89.9% | 86.0% | 85.6% | 68.8% |

| 6月 | 7月 | 8月 | 9月 | 10月 | 11月 | 12月 | 平成16年計 |
|--------|--------|--------|--------|---------|--------|--------|---------|
| 34 | 102 | 133 | 151 | 90 | 440 | 564 | 2,652 |
| 1,612 | 3,001 | 4,057 | 5,461 | 6,813 | 11,889 | 15,758 | 94,108 |
| 47 | 29 | 31 | 36 | 75 | 27 | 28 | 35 |
| 0.32% | 0.75% | 0.79% | 0.87% | 0.99% | 4.12% | 2.98% | 1.68% |
| 0.22% | 0.36% | 0.37% | 0.51% | 0.75% | 1.62% | 1.15% | 0.88% |
| 68.7% | 47.3% | 47.0% | 59.2% | 75.3% | 39.7% | 38.8% | 53.0% |
| 569 | 638 | 890 | 920 | 576 | 889 | 2,033 | 10,055 |
| 32,412 | 34,986 | 56,063 | 55,203 | 40,022 | 46,339 | 77,594 | 508,279 |
| 57 | 55 | 63 | 60 | 70 | 52 | 38 | 51 |
| 14.3% | 13.1% | 16.2% | 12.8% | 12.7% | 17.8% | 25.4% | 16.0% |
| 14.2% | 13.9% | 18.1% | 14.8% | 14.1% | 16.8% | 20.1% | 15.6% |
| 99.9% | 105.4% | 112.4% | 115.4% | 110.3% | 94.8% | 79.5% | 97.2% |
| 221 | 194 | 436 | 1,855 | 2,769 | 2,454 | 2,515 | 17,467 |
| 6,803 | 9,176 | 29,863 | 62,929 | 106,758 | 89,709 | 72,235 | 593,454 |
| 31 | 47 | 68 | 34 | 39 | 37 | 29 | 34 |
| 2.8% | 3.4% | 9.3% | 21.1% | 29.7% | 28.2% | 31.1% | 19.7% |
| 2.0% | 3.4% | 11.6% | 12.4% | 17.0% | 15.0% | 14.2% | 10.7% |
| 70.1% | 100.7% | 124.5% | 58.5% | 57.5% | 53.0% | 45.6% | 54.8% |
| 128 | 86 | 56 | 94 | 172 | 266 | 207 | 2,284 |
| 2,698 | 1,369 | 1,304 | 4,786 | 10,493 | 16,028 | 9,949 | 104,500 |
| 21 | 16 | 23 | 51 | 61 | 60 | 48 | 46 |
| 4.8% | 3.8% | 3.6% | 4.7% | 9.3% | 13.5% | 10.7% | 9.1% |
| 1.8% | 1.3% | 1.5% | 2.7% | 5.4% | 7.7% | 5.8% | 5.1% |
| 38.4% | 34.5% | 41.7% | 57.3% | 57.6% | 57.4% | 54.0% | 56.5% |
| 347 | 688 | 813 | 1,149 | 520 | 708 | 1,588 | 9,877 |
| 10,923 | 18,946 | 25,211 | 42,429 | 17,476 | 21,798 | 50,469 | 324,816 |
| 31 | 28 | 31 | 37 | 34 | 31 | 32 | 33 |
| 13.1% | 19.1% | 28.2% | 27.2% | 15.9% | 21.0% | 42.8% | 23.2% |
| 8.4% | 14.4% | 17.9% | 21.5% | 11.6% | 15.0% | 31.7% | 17.1% |
| 64.2% | 74.4% | 63.3% | 78.6% | 73.1% | 71.6% | 73.9% | 73.1% |
| 187 | 279 | 326 | 486 | 309 | 381 | 828 | 5,297 |
| 5,050 | 5,388 | 9,726 | 16,924 | 11,184 | 12,972 | 29,826 | 163,530 |
| 27 | 19 | 30 | 35 | 36 | 34 | 36 | 31 |
| 4.4% | 6.4% | 8.4% | 10.8% | 8.5% | 10.2% | 22.8% | 10.0% |
| 2.4% | 3.2% | 5.1% | 7.2% | 5.7% | 7.0% | 16.2% | 6.4% |
| 54.1% | 49.6% | 60.9% | 67.0% | 67.1% | 68.1% | 70.6% | 63.0% |
| 1 | 0 | 0 | 4 | 8 | 99 | 120 | 346 |
| 10 | 0 | 0 | 114 | 1,508 | 11,239 | 12,759 | 39,787 |
| 16 | | | 31 | 184 | 114 | 106 | 115 |
| 0.0% | 0.0% | 0.0% | 0.1% | 0.4% | 6.5% | 10.1% | 1.3% |
| 0.0% | 0.0% | 0.0% | 0.0% | 0.4% | 4.9% | 7.9% | 1.2% |
| 14.3% | | | 30.0% | 125.1% | 74.1% | 79.3% | 96.6% |
| 2 | 3 | 1 | 8 | 4 | 117 | 215 | 704 |
| 155 | 128 | 51 | 429 | 250 | 6,970 | 7,363 | 31,407 |
| 69 | 38 | 53 | 56 | 59 | 60 | 34 | 45 |
| 0.3% | 0.4% | 0.1% | 0.7% | 0.5% | 33.5% | 38.2% | 9.7% |
| 0.4% | 0.3% | 0.1% | 0.7% | 0.7% | 29.2% | 27.9% | 8.7% |
| 143.5% | 91.0% | 108.6% | 107.6% | 120.4% | 87.5% | 73.0% | 89.3% |
| 27 | 39 | 109 | 186 | 117 | 154 | 212 | 1,178 |
| 1,658 | 2,224 | 16,453 | 27,915 | 13,902 | 16,911 | 28,215 | 160,951 |
| 61 | 57 | 151 | 150 | 119 | 110 | 133 | 137 |
| 0.8% | 1.0% | 3.2% | 5.2% | 4.3% | 5.9% | 6.2% | 3.3% |
| 0.4% | 0.5% | 3.3% | 4.7% | 2.9% | 3.8% | 4.8% | 2.9% |
| 53.5% | 52.8% | 104.9% | 89.8% | 69.2% | 63.6% | 76.9% | 87.3% |