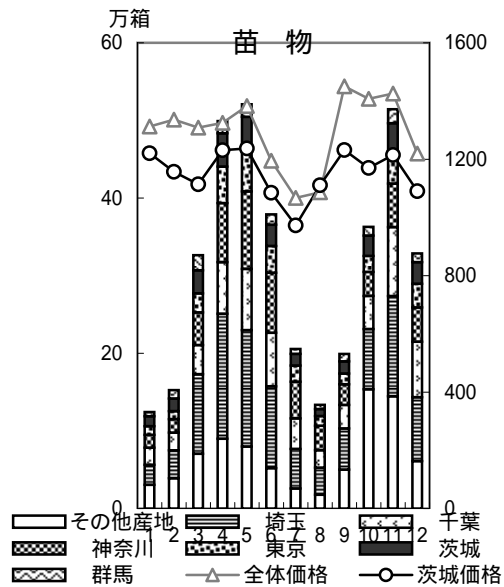
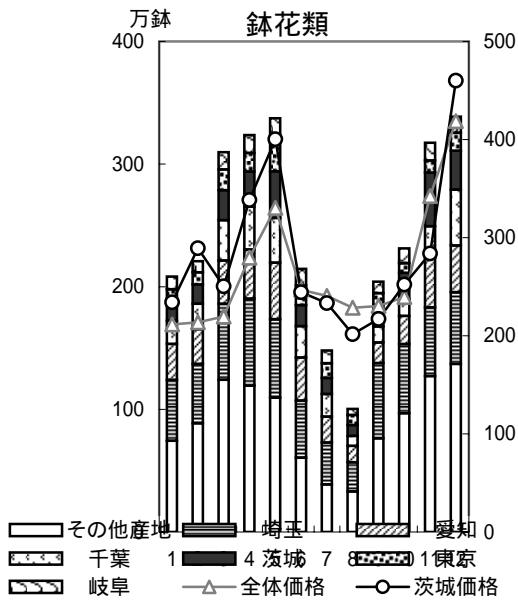
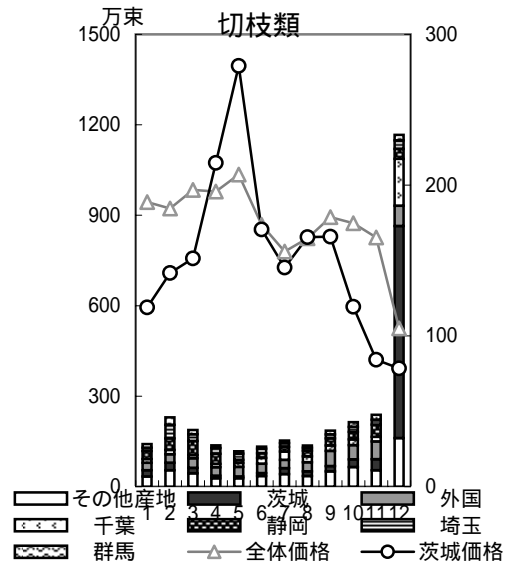
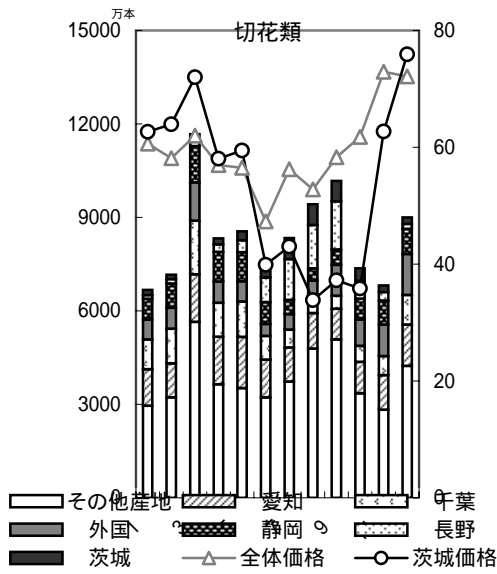
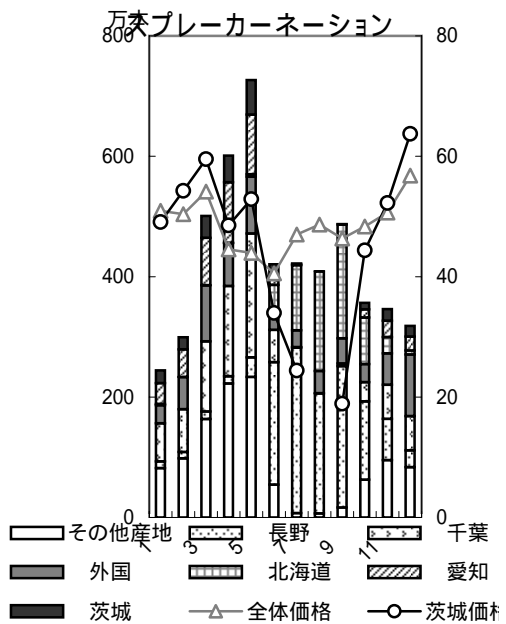
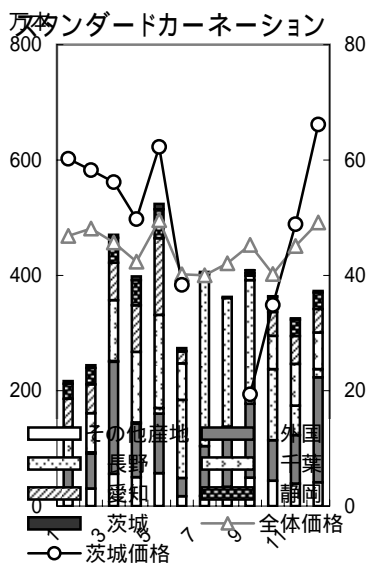
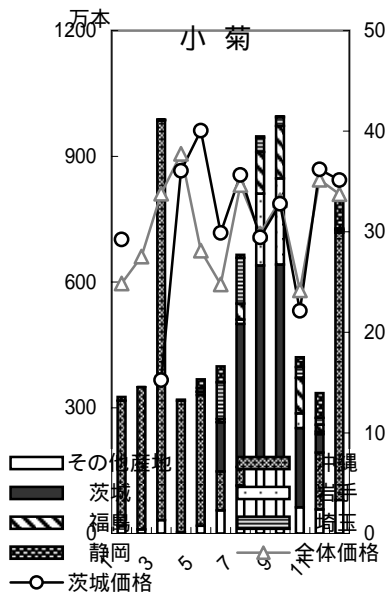
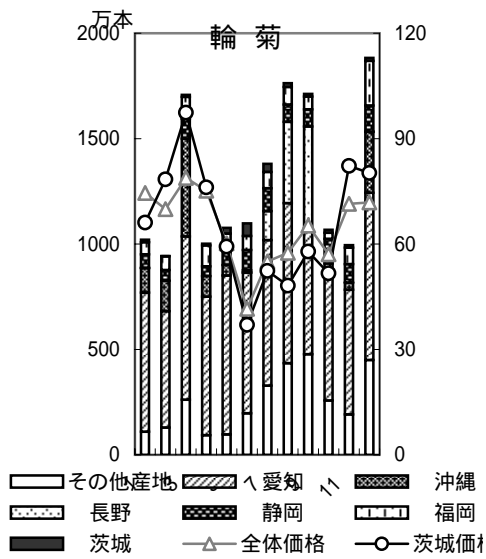
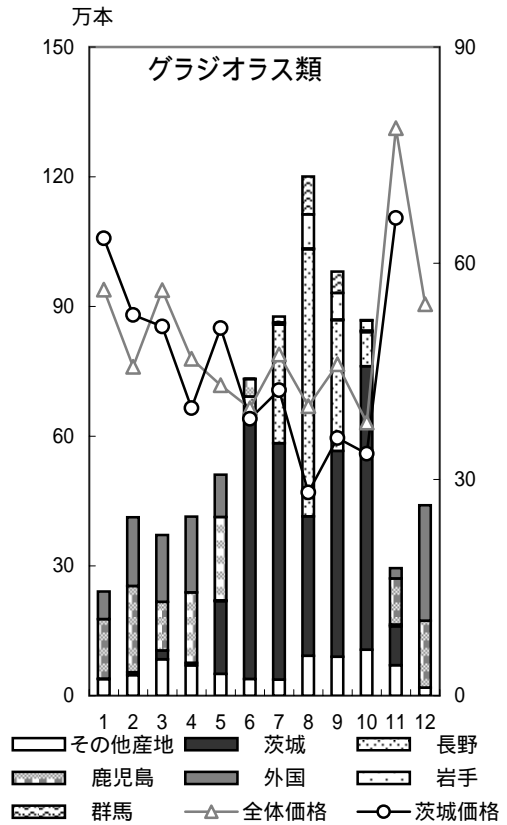
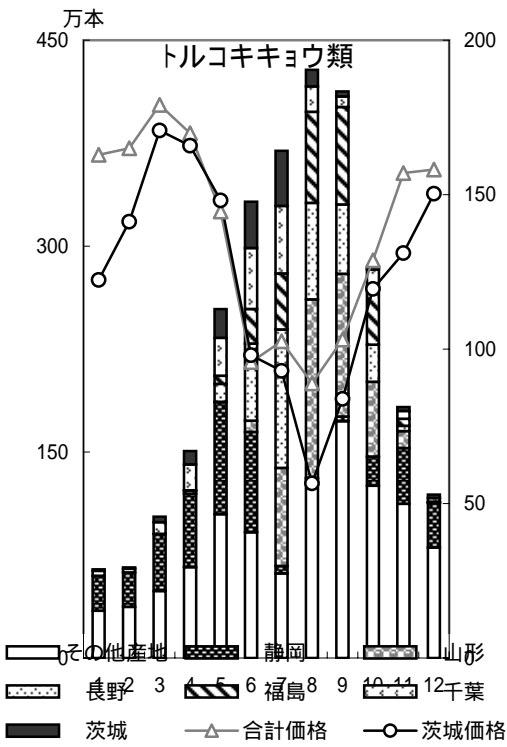
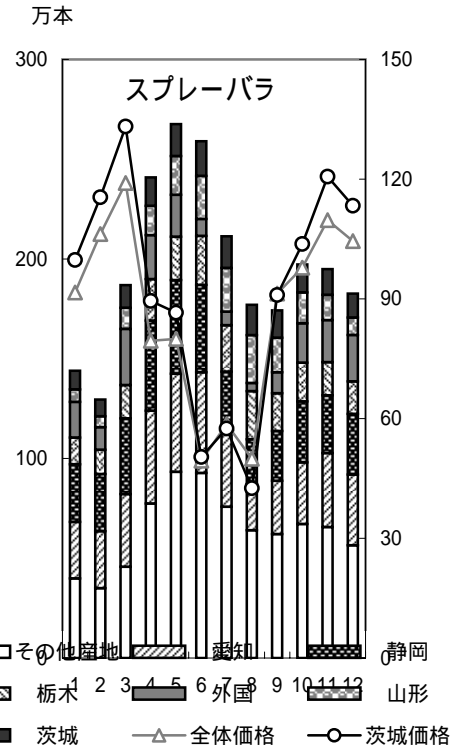
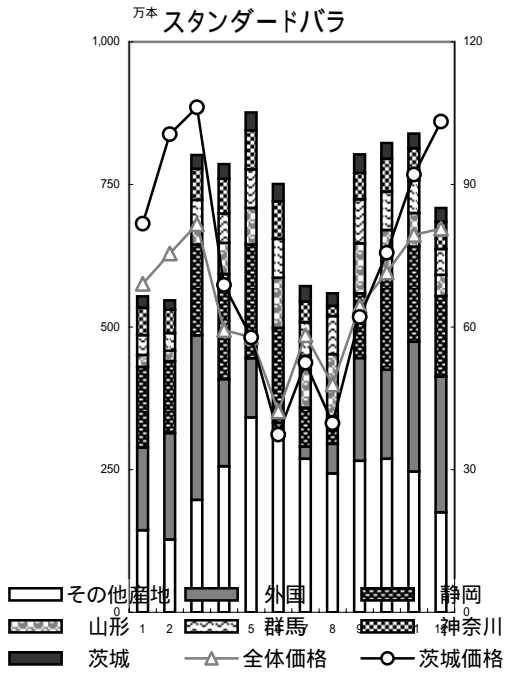


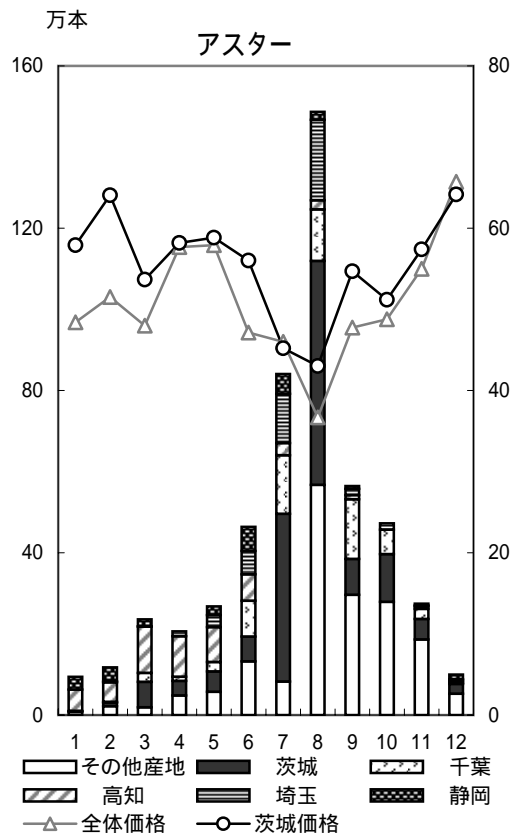
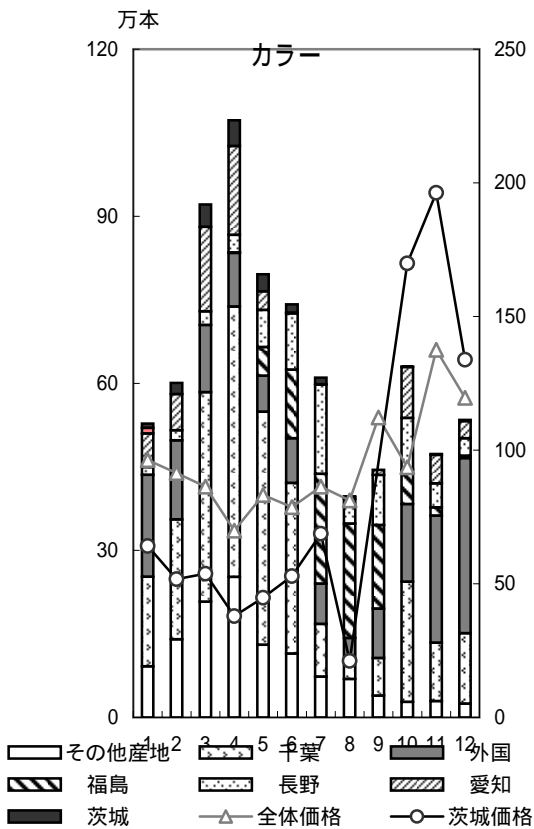
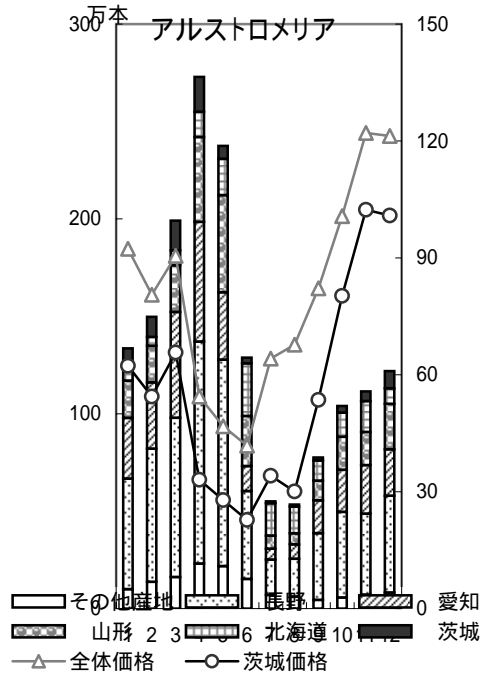
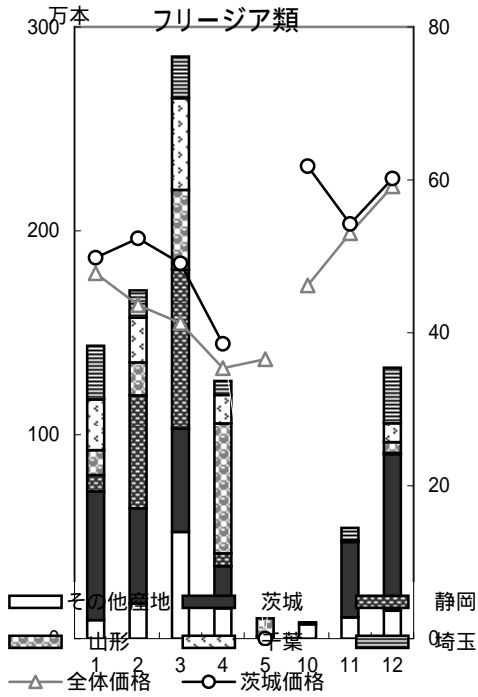
5 東京都中央卸売市場 主要品目の産地別入荷状況



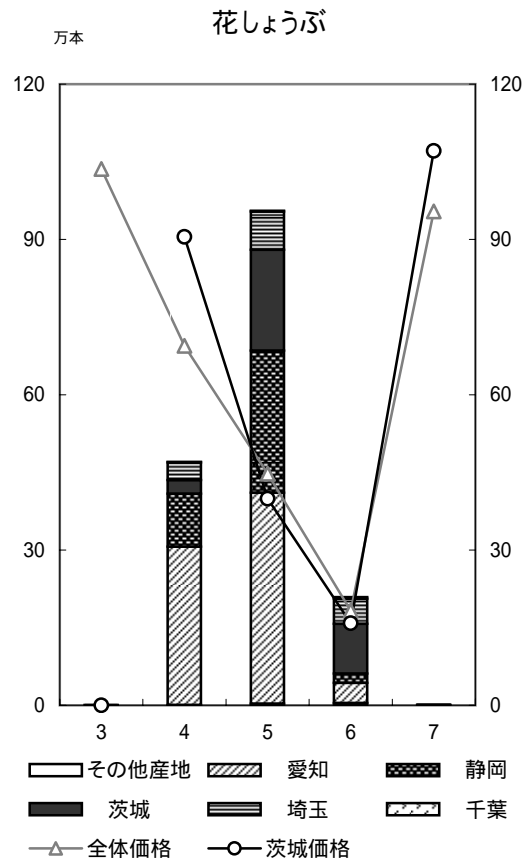
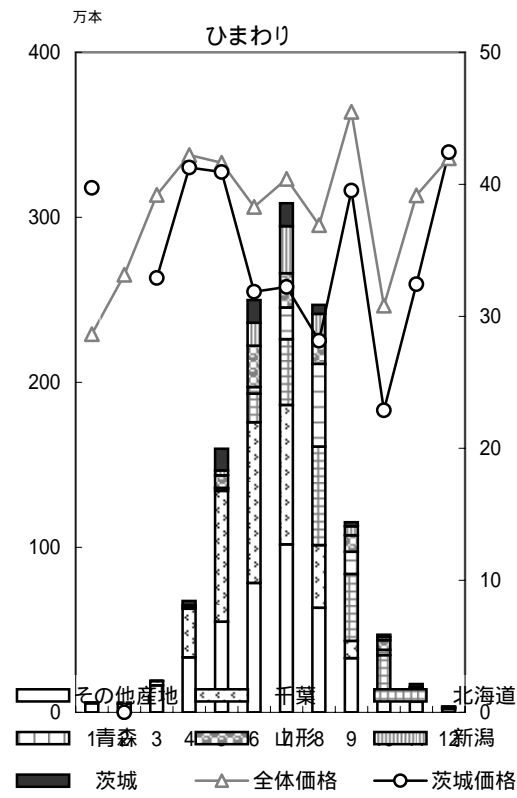
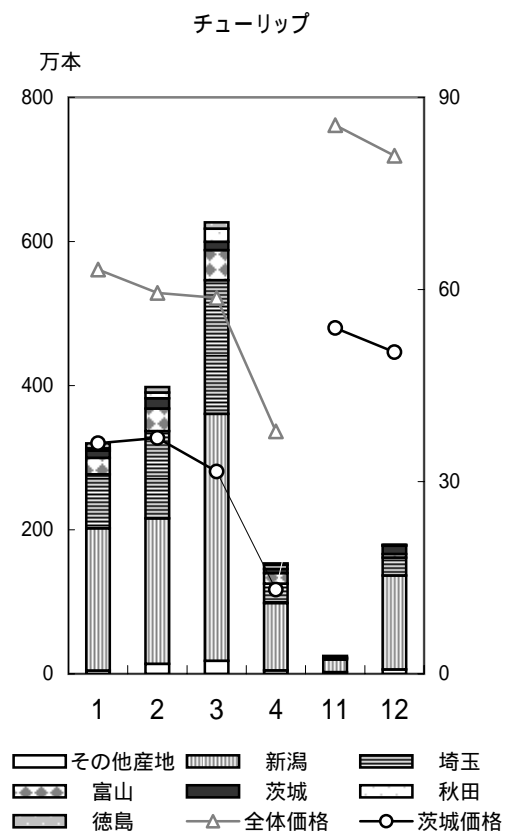
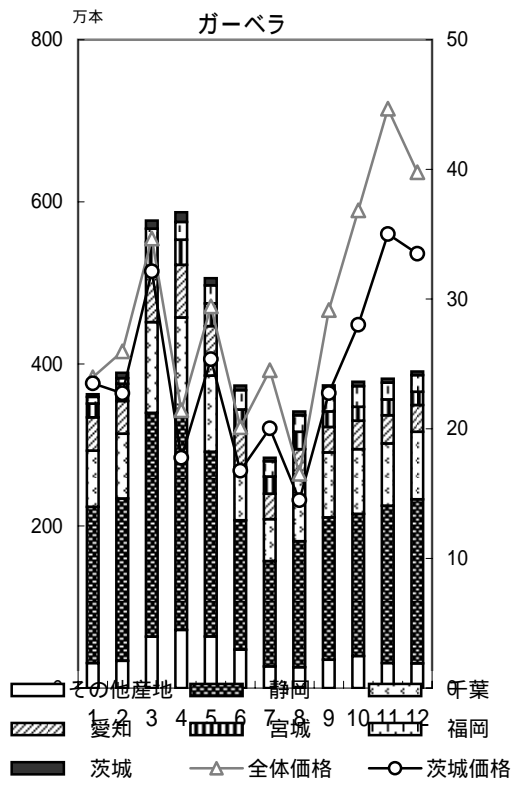


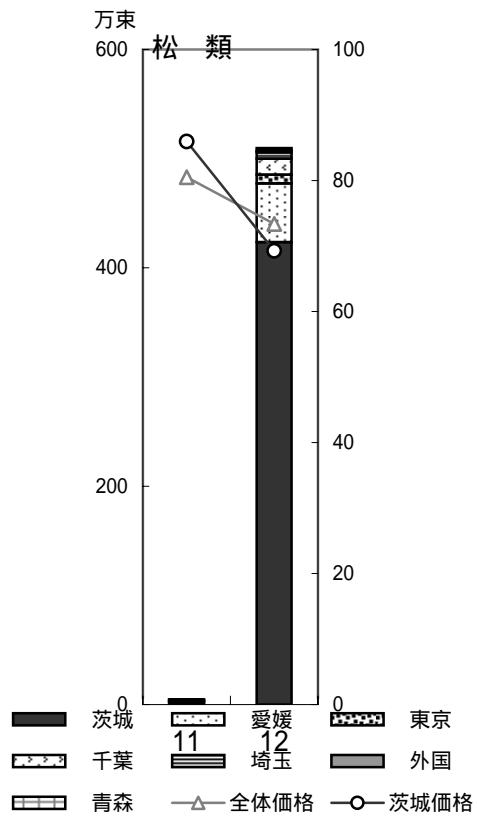
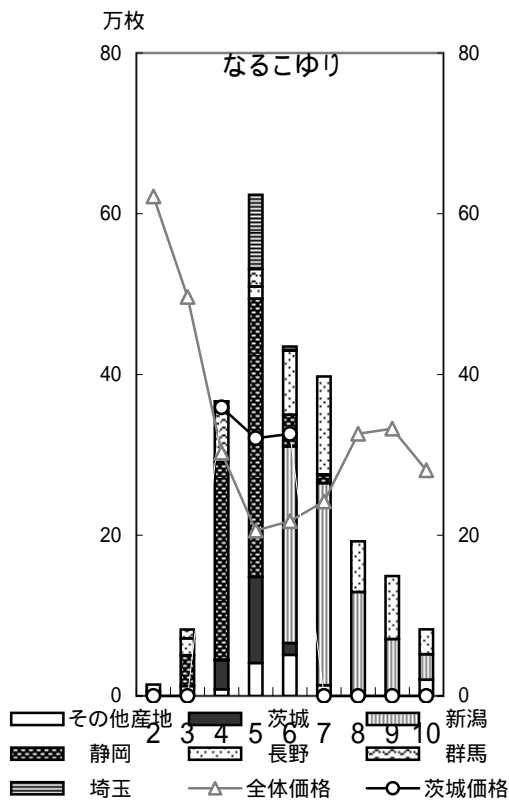
内の数字は都中央卸売市場の入荷数量順位(海外産地は外国産としてカウント)



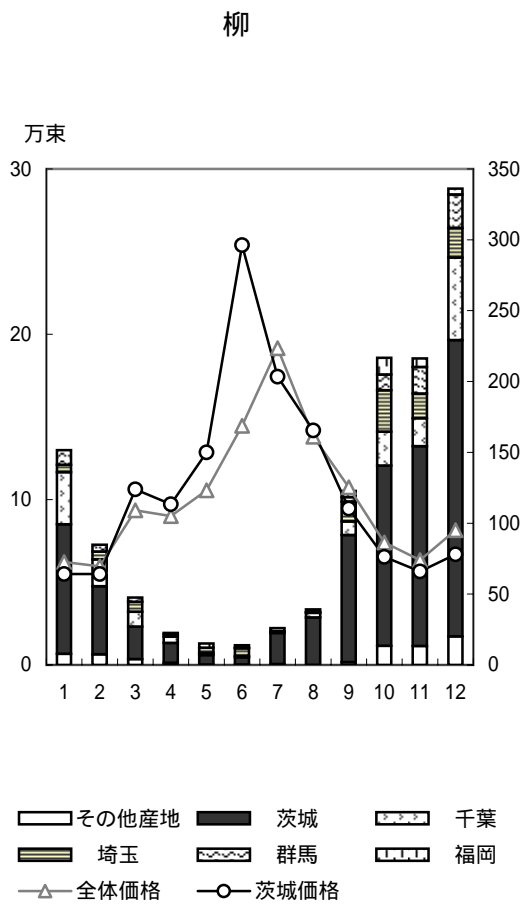
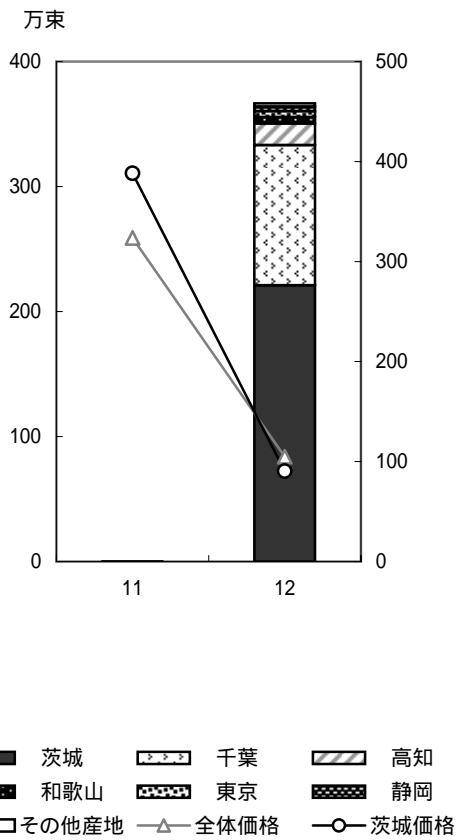


内の数字は都中央卸売市場の入荷数量順位(海外産地は外国産としてカウント)



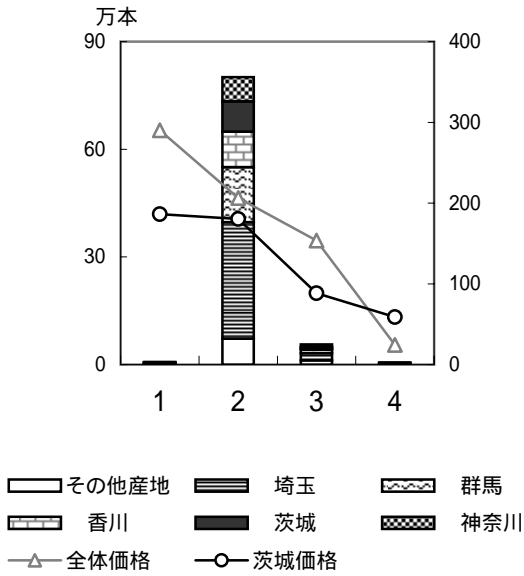


千両

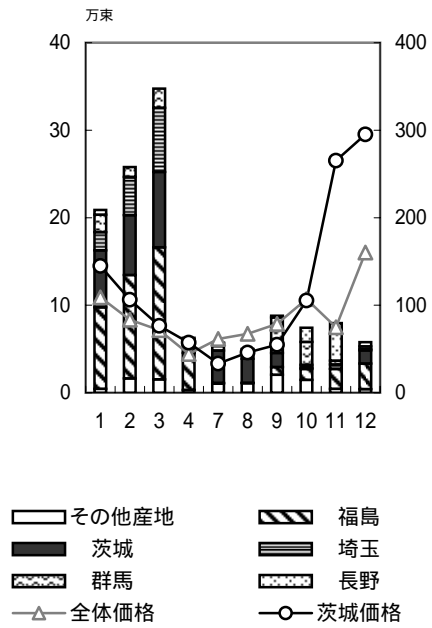


内の数字は都中央卸売市場の入荷数量順位(海外産地は外国産としてカウント)

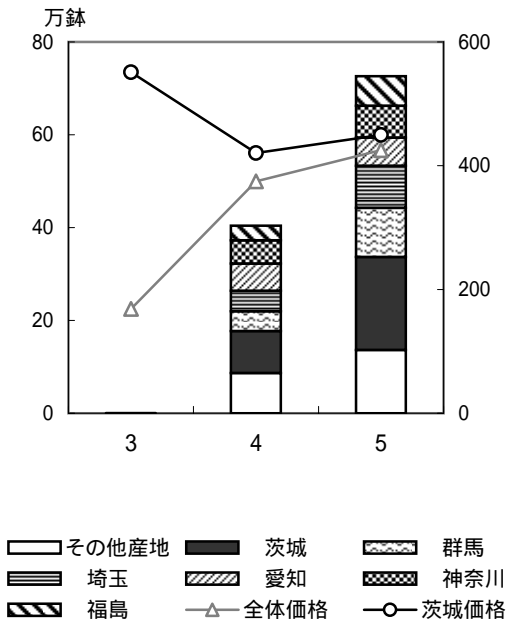
桃



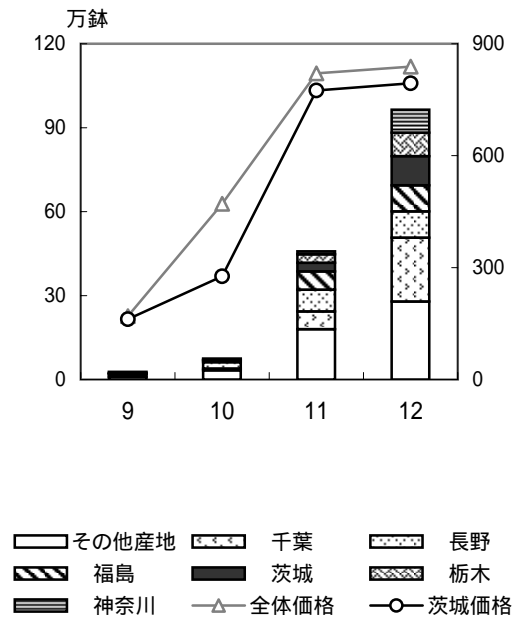
雪柳



鉢物カーネーション

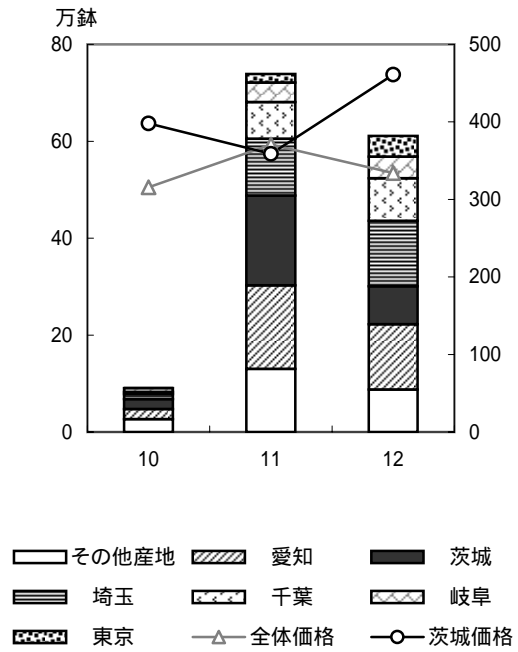
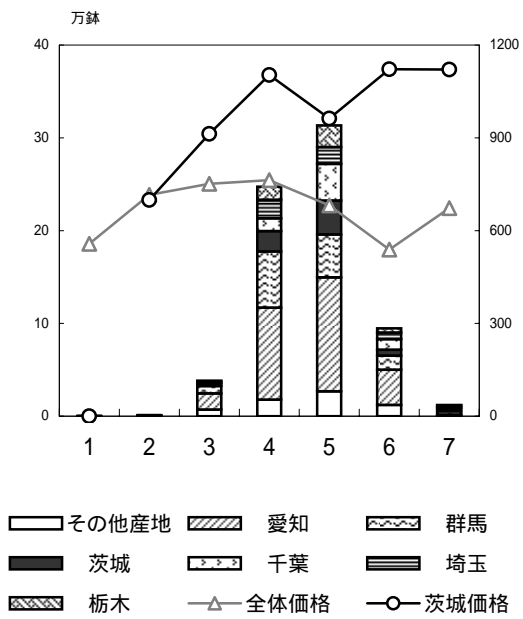


シクラメン

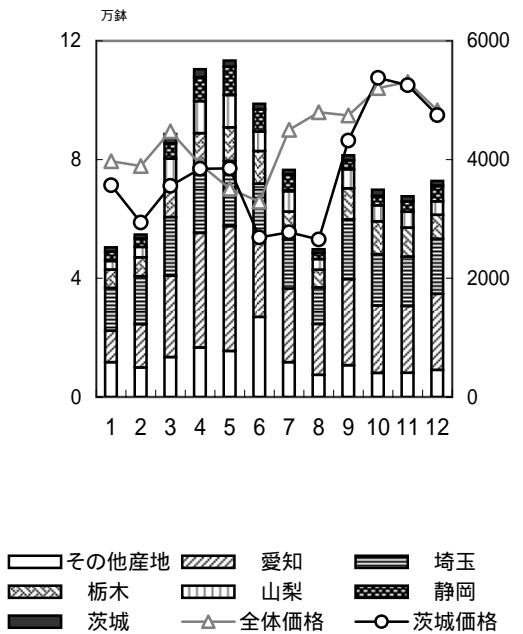


ポインセチア

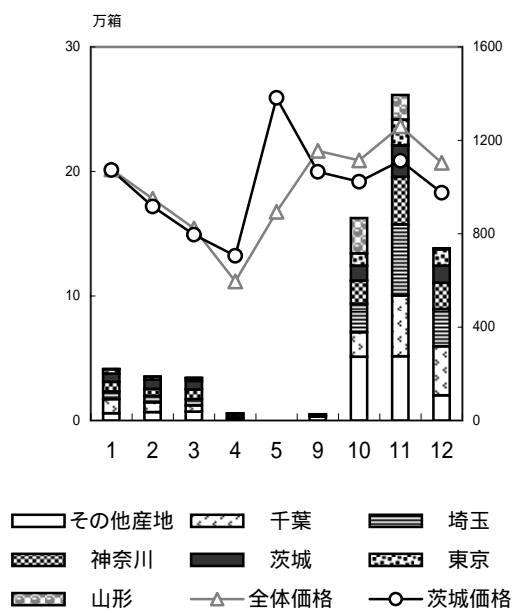
ハイドランジア



ファレノプシス



パンジー



内の数字は都中央卸売市場の入荷数量順位(海外産地は外国産としてカウント)